

GEL-2671 Version: 1



26-Port L2 Managed Gigabit Ethernet Switch, 4 x SFP/RJ45 Combo, 2 x SFP

The LevelOne GEL-2671 is a Layer 2 Managed switch with 24 x 1000Base-T ports associated with 4 x Gigabit SFP (Small Form Factor Pluggable) slots + 2 individual Gigabit SFP Slots.

Despite its affordable pricing, the GEL-2671 is equipped with advanced features such as Single IP Management which allows users to manage up to 32 switches under the same web interface, Easy Configuration Port (ECP), IGMP v1/v2/v3, IPv6, IEEE 802.1D/w/s Spanning Tree, IEEE 802.1X Access Control of up to 256 entries for easy network security, auto port aggregation, IEEE 802.1p QoS with 8 priority queues, IEEE 802.3az Green Ethernet and more.

An ideal network solution for workgroups and edge deployments, or anyone looking for an affordable and efficient way to expand their network.



1. LED Indicators
2. Reset Button
3. RS-232 Port

4. 10/100/1000Mbps RJ-45 Ports
5. 100/1000Base SFP Slots
6. Power Socket

Key Features

- 10/100/1000Mbps wire speed transmission and reception
- Easy Configuration Port (ECP) for easy deployment of network devices such as IP phone or network camera
- Single IP management supports up to 32 switches (GEL-1072/GTL-2880/GTP-2880/GTL-5280/GEP-2671/GEP-2672)
- IEEE 802.1p QoS with 8 priority queues
- Supports Access Control List (ACL) authentication of up to 256 entries and port-based security with IEEE802.1X
- Supports IPv4/IPv6 network operation
- IEEE 802.1d/w/s Spanning Tree Protocol (STP) and port mirroring
- IEEE 802.1Q VLAN allows network segmentation to enhance performance and security
- Supports Dual Firmware Image which protects against failed firmware upgrade



- Minimize carbon footprint with advanced energy efficient technology (IEEE 802.3az)
- IEEE 802.3ad LACP for auto port aggregation

Highlight

IP Clustered Stacking Solution

With the design and implementation of SIP (Single IP Management), network administrators are allowed to virtually stack up to 32 switches (GEL-1072/GTL-2880/GTP-2880/GTL-5280/GEP-2671/GEP-2672) together and manage them as one logical unit through a single IP address regardless of geographical locations of those switches. Comparing to traditional stacking, IP clustering eliminates the use of costly cables and connectors. Furthermore, it minimizes the impact of any single point of failure.

LevelOne Easy Configuration Port (ECP) Technology

Each switch port can now be fully optimized through a predefined role and settings which are based on the type of a device such as an IP camera or a VoIP phone to be connected to. For instance, even if a surveillance system integrator who lacks of IT administration skills, can still easily enables the role and applies settings like VLAN, QoS, port security and spanning tree to all connected IP cameras on a single Web UI within a few minutes. Hence, simplifying network deployment and ensuring consistent configurations across the network.

Specifications

System Specifications

Standards & Protocols:

IEEE 802.3 10-BASE-T, Ethernet
IEEE 802.3u 100-BASE-TX, Fast Ethernet
IEEE 802.3ab 1000BASE-T, Gigabit Ethernet
IEEE 802.1p Quality of Service (QoS)
IEEE 802.1X Port-based Network Access Control (PNAC)
IEEE 802.1Q Virtual LANs (VLANs)
IEEE 802.1D MAC Bridges
IEEE 802.1d Standard Spanning Tree Protocol
IEEE 802.1s Multiple Spanning Tree (MSTP)
IEEE 802.1w Rapid Spanning Tree Protocol (RSTP)
IEEE 802.3ad Link Aggregation Control Protocol (LACP)
IEEE 802.3az Energy-Efficient Ethernet
Link Layer Discovery Protocol (LLDP)
Universal Plug and Play (UPnP)

Buffer Memory:

512KB

Connectors and Cabling:

24 x RJ-45 10/100/1000BASE-T ports
6 x 100/1000Base-X SFP Slots (4 shared)

Button:

Reset Button

Indicator:

Power, Link/Active

Transmission Method:

Store-and-Forward

Power:

Power Consumption: < 22.8W
Power Input: 100-240V AC, 50-60 Hz, Internal Power Supply

Features

General:

Quality of Service (QoS):

8 hardware Priority Queues per port
Traffic classification based on IEEE 802.1p CoS
IPv4/IPv6 precedence/ type of service (ToS) / DSCP based
Rate Limiting - Ingress policer egress shaping and rate control

Spanning Tree:

Bridge Protocol Data Units (BPDU)

IEEE 802.1D MAC Bridges
IEEE 802.1d Spanning Tree Protocol (STP)
IEEE 802.1w Rapid Spanning Tree Protocol (RSTP)
IEEE 802.1s Multiple Spanning Tree Protocol (MSTP)

Virtual Local Area Network (VLAN):

802.1Q tag-based VLAN - up to 256 VLANs and 4096 VLAN IDs

Port-based VLAN

MAC-based VLAN

DHCP: DHCP Client; DHCP Relay (Layer 2)

IPv6:

IPv6 host mode; IPv6 stateless address auto-configuration; Duplicate Address Detection (DAD)
ICMP v6; IPv6 Neighbor Discovery (MLD)

IGMP:

IGMP v1/v2/v3 snooping; IGMP Queried; IGMP Proxy

IPv6 QoS Prioritize IPv6 packets in hardware

Port Mirroring:

Many-to-One TX/RX

Port Trunking:

IEEE 802.3ad LACP Trunk -Static Trunk up to 25 trunk groups

Security:

Storm Control:

Prevents traffic on a LAN from being disrupted by a broadcast, multicast, or unicast storm on a port

Authentication:

IEEE 802.1X Radius/Tacacs+ authentication

PVE:

L2 isolation between clients in the same VLAN

Access Control List (ACL):

Support for up to 256 entries

Dynamic VLAN assignment

Filtering:

Port-/MAC-/IP-based security

Management:

Diagnosis:

Event / Error Log / Syslog

Port:

Easy Configuration Port (ECP) - configure client's QoS and security capabilities

Single IP Management (SIM): Single IP management for a virtual stack function to switches
(GTL-2880/GTL-5280/GTP-2880/GTL-1072/GEP-2671/GEP-2672)

Network:

HTTPS/SSL; SSH v1/v2; sFlow; RMON (groups 1, 2, 3 and 9) Management ; SNMP v1, v2c, v3 User-based Security Model (USM); CLI via console port or Telnet; management VLAN; Private VLAN Edge (PVE)

Performance

Backplane (Gbps):

52Gbps



MAC Address Table:

8K

Data Transfer Rate:

10/100/1000Mbps

Packet Forwarding Rate:

1000Mbps port - 1,488,000pps

100Mbps port - 148,000pps

10Mbps port - 14,880pps

Jumbo Frame (K):

9K

Environment

Power Saving:

IEEE 802.3az Energy Efficient Ethernet:

- Automatically turns power off on RJ-45 port when detecting link down or Idle of client
- Cable length detection: Adjusts the signal strength based on the cable length
- Reduces the power consumption for cables shorter

Temperature (°C):

Operating: 0°C ~ 40°C

Storage: -20°C ~ 70°C

Humidity (Non-condensing):

Storage: 10% ~ 90%

Operating: 10 ~ 90%

Deployment:

19-inch rack-mountable

Physical Specifications

Dimensions (W x D x H mm):

442 x 170.3 x 44 mm

Weight (g):

3148g with box, 2354g without box

Reliability

MTBF:

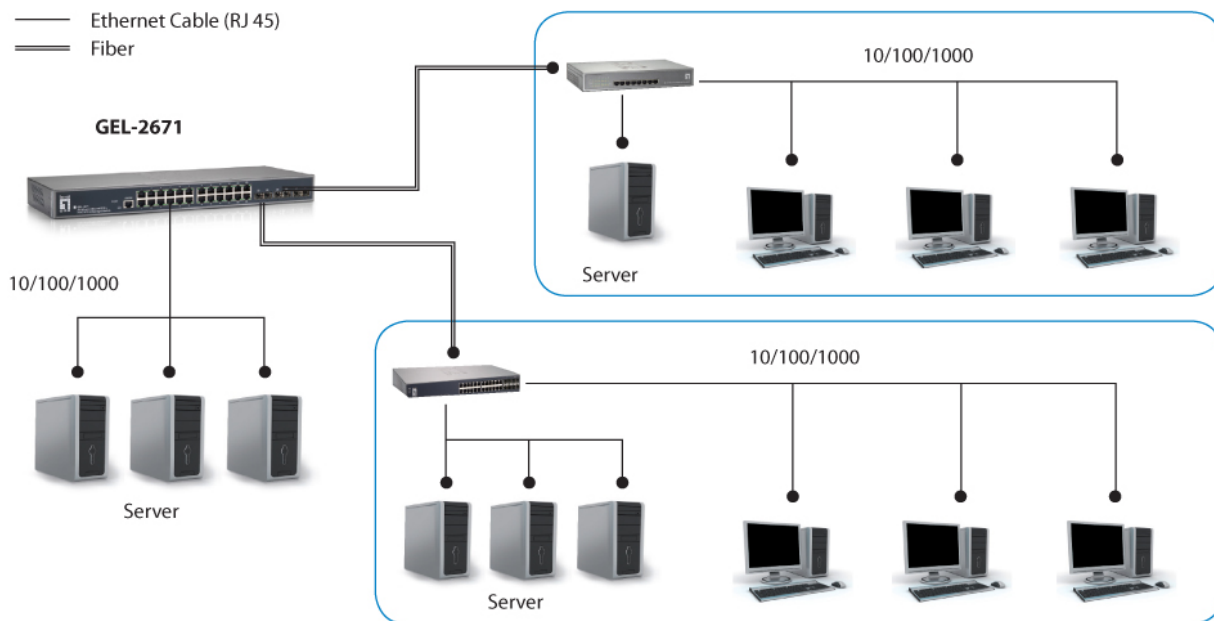
411,738

Others

Approval and Compliance:

FCC Part 15 Class A, CE, RoHS

Diagram



Order Information

GEL-2671

Package Contents

GEL-2671
Power Cord
19" Rackmount Kit
Rubber Feet
Quick Installation Guide
Resource CD (User Manual)

No liability or responsibility for any errors or omissions in the content.
Specifications are subject to change without notice.
All mentioned brand names are registered trademarks and property of their owners.
Copyright © Digital Data Communications GmbH, Germany. All Rights Reserved.