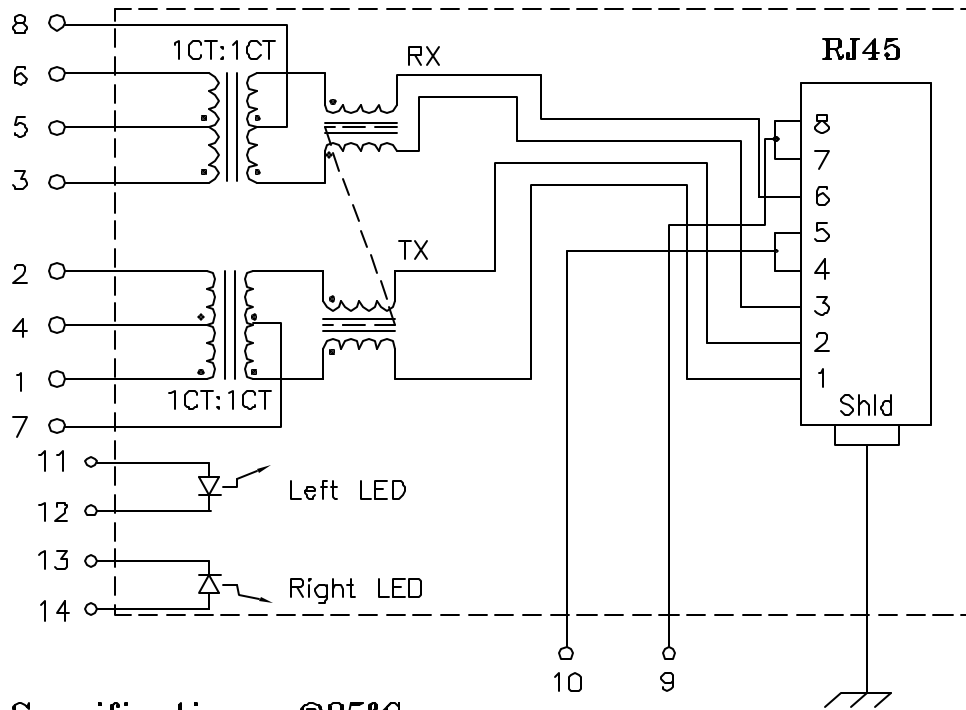


## Schematic:



## Electrical Specifications: @25°C

Isolation Voltage: 2000 Vdc (Input to Output)

Isolation Voltage: 500 Vrms (P1+2+4 to P3+6+7)

Isolation Voltage: 500 Vrms (J1+2, J3+6, J4+5 & J7+8, all combinations)

Isolation Voltage: 500 Vrms (P9 to P10)

Turns Ratio: TX 1CT:1CT ±3% RX 1CT:1CT ±3%

Q: 16 Min @100KHz 0.1V

Insertion Loss: 1.2dB Max @1-100 MHz

Return Loss: 1-30MHz 40MHz 50MHz 60-80MHz

16dB 14dB 13dB 12dB (Min)

Differential to Common Mode Rejection:

30MHz 60MHz 100MHz

50dB 43dB 35dB (Min)

Cross Talk: 30MHz 60MHz 100MHz

43dB 37dB 33dB (Min)

DC Current: 350mA through the xfmr center taps.

DC Current: 1.5A/pin, J4,5,7&8.

DC Current: Pins 10&9 3A Each

### Notes:

1. Solderability: Leads shall meet MIL-STD-202G, Method 208H for solderability.
2. Flammability: UL94V-0
3. ASTM oxygen index: > 28%
4. Insulation System: Class F 155°C, UL file E151558
5. Operating Temperature Range: All listed parameters are to be within tolerance from -40°C to +85°C
6. Storage Temperature Range: -55°C to +125°C
7. Aqueous wash compatible
8. Electrical and mechanical specifications 100% tested
9. RoHS Compliant Component

DOC REV: A/1

Complete the Combo P/N as follows:

Replace 'x' & 'u' in the part number with one of the LED color letters:

Y=Yellow  
G=Green  
A=Amber  
R=Red

'x' = Left LED Color  
'u' = Right LED Color

C=Green(1)/Amber(2) Bicolor

D=Amber(1)/Green(2) Bicolor

M=Green(1)/Yellow(2) Bicolor

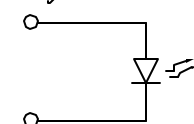
N=Yellow(1)/Green(2) Bicolor

P=Red(1)/Green(2) Bicolor

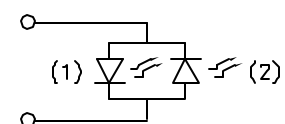
Q=Green(1)/Red(2) Bicolor

E=Red(1)/Yel(2) Bicolor

Single Color LED:



Bi-Color LED:



**PROPRIETARY:**

Document is the property of XFMRs Group & is not allowed to be duplicated without authorization.

**XFMRs Inc.**  
www.XFMRs.com

Title:

**DUAL PORT COMBO**

UNLESS OTHERWISE SPECIFIED

TOLERANCES:

.xxx ±0.010

Dimensions in Inch

SHEET 1 OF 2

P/N: XFVOIP5EA-CLxu2-4MS REV. A

DWN.

Xiany

Oct-28-09

CHK.

YK Liao

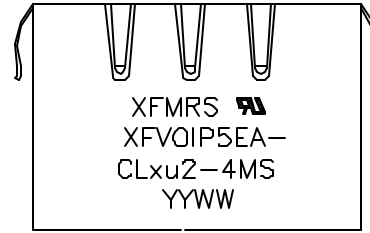
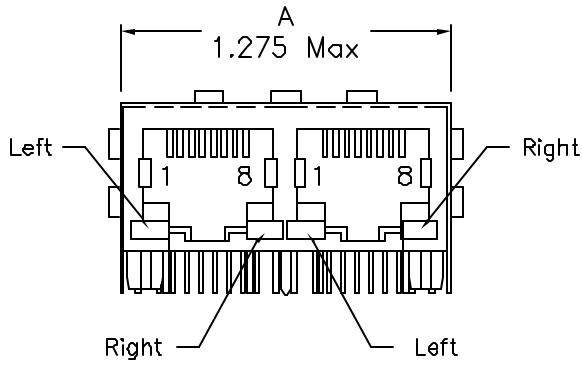
Oct-28-09

APP.

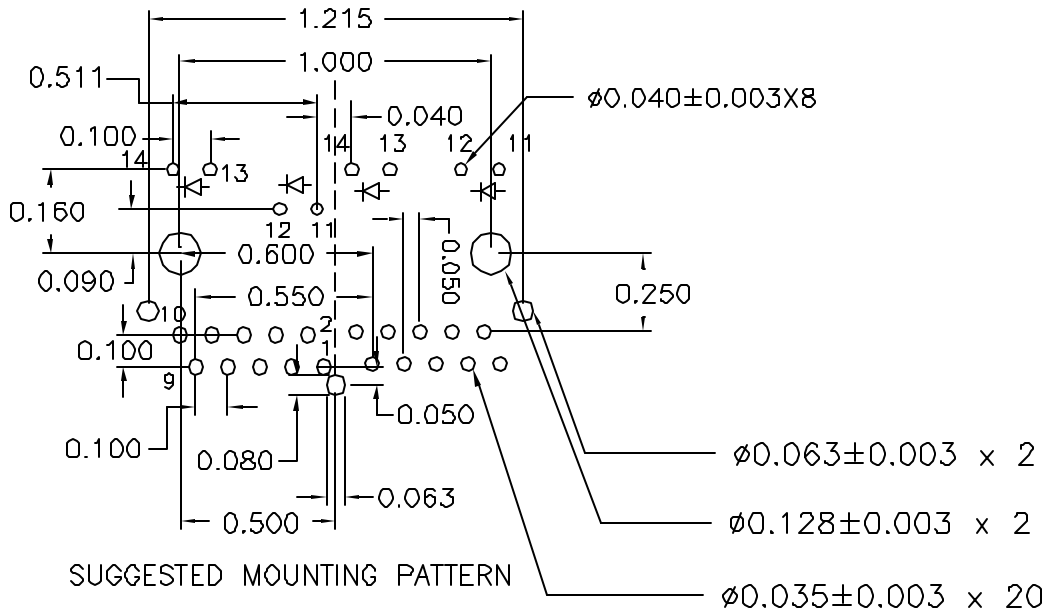
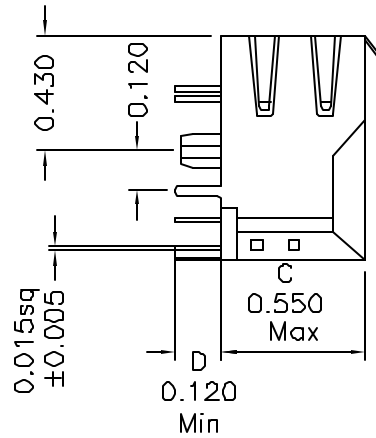
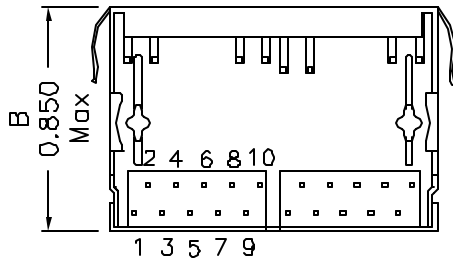
Joe Huff

Oct-28-09

**Mechanical Dimensions: (FOR CLxu2-4MS)**



TOP VIEW



<b>XFMR5 Inc</b> www.XFMR5.com	Title: Mechanical Dimensions For CLxu2-4MS Series		
	UNLESS OTHERWISE SPECIFIED TOLERANCES: .xxx ±0.010 Dimensions in Inch	P/N: XFVOIP5EA-CLxu2-4MS	REV. A
Doc. Rev: A/1		DWN. Xiany	Oct-28-09
		CHK. YK Liao	Oct-28-09
	SHEET 2 OF 2	APP. Joe Huff	Oct-28-09

**PROPRIETARY:**  
 Document is the property of XFMR5 Group & is not allowed to be duplicated without authorization.