

DATE

REVISIONS

REV

DRAWING NUMBER  
SSF-LXH340LYGID

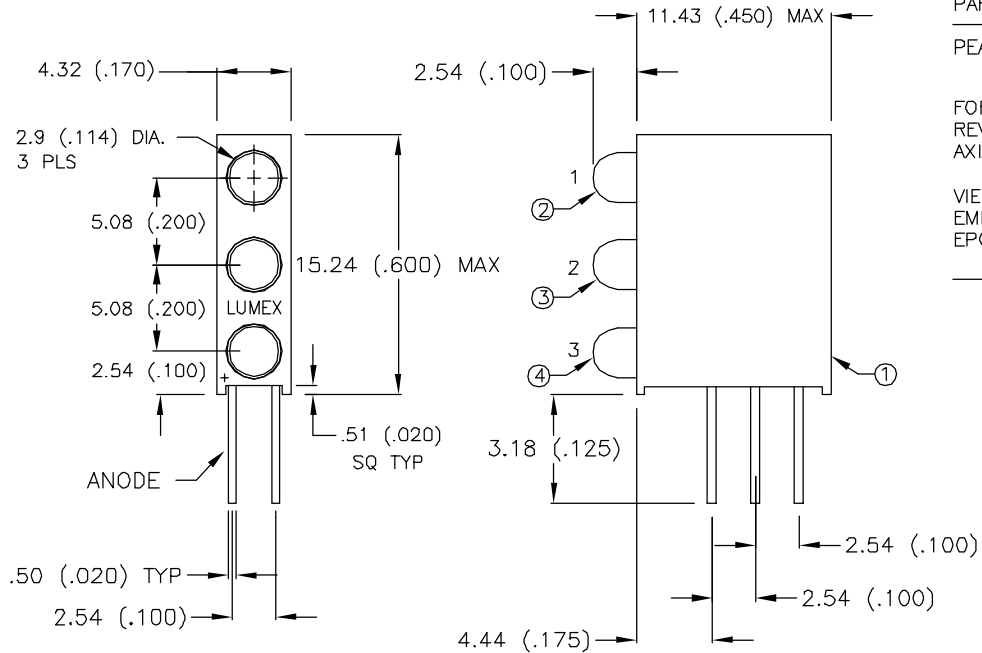
REV

ELECTRO-OPTICAL CHARACTERISTICS  $T_A=25^\circ\text{C}$   $I_f=20\text{mA}$ 

PARAMETER	MIN	TYP	MAX	UNITS	TEST COND
PEAK WAVELENGTH	POS.1	585 (YELLOW)		nm	
	POS.2	565 (GREEN)		nm	
	POS.3	635 (RED)		nm	
FORWARD VOLTAGE		2.1	2.8	$V_f$	
REVERSE VOLTAGE	5			$V_r$	$I_r=100\mu\text{A}$
AXIAL INTENSITY		20		mcd	$I_f=20\text{mA}$
VIEWING ANGLE	1.5			mcd	$I_f=2\text{mA}$
EMITTED COLOR		60		$2\times\text{theta}$	
EPOXY LENS FINISH		POS.1-YEL, POS.2-GRN, POS.3-RED			
		ALL COLORS DIFFUSED			

LIMITS OF SAFE OPERATION AT 25°C

PARAMETER	MAX	UNITS
PEAK FORWARD CURRENT*	150	mA
STEADY CURRENT (Y/G/R)	30/25/30	mA
POWER DISSIPATION	105	mW
DERATE FROM 25°C	-1.6	mW/°C
OPERATING, STORAGE TEMP	-40 TO +85	°C
LEAD SOLDERING TEMP	+260	°C
2.0mm FROM BODY		3 SEC. MAX

\*  $t < 10\mu\text{s}$ BILL OF MATERIALS:

- SSH-LXH340 HOLDER. MATERIAL: BLACK NYLON 94V-0.
- SSL-LX3044LYD LED.
- SSL-LX3044LGD LED.
- SSL-LX3044LID LED.

RELIABILITY NOTE

OUR MANY YEARS OF EXPERIENCE DATA ACCUMULATION INDICATE THAT SOLDER HEAT IS A MAJOR CAUSE OF EARLY AND FUTURE FAILURE. PLEASE PAY ATTENTION TO YOUR SOLDERING PROCESS.

**LUMEX**  
OPTO COMPONENTS INC.

290 E. HELLEN ROAD  
PALATINE, ILLINOIS 60067  
(847) 359-2790

CONFIDENTIAL INFORMATION  
THE INFORMATION CONTAINED IN THIS DOCUMENT IS THE PROPERTY OF LUMEX OPTO/COMPONENTS, INC. EXCEPT AS SPECIFICALLY AUTHORIZED IN WRITING BY LUMEX OPTO/COMPONENTS, INC., THE HOLDER OF THIS DOCUMENT SHALL KEEP ALL INFORMATION CONTAINED HEREIN CONFIDENTIAL AND SHALL PROTECT SAME IN WHOLE OR IN PART FROM DISCLOSURE AND DISSEMINATION TO ALL THIRD PARTIES.

DATE: 11-7-96	DWN:	CHK'D:	APPD:
SCALE: N/A			

T-3mm LED, RIGHT ANGLE FAULT INDICATOR,  
YELLOW/GREEN/RED DIFFUSED, SPECIAL LOW CURRENT SELECTION

PAGE 1 OF 1	DRAWING NUMBER SSF-LXH340LYGID	REV
-------------	-----------------------------------	-----