

7/16 Style Rugged Coaxial Connector

7/16 Series

DDK Ltd.

FEATURE

- 7/16 series is rugged 50 Ω coaxial connector.
- Screw coupling retains reliable connection.
- This connector is suitable for connection between the base station and antenna.



CONFORMING STANDARD

IEC 61169-4

SPECIFICATIONS

Characteristic Impedance	50 Ω
Rated Voltage	500VAC(r.m.s.)
Dielectric Withstanding Voltage	3000VAC(r.m.s.) for 1 minute
Insulation Resistance	10G Ω Min. at 1000V DC
Contact Resistance	Center Conductor 0.4m Ω Max. Outer Conductor 1.5m Ω Max.
V.S.W.R.	1.25 Max. at DC to 3GHz
Operating Temperature	-55 ~ +85°C

* The specifications are typical but may not apply to all connectors. Please check the specifications on each item with its drawing from us when you use.

MATERIAL/FINISH



Item	Material / Finish
Shell (Body)	Copper Alloy / Ag Plating
Contact (Male)	Copper Alloy / Ag Plating
Contact (Female)	Copper Alloy / Ag Plating
Insulator	PTFE
O -ring	Silicone Ruber

© Please acknowledge that the specification etc. of this catalog might change by the improvement etc. without notice. Moreover, the characteristic and the specification of the published product are the reference values. Please confirm the content with the latest delivery specifications when you use the product.

Characteristic Impedance

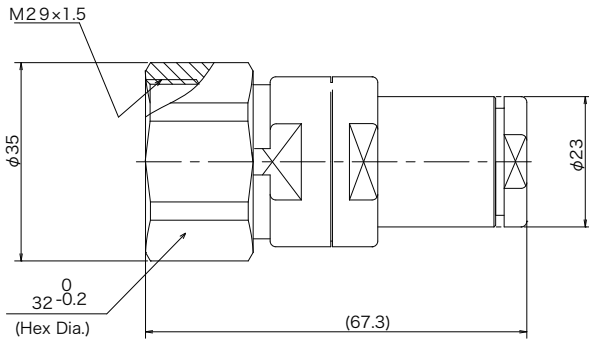
50 Ω

Lock Type

Screw

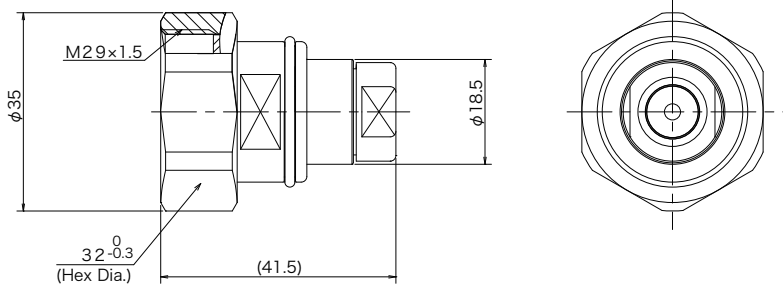
▶ Straight Cable Plug

7/16-SP-10DWFCH-CF



Part Number	Applicable Cable	Assembly Instruction
7/16-SP-10DWFCH-CF	FSJ4-50B	1

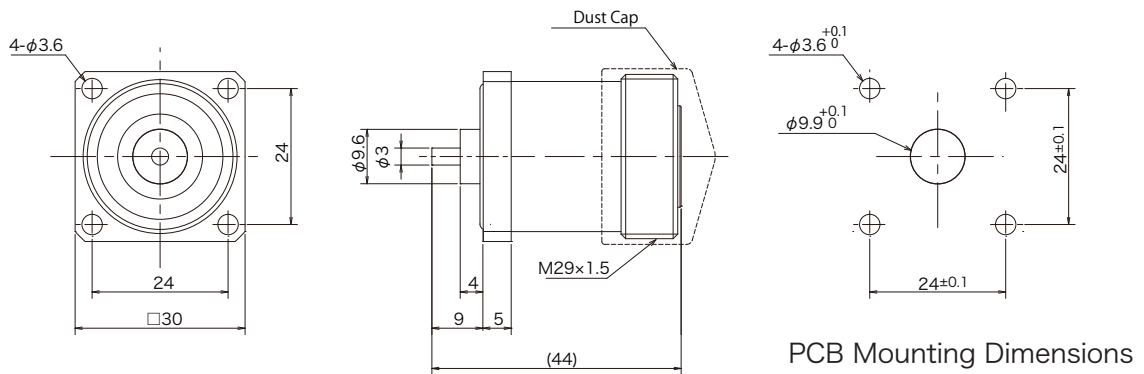
7/16-SP-8DWFCHT-CF



Part Number	Applicable Cable	Assembly Instruction
7/16-SP-8DWFCHT-CF	FSJ2-50	2

▶ Receptacle

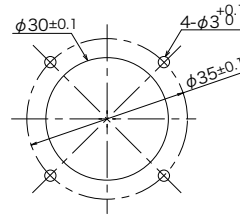
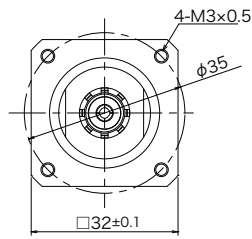
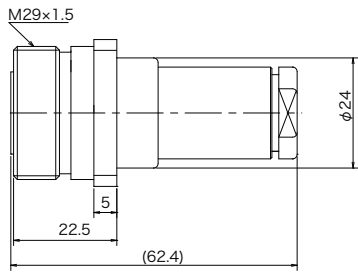
7/16-SR-22-D1



© Please acknowledge that the specification etc. of this catalog might change by the improvement etc. without notice.
 Moreover, the characteristic and the specification of the published product are the reference values.
 Please confirm the content with the latest delivery specifications when you use the product.

▶ Panel Jack

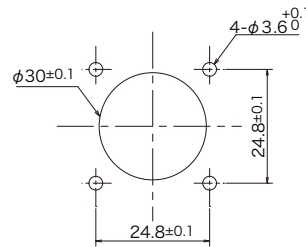
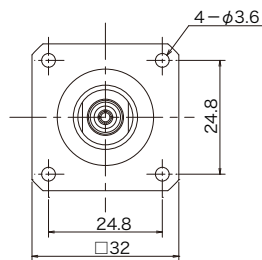
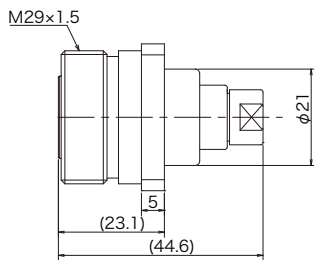
7/16-PJ-8DWFCH-CF



PCB Mounting Dimensions

Part Number	Applicable Cable	Assembly Instruction
7/16-PJ-8DWFCH-CF	FSJ2-50	3

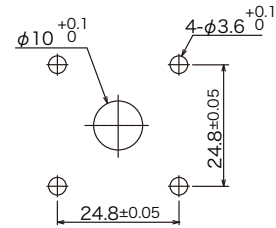
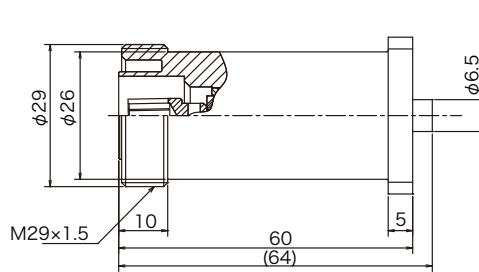
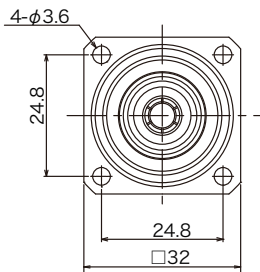
7/16-PJ-FSJ1-SO-3-CF



PCB Mounting Dimensions

Part Number	Applicable Cable	Assembly Instruction
7/16-PJ-FSJ1-SO-3-CF	FSJ1P-50A-1A	4

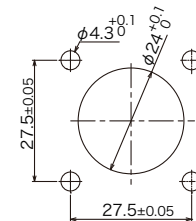
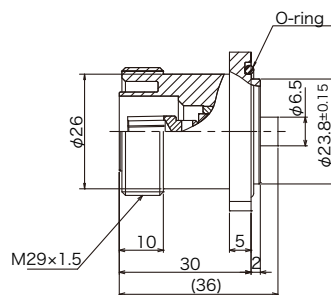
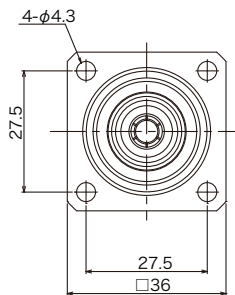
7/16-PJ-402-SO-3



PCB Mounting Dimensions

Part Number	Applicable Cable	Assembly Instruction
7/16-PJ-402-SO-3	Flexiform 402 FJ	—
	FCCAXBPO-4.6	

7/16-PJ-402-SO-4



PCB Mounting Dimensions

Part Number	Applicable Cable	Assembly Instruction
7/16-PJ-402-SO-4	Flexiform 402 FJ	5
	FCCAXBPO-4.6	

© Please acknowledge that the specification etc. of this catalog might change by the improvement etc. without notice.
 Moreover, the characteristic and the specification of the published product are the reference values.
 Please confirm the content with the latest delivery specifications when you use the product.