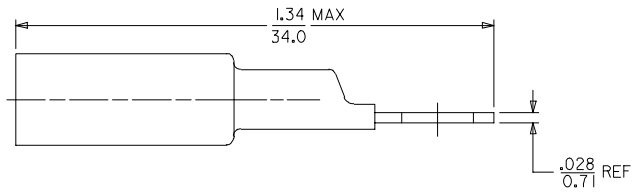
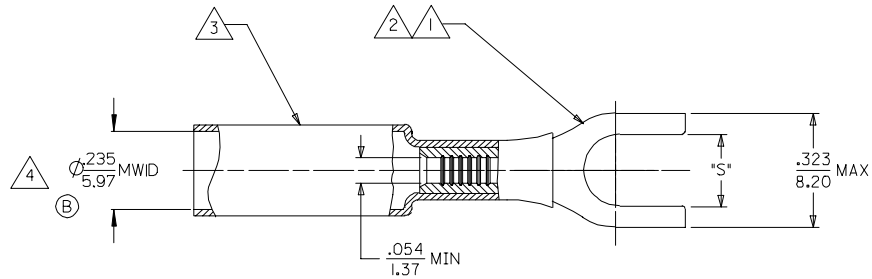


MATERIAL NUMBER	ENGINEERING NUMBER	STUD SIZE	SLOT 'S' ±0.10 ±0.25
191640006	SA-235-06	#6	Ø.146/3.71
191640007	SA-235-08	#8	Ø.173/4.39
191640008	SA-235-10	#10	Ø.198/5.03



NOTES:

- 1. TERMINAL MATERIAL: COPPER ALLOY
- 2. FINISH: ELECTRO TIN PLATE.
- 3. INSULATION MATERIAL: HEAT SHRINKABLE TUBING WITH HOTMELT ADHESIVE INNER LINER. COLOR: RED.
- 4. MWID = MAXIMUM WIRE INSULATION DIAMETER.

SALES DRAWING

CHANGED MWID EC NO: ETC2006-0154 DRAWN BY: ASAYDEH CHKD: JLOMASTRO APPR: JPAWLICK	2005/12/21 2005/12/21 2005/12/21	DESCRIPTION REVISIONS 1 2 3	QUALITY SYMBOLS	GENERAL TOLERANCES (UNLESS SPECIFIED)	DIMENSION STYLE	SCALE	DESIGN UNITS	THIRD ANGLE PROJECTION																		
			$\nabla=0$ $\nabla=0$	<table border="1"> <thead> <tr> <th></th> <th>mm</th> <th>INCH</th> </tr> </thead> <tbody> <tr> <td>4 PLACES</td> <td>± ---</td> <td>± ---</td> </tr> <tr> <td>3 PLACES</td> <td>± ---</td> <td>± ---</td> </tr> <tr> <td>2 PLACES</td> <td>± ---</td> <td>± ---</td> </tr> <tr> <td>1 PLACE</td> <td>± ---</td> <td>± ---</td> </tr> <tr> <td colspan="3">ANGULAR ± --- °</td> </tr> </tbody> </table>		mm	INCH	4 PLACES	± ---	± ---	3 PLACES	± ---	± ---	2 PLACES	± ---	± ---	1 PLACE	± ---	± ---	ANGULAR ± --- °			IN/MM	---	INCH	
				mm	INCH																					
			4 PLACES	± ---	± ---																					
3 PLACES	± ---	± ---																								
2 PLACES	± ---	± ---																								
1 PLACE	± ---	± ---																								
ANGULAR ± --- °																										
DRAFT WHERE APPLICABLE MUST REMAIN WITHIN DIMENSIONS	DRAWN BY: ASAYDEH DATE: 05/12/13 CHECKED BY: JLOMASTRO DATE: 05/12/13 APPROVED BY: RDEROSS DATE: 05/12/13	MATERIAL NO. SEE CHART SIZE: C	TITLE SPADE TERMINAL NIAC 22-18 AWG MOLEX INCORPORATED	DOCUMENT NO. SD-19164-025	SHEET NO. 1 OF 1																					