

SAW Filter 1207.0MHz

Model: TA1521A

Part No: MP05258

Rev No: 1

A. MAXIMUM RATING:

Electrostatic Sensitive Device (ESD)

1. Input Power Level: 10dBm
2. DC Voltage: 3V
3. Operating Temperature: -40°C to +85°C
4. Storage Temperature: -50°C to +95°C

B. ELECTRICAL CHARACTERISTICS:

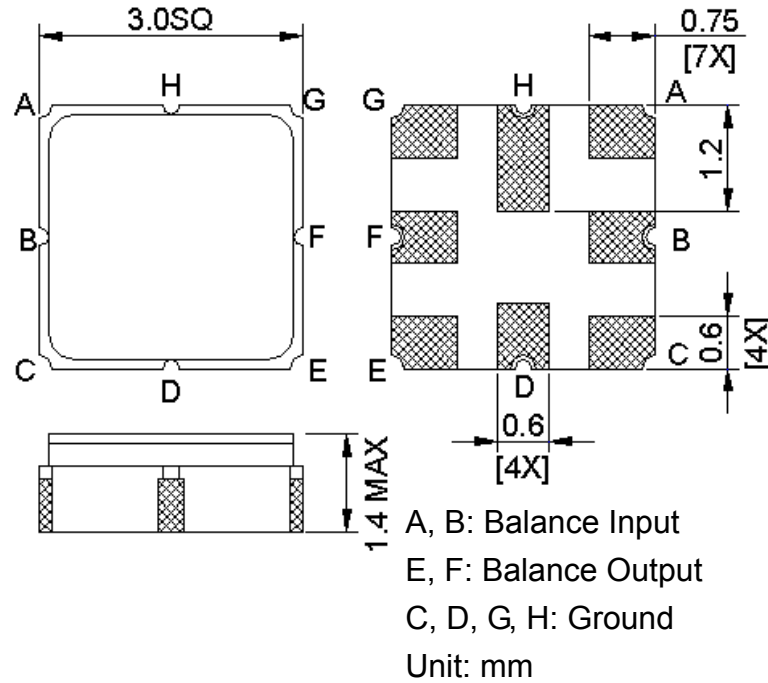
1. Terminating source impedance (differential): $Z_S = 200\Omega // 33nH$
2. Terminating load impedance (differential): $Z_L = 200\Omega // 33nH$

Item	Unit	Min.	Typ.	Max.	Note
Center Frequency Fc	MHz	-	1207	-	-
Bandwidth at -3dB	MHz	-	46	-	-
Insertion Loss in 1197 ~ 1217MHz	dB	-	2.4	4	-
Amplitude ripple (1197 ~ 1217MHz)	dB	-	0.65	2	-
Group delay variation (1197 ~ 1217MHz)	ns	-	12	25	-
I/O Return Loss (1197 ~ 1217MHz)	dB	8	10	-	-
Attenuation (reference level from 0dB)					
10 ~ 910MHz	dB	43	50	-	-
1360 ~ 2000MHz	dB	43	55	-	-
2000 ~ 2400MHz	dB	38	64	-	-
Temperature Coefficient of Frequency	ppm/°C	-	-36	-	-

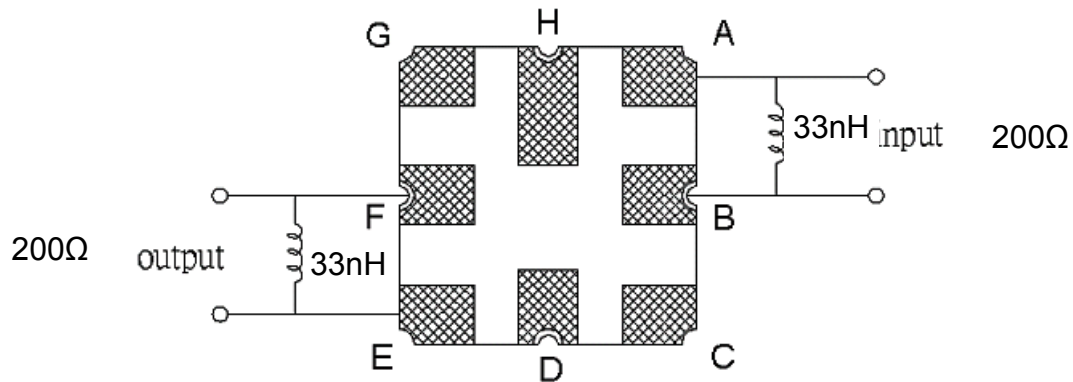
SAW Filter 1207.0MHz
Part No: MP05258

Model: TA1521A
Rev No: 1

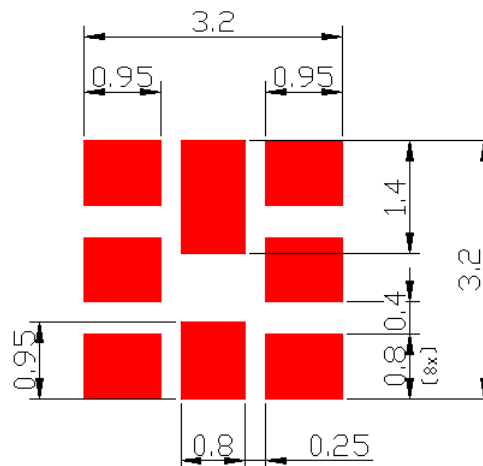
C. OUTLINE DRAWING:



D. MEASUREMENT CIRCUIT:



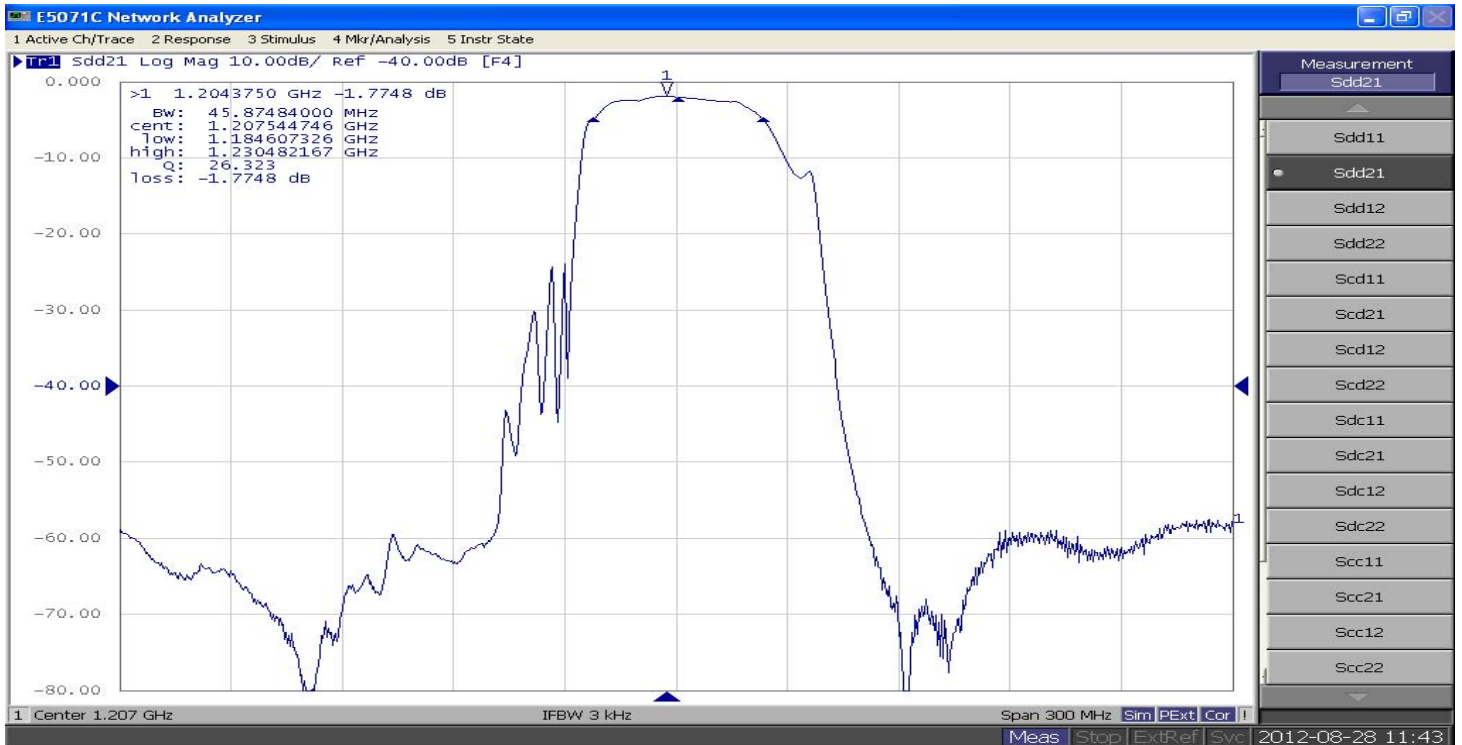
E. PCB FOOTPRINT:



SAW Filter 1207.0MHz
Part No: MP05258

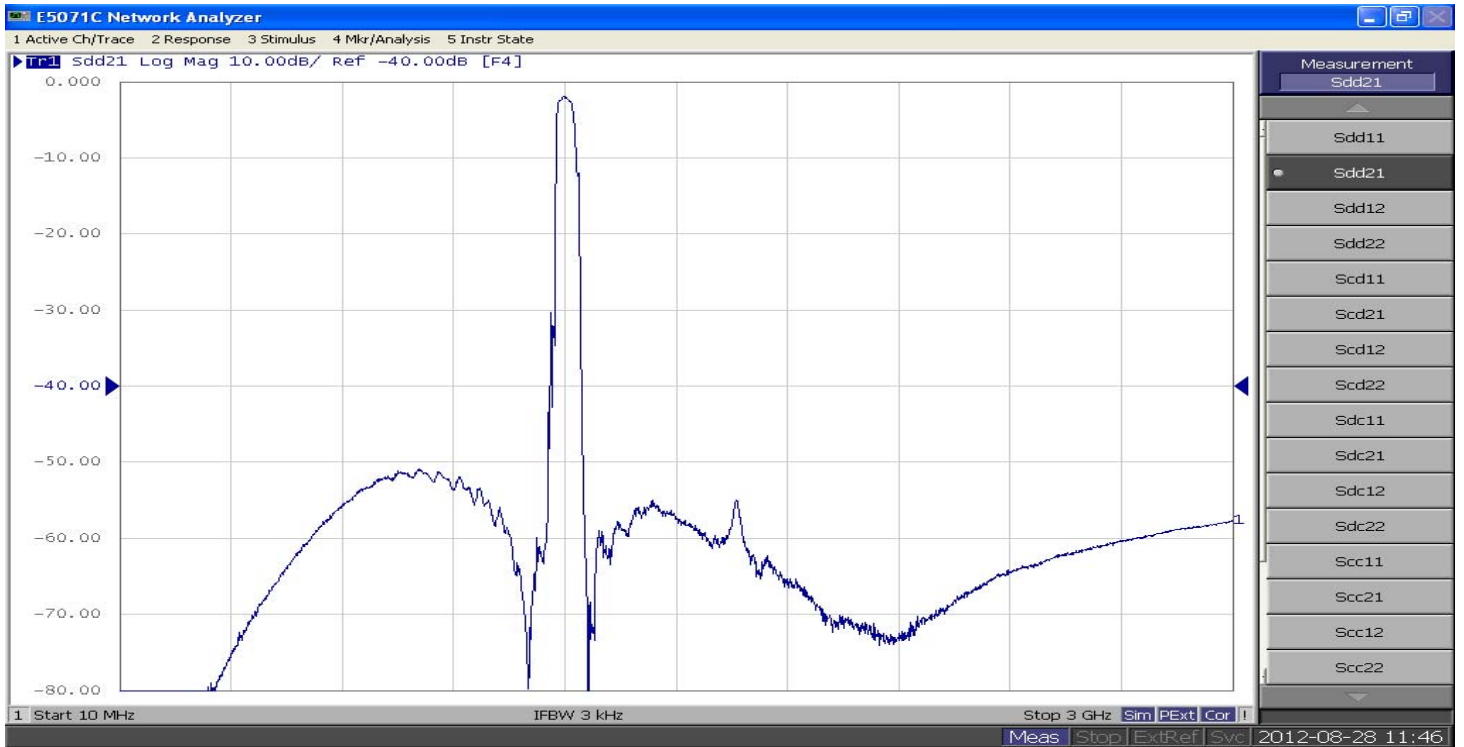
Model: TA1521A
Rev No: 1

F. FREQUENCY CHARACTERISTICS:



SAW Filter 1207.0MHz
Part No: MP05258

Model: TA1521A
Rev No: 1

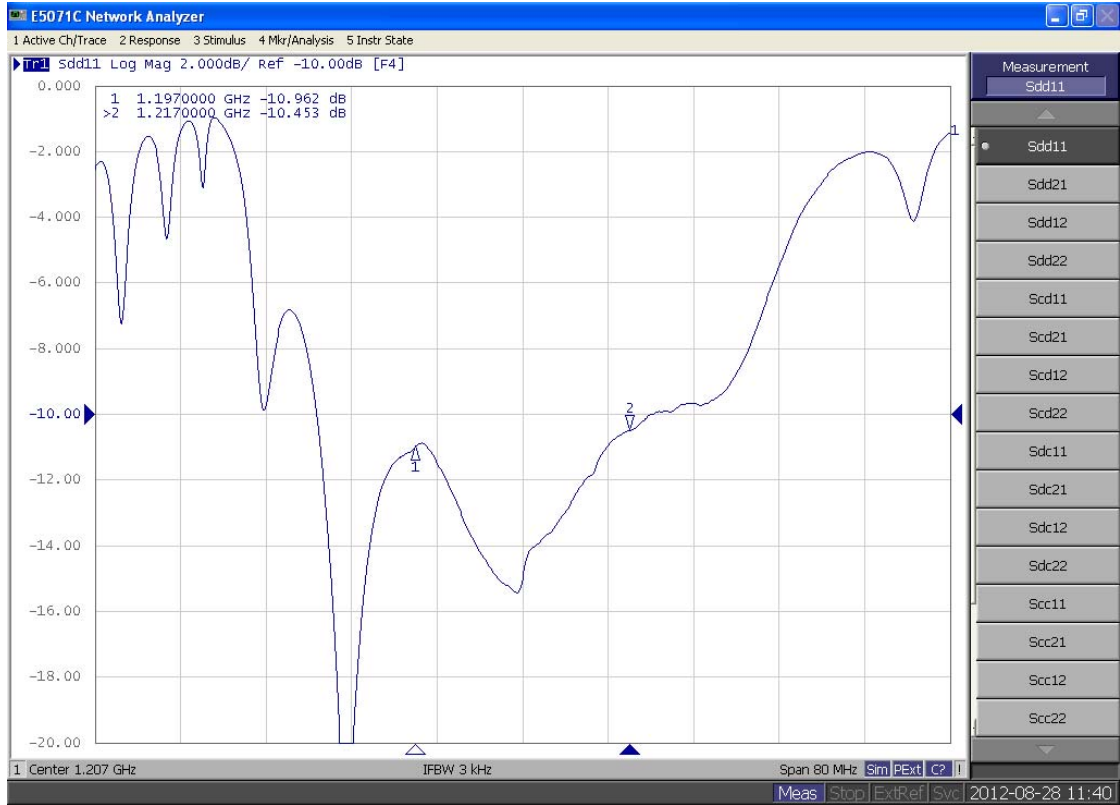


SAW Filter 1207.0MHz
Part No: MP05258

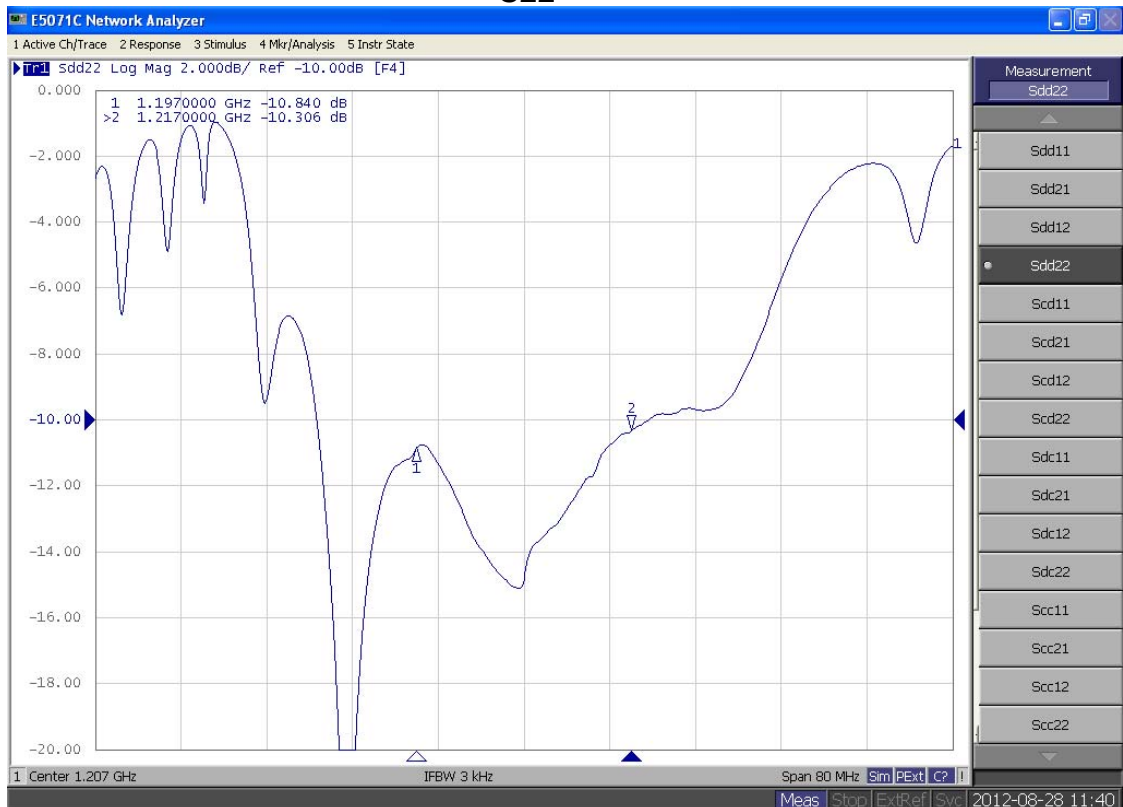
Model: TA1521A
Rev No: 1

Reflection Functions

S11



S22



SAW Filter 1207.0MHz
Part No: MP05258

Model: TA1521A
Rev No: 1

H. RECOMMENDED REFLOW PROFILE:

1. Preheating shall be fixed at 150 ~ 180°C for 60 ~ 90 seconds.
2. Ascending time to preheating temperature 150°C shall be 30 seconds min.
3. Heating shall be fixed at 220°C for 50 ~ 80 seconds and at 245 ~ 260°C peak (min. 10sec).
4. Time: 2 times.

