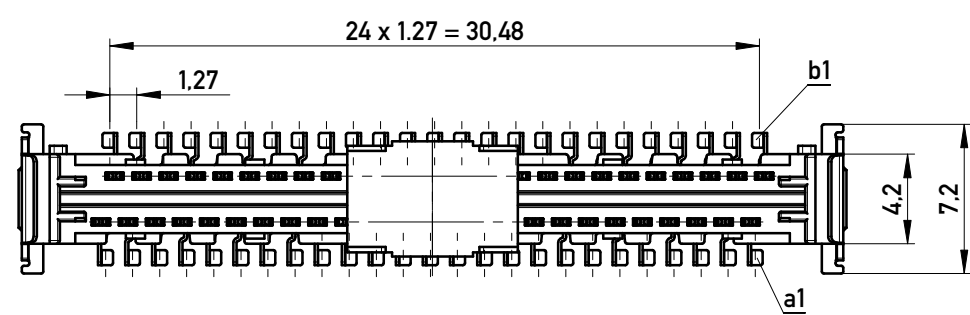
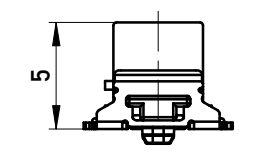
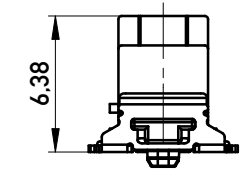


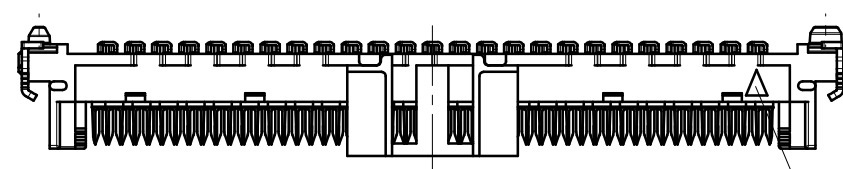
Drahtführung vorverrastet  
wire guide loose mounted

Drahtführung verpresst  
wire guide pressed on

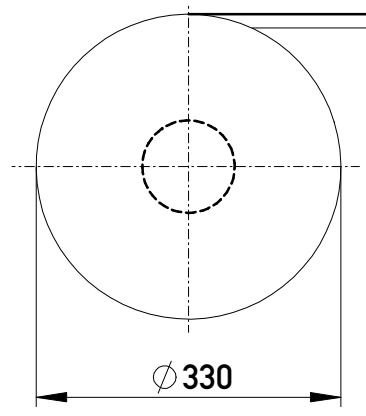


Verpackt im Gurt in Anlehnung an DIN IEC 60286-3  
Tape on Reel Packaging according to DIN IEC 60286-3  
Verpackungseinheit: 600 Stück  
Packaging unit: 600 pcs

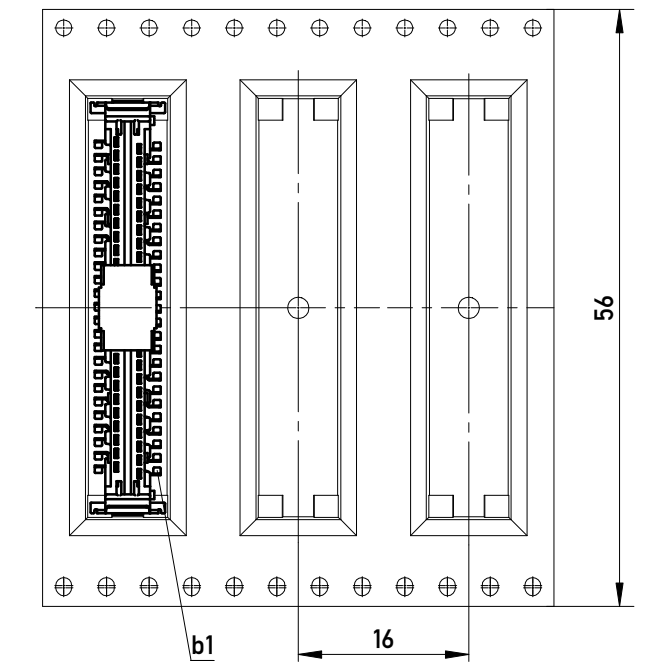
Drahtführungen nicht im Lieferumfang enthalten!  
wire guides are not included in delivery!  
Ident.Nr. für Drahtführungen (für 600 Teile): 244633  
part no. for wire guides (for 600 parts): 244633



Kontaktbezeichnung bei b1  
contact marking at b1

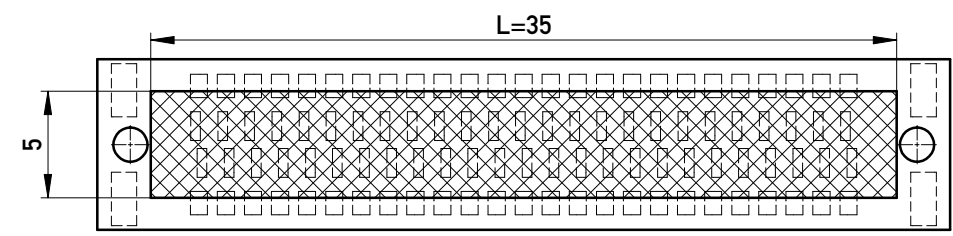


Abspulrichtung - Reel off Direction

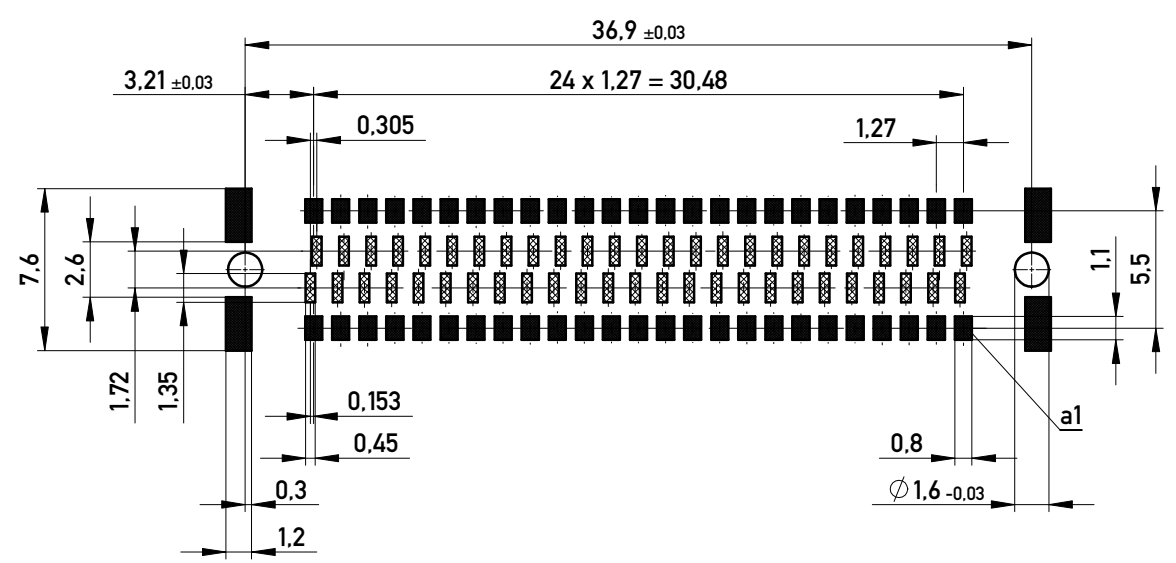


Leiterplatten-Layout Vorschlag für SMT  
PCB-Layout Proposal for SMT

Leiterplatten-Layout Rückseite  
PCB-Layout Back Side



Freifläche Lx5mm auf der Leiterplatten-Unterseite  
für das Einpresswerkzeug. Keine Bauteile platzieren in diesem Bereich.  
PCB back side space Lx5mm for press tool.  
Do not place any parts in this space.



Sperrfläche  
Restricted area

Information:	Tolerances	Scale 3:1	Designation <b>1,27 DRC board on IDC 50-polig 50-contacts</b>
	All rights reserved. Only for Information. To ensure that this is the latest version of this drawing, please contact one of the ERNI companies before using.		
c Index	02.08.2016 Date	www.ERNI.com	101800850003
			K A3

Copyright by ERNI Production GmbH & Co. KG  
Proprietary notice pursuant to ISO 16016 to be observed.