



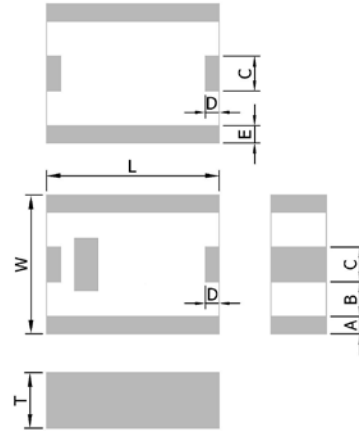
PRODUCT FEATURES

1. Surface mount band pass filter with a small size of 2.5 X 2.0 X 0.7 mm, RoHS compliant.
2. Provide low insertion loss and high rejection rate.
3. Highly stable under temperature and humidity changes.

RF CHARACTERISTICS

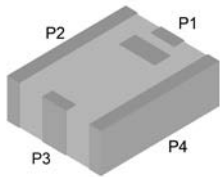
P/N BP2500A1008AT	Specification
Frequency range	2400 - 2500 MHz
Insertion Loss (max)	2.0 dB at 25°C 2.2dB at -40°C and +85°C
VSWR	2.0 max
Impedance	50 Ω
Attenuation (min.)	45dB @ 824 - 849MHz 45dB @ 869 - 880MHz 45dB @ 925 - 960MHz 45dB @ 1570 - 1580MHz 45dB @ 1710 - 1785MHz 40dB @ 1805 - 1850MHz 35dB @ 1850 - 1910MHz 35dB @ 1920 - 1990MHz 25dB @ 2110 - 2170MHz 5 dB @ 2750 - 3000MHz 15 dB @ 3000 - 4800 MHz 30 dB @ 4800 - 5000 MHz 30 dB @ 5150 - 5850MHz 20 dB @ 7200 - 7500 MHz
Operating temperature range	-40°C to +85°C

PHYSICAL DIMENSIONS



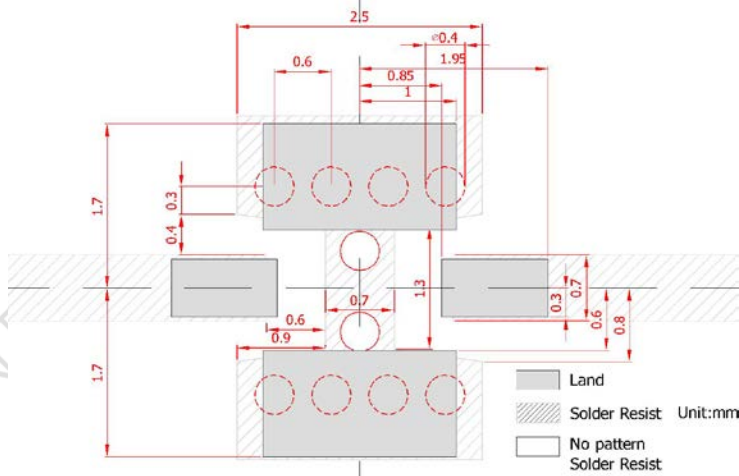
Symbol	Dimension (mm)
L	2.50 ± 0.20
W	2.00 ± 0.20
T	0.70 ± 0.10
A, E	0.20 ± 0.20
B	0.55 ± 0.20
C	0.50 ± 0.20
D	0.20 ± 0.20

TERMINAL CONFIGURATION



PIN	Definition
P1	Input
P2	GND
P3	Output
P4	GND

PCB DESIGN/LAYOUT CONSIDERATION



Note:

- Unit in mm
- Design trace width to be 50Ω impedance.

Typical RF Performance

