

Customer Information Sheet

DRAWING No.: S01-XXXXXX0

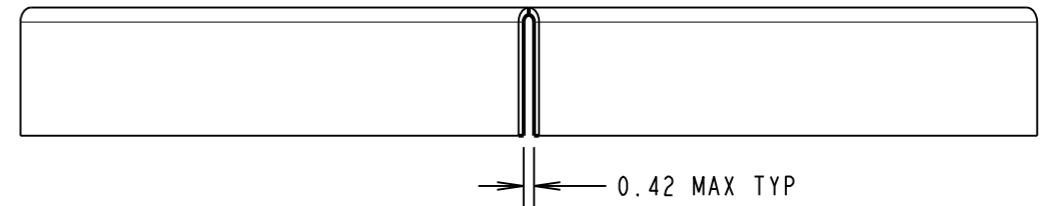
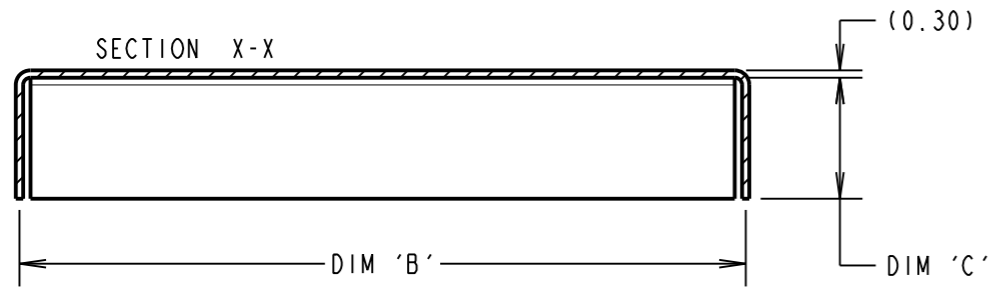
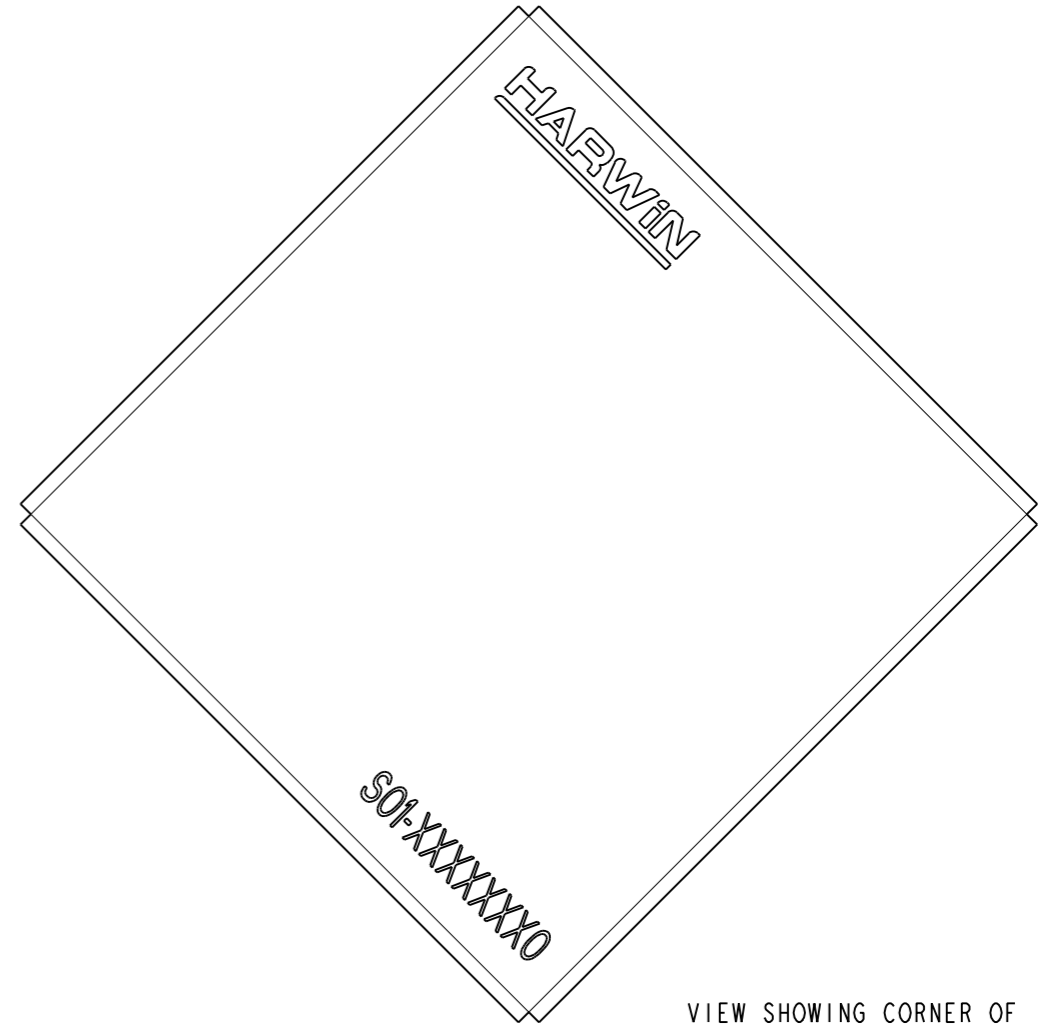
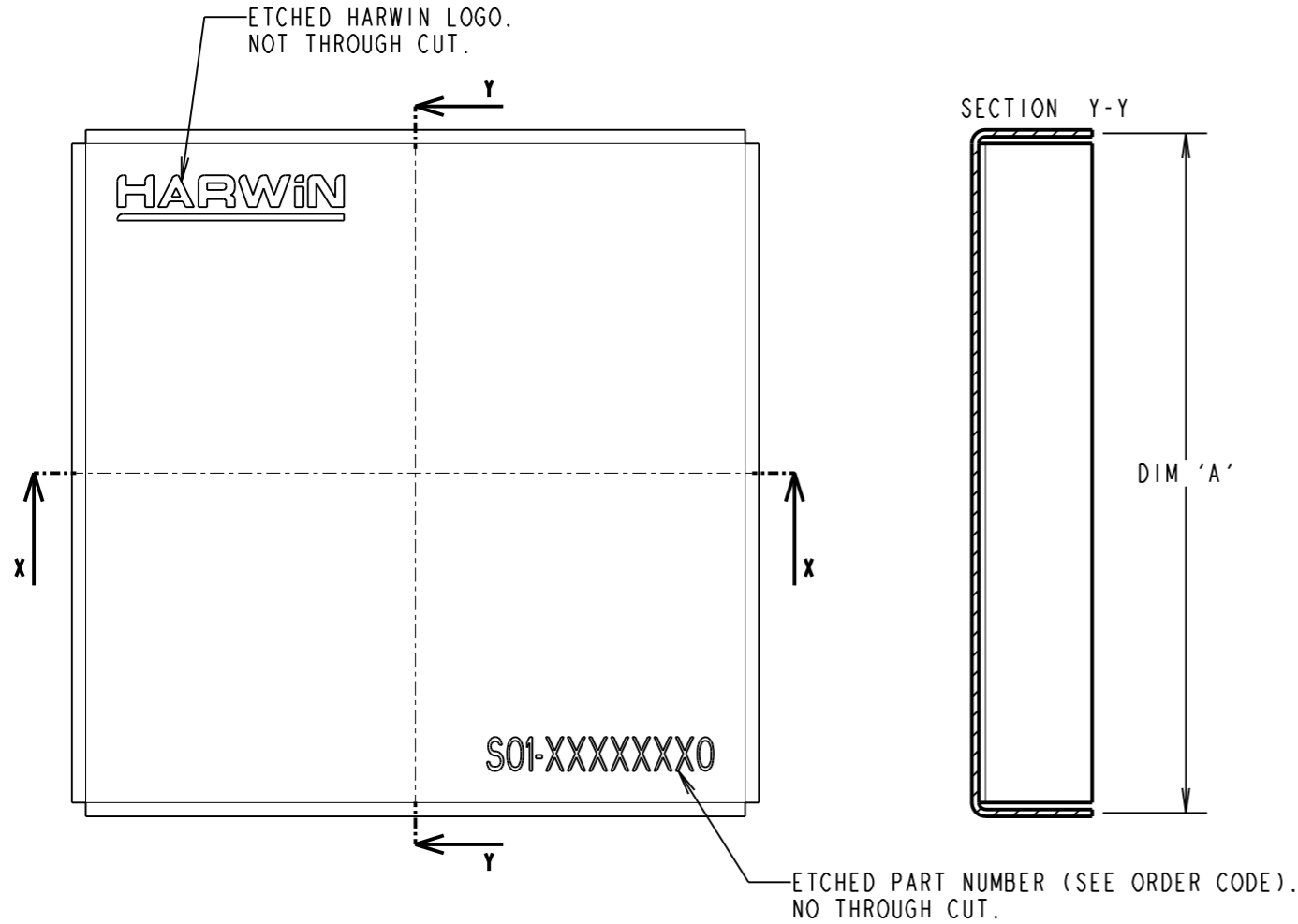
IF IN DOUBT - ASK

Ⓢ

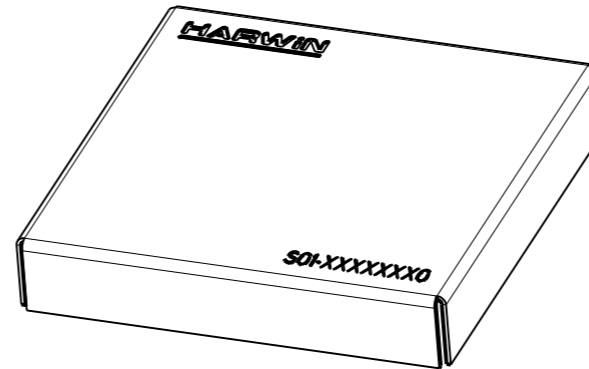
NOT TO SCALE

THIRD ANGLE PROJECTION

ALL DIMENSIONS IN mm



- NOTES:
- DIM 'C', HEIGHT OF THE CAN IS FROM THE BOTTOM EDGE TO THE INSIDE OF THE TOP FACE.
 - BOTH DIM 'A' AND 'B' ARE FROM THE CENTRE OF THE MATERIAL THICKNESS.
 - CANS ARE PACKED INDIVIDUALLY IN POLY BAGS.
 - SHIELD CAN IS RECOMMENDED FOR USE WITH RFI SHIELD CLIPS: S1711-XXR AND S2711-XXR.



ORDER CODE:

S01-XXXXXX0

SIZE:

DIM 'A' = LENGTH
 DIM 'B' = WIDTH
 DIM 'C' = HEIGHT

FINISH:

0 = UNPLATED FINISH

SB	5	14.08.14	12552
NAME	ISS.	DATE	C/NOTE
APPROVED:		S.BENNETT	
CHECKED:		S.FLOWER	
DRAWN:		S.BENNETT	
CUSTOMER REF.:			
ASSEMBLY DRG:			

PART No.	DIM 'A'	DIM 'B'	DIM 'C'
S01-30200500	30.0mm	20.0mm	5.0mm
S01-30300500	30.0mm	30.0mm	5.0mm
S01-50250500	50.0mm	25.0mm	5.0mm

HARWIN

www.harwin.com
 technical@harwin.com

THIS DRAWING AND ANY INFORMATION OR DESCRIPTIVE MATTER SET OUT HEREON ARE CONFIDENTIAL AND COPYRIGHT PROPERTY OF THE HARWIN GROUP AND MUST NOT BE DISCLOSED, LOANED, COPIED OR USED FOR MANUFACTURING, TENDERING OR FOR ANY OTHER PURPOSE WITHOUT THEIR WRITTEN PERMISSION.

TOLERANCES

X. = ±1mm
 X.X = ±0.25mm
 X.XX = ±0.10mm
 X.XXX = ±0.01mm
 ANGLES = ±5°
 UNLESS STATED

MATERIAL:

NICKEL SILVER, HALF HARD NS106, TO BS1653 0.30mm THICK

FINISH:

SEE ABOVE

S/AREA:

mm²

TITLE:

EZ SHIELD CAN

DRAWING NUMBER:

S01-XXXXXX0

SHT
 2 OF 2