

SURFACE MOUNT SCHOTTKY BARRIER RECTIFIERS

MBRX220H--MBRX260H

FEATURES

- Low forward surge current
- Ideal for surface mounted applications
- Low leakage current



MECHANICAL DATA

- Case: JEDEC SOD-123FL, molded plastic over passivated chip
- Terminals: Solder Plated, solderable per MIL-STD-750, Method 2026
- Polarity: Color band denotes cathode end

Maximum Ratings (@TA = 25°C unless otherwise specified)

| Characteristic | Symbol | MBRX220H | MBRX230H | MBRX240H | MBRX260H | UNITS |
|-----------------------------------------------------------------------------------------|------------|----------|----------|----------|----------|-------|
| Device marking code | | H22 | H23 | H24 | H26 | |
| Maximum recurrent peak reverse voltage | V_{RRM} | 20 | 30 | 40 | 60 | V |
| Maximum RMS voltage | V_{RMS} | 14 | 21 | 28 | 42 | V |
| Maximum DC blocking voltage | V_{DC} | 20 | 30 | 40 | 60 | V |
| Maximum average forward rectified current $T_J=90^\circ\text{C}$ | $I_{(AV)}$ | 2.0 | | | | A |
| Peak forward surge current 8.3ms single half-sine-wave superimposed on rated load | I_{FSM} | 40 | | | | A |

Thermal Characteristics

| Characteristic | Symbol | MBRX220H | MBRX230H | MBRX240H | MBRX260H | UNITS |
|-----------------------------|-----------|----------------|----------|----------|----------|-------|
| Operating temperature range | T_J | - 55 --- + 150 | | | | °C |
| Storage temperature range | T_{STG} | - 55 --- + 150 | | | | °C |

Electrical Characteristics (@TA = 25°C unless otherwise specified)

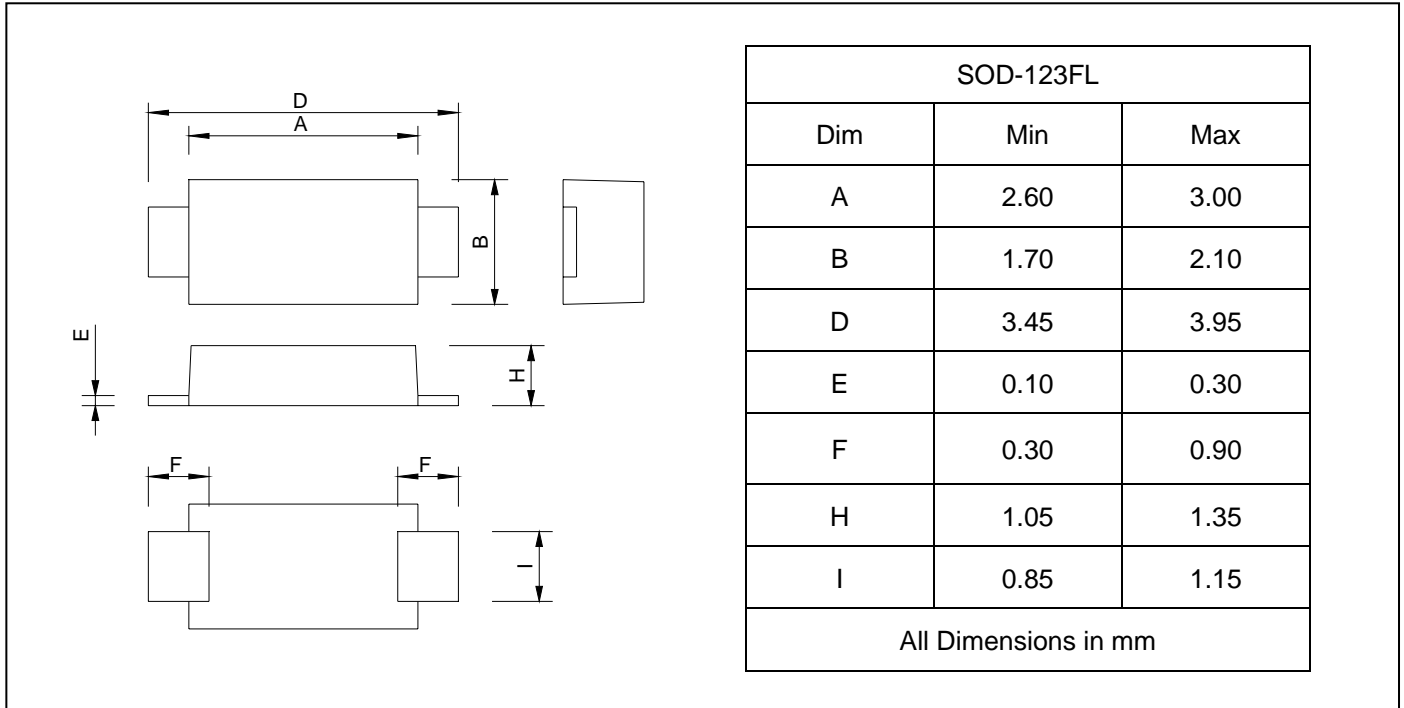
| Characteristic | Symbol | MBRX220H | MBRX230H | MBRX240H | MBRX260H | UNITS |
|-----------------------------------------------------------------------------------------------------------|--------|-----------|----------|----------|----------|-------|
| Maximum instantaneous @ $I_{FM}=2.0\text{A}$ forward voltage | V_F | 0.55 | | | 0.75 | V |
| Maximum DC reverse current $T_J=25^\circ\text{C}$ at rated DC blocking voltage $T_J=125^\circ\text{C}$ | I_R | 0.1 10 | | | | m A |



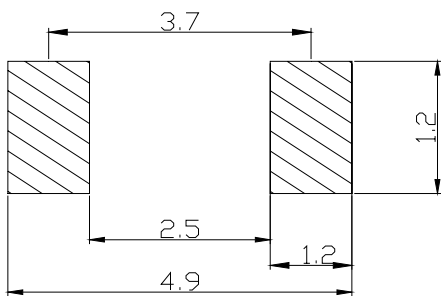
**SURFACE MOUNT SCHOTTKY
BARRIER RECTIFIERS**

MBRX220H--MBRX260H

PACKAGE OUTLINE DIMENSIONS



SOLDERING FOOTPRINT



Unit : mm

PACKAGE INFORMATION

| Device | Package | Shipping |
|--------------------|-----------|-----------------|
| MBRX220H--MBRX260H | SOD-123FL | 10000/Tape&Reel |



SURFACE MOUNT SCHOTTKY BARRIER RECTIFIERS

MBRX220H--MBRX260H

FIG.1 – FORWARD DERATING CURVE

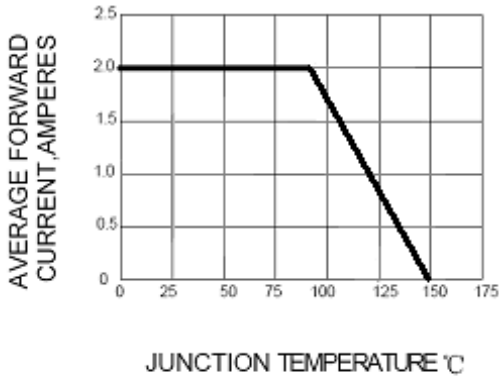


FIG.2– PEAK FORWARD SURGE CURRENT

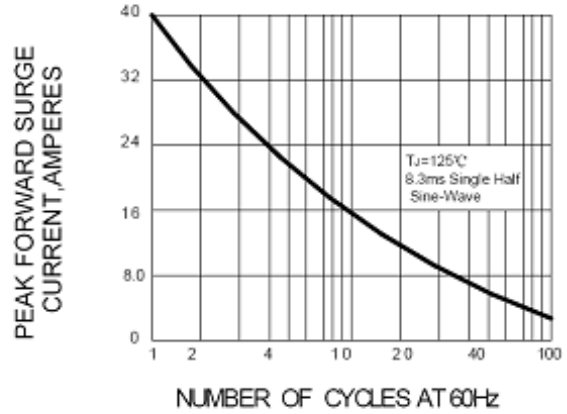


FIG.3 – TYPICAL FORWARD CHARACTERISTICS

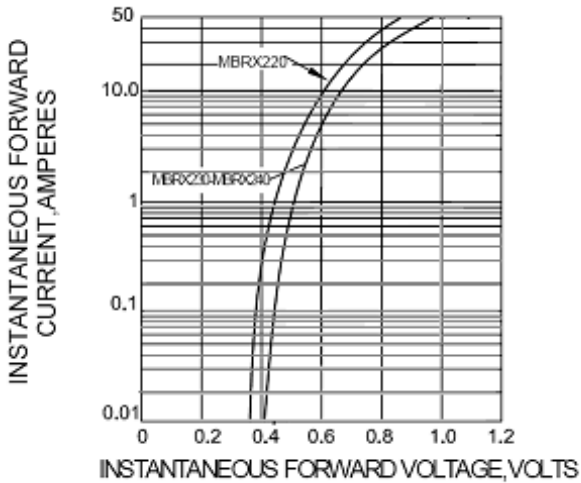


FIG.4 – TYPICAL REVERSE CHARACTERISTICS

