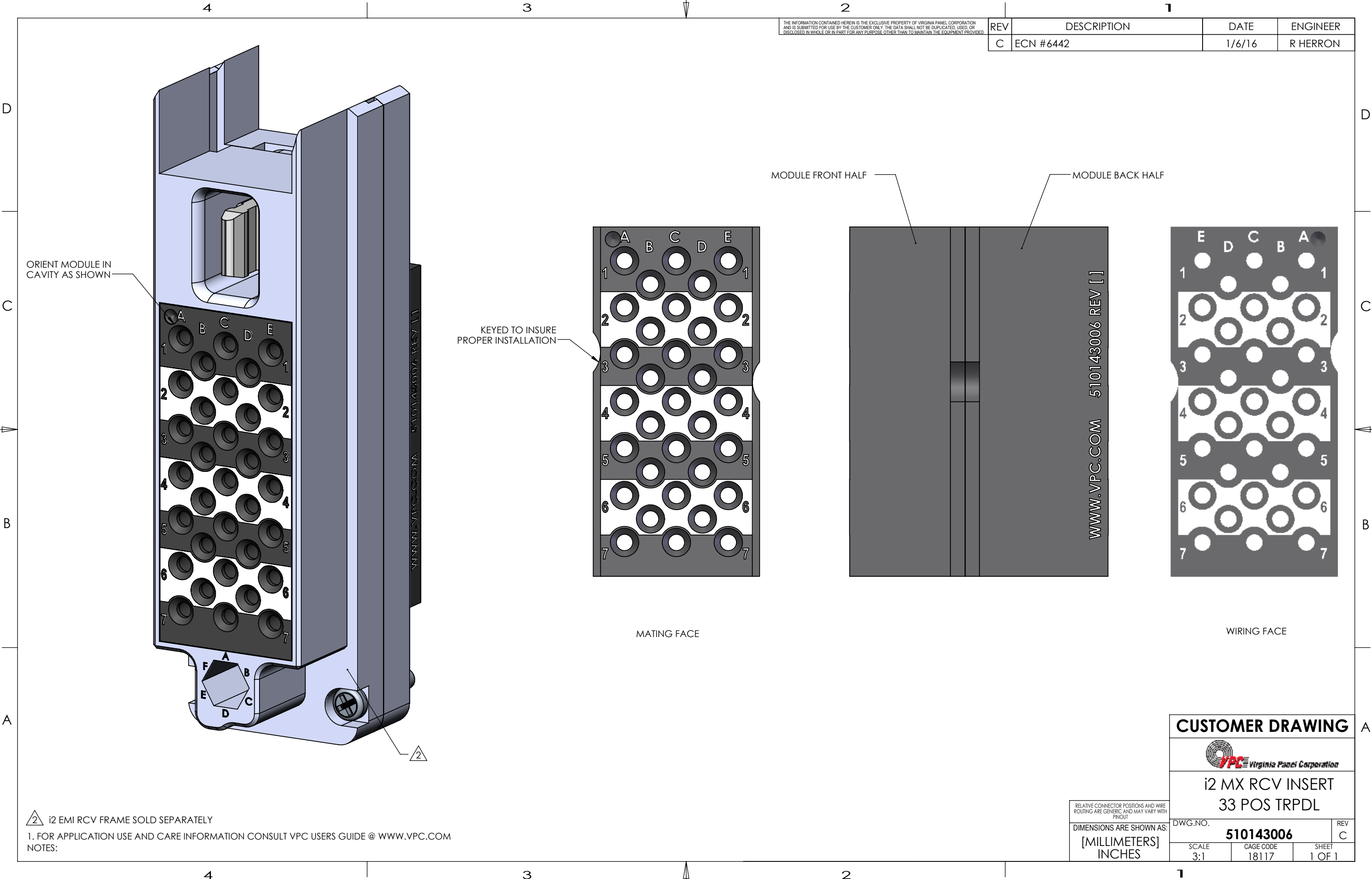


THE INFORMATION CONTAINED HEREIN IS THE EXCLUSIVE PROPERTY OF VIRGINIA PANEL CORPORATION AND IS SUBMITTED FOR USE BY THE CUSTOMER ONLY. THE DATA SHALL NOT BE DUPLICATED, USED, OR DISCLOSED IN WHOLE OR IN PART FOR ANY PURPOSE OTHER THAN TO MAINTAIN THE EQUIPMENT PROVIDED.

REV	DESCRIPTION	DATE	ENGINEER
C	ECN #6442	1/6/16	R HERRON



ORIENT MODULE IN CAVITY AS SHOWN

KEYED TO INSURE PROPER INSTALLATION

MODULE FRONT HALF

MODULE BACK HALF

MATING FACE

WIRING FACE

2 i2 EMI RCV FRAME SOLD SEPARATELY
 1. FOR APPLICATION USE AND CARE INFORMATION CONSULT VPC USERS GUIDE @ WWW.VPC.COM
 NOTES:

RELATIVE CONNECTOR POSITIONS AND WIRE ROUTING ARE GENERIC AND MAY VARY WITH PINOUT
 DIMENSIONS ARE SHOWN AS:
 [MILLIMETERS]
 INCHES

CUSTOMER DRAWING

VPC Virginia Panel Corporation

**i2 MX RCV INSERT
 33 POS TRPDL**

DWG.NO.	510143006	REV	C
SCALE	3:1	CAGE CODE	18117
		SHEET	1 OF 1