

4

3

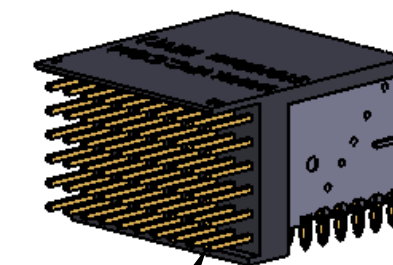
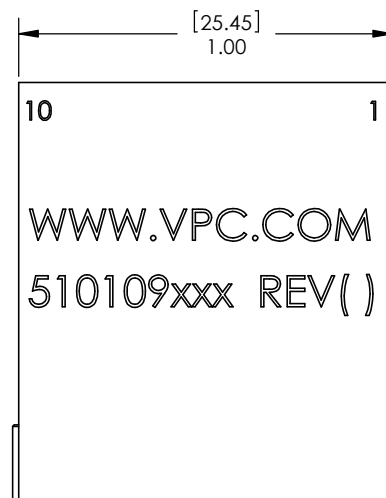
2

1

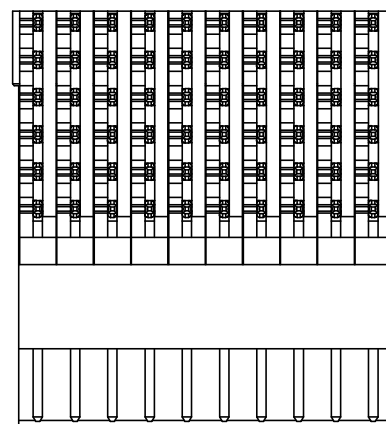
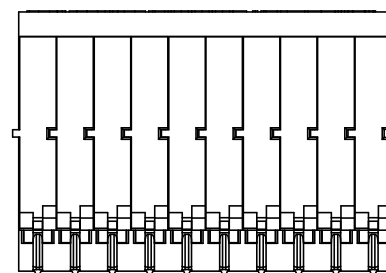
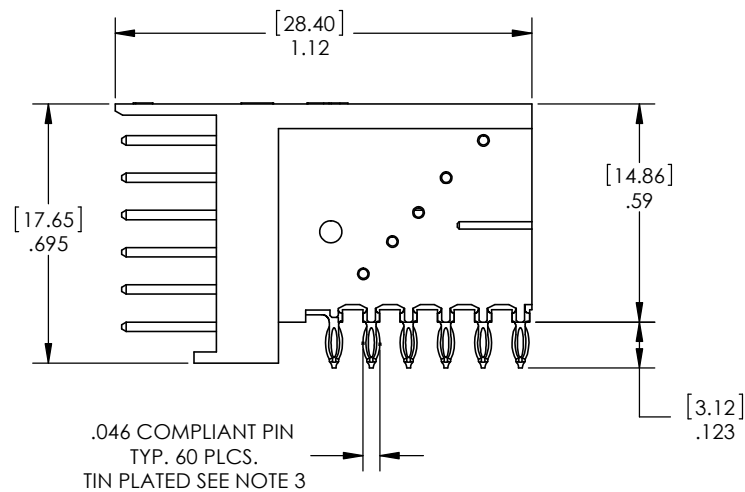
DO NOT SCALE DRAWING

THE INFORMATION CONTAINED HEREIN IS THE EXCLUSIVE PROPERTY OF VIRGINIA PANEL CORPORATION AND IS SUBMITTED FOR USE BY THE CUSTOMER ONLY. THE DATA SHALL NOT BE DUPLICATED, USED, OR DISCLOSED IN WHOLE OR IN PART FOR ANY PURPOSE OTHER THAN TO MAINTAIN THE EQUIPMENT PROVIDED. CONSULT WITH VIRGINIA PANEL CORPORATION ENGINEERING IF MORE DETAIL IS REQUIRED.

REVISIONS			
REV	DESCRIPTION	DATE	ENGR
B	ECN #5477	9/9/2014	J SHAND



CONTACT PINS
.025 [0.64] SQ. POSTS
GOLD PLATED
SEE NOTE 3



- 6. SEE SHEET 2 FOR NOTE.
 - 5. SEE SHEET 2 FOR NOTE.
 - 4. CONTINUOUS MAX. CARRY CURRENT 5 AMPS
 - 3. HEADER CONTACT PINS PLATED 30 MIN. MICROINCHES OF GOLD OVER 100 MIN. MICROINCHES OF NICKEL. THE COMPLIANT PINS PLATED 100-200 MICROINCHES OF TIN OVER 50 MIN. MICROINCHES OF NICKEL
 - 2. BAG (1) M2 X 8 PAN HEAD PHILLIPS SCREW TO BE INCLUDED WITH HEADER
 - 1. FOR APPLICATION USE & CARE INFORMATION CONSULT VPC USERS GUIDE @WWW.VPC.COM
- NOTES:

CUSTOMER DRAWING

VIRGINIA PANEL CORPORATION
WWW.VPC.COM

MODULE HDR 60 POSITION
RT ANG COMP PIN

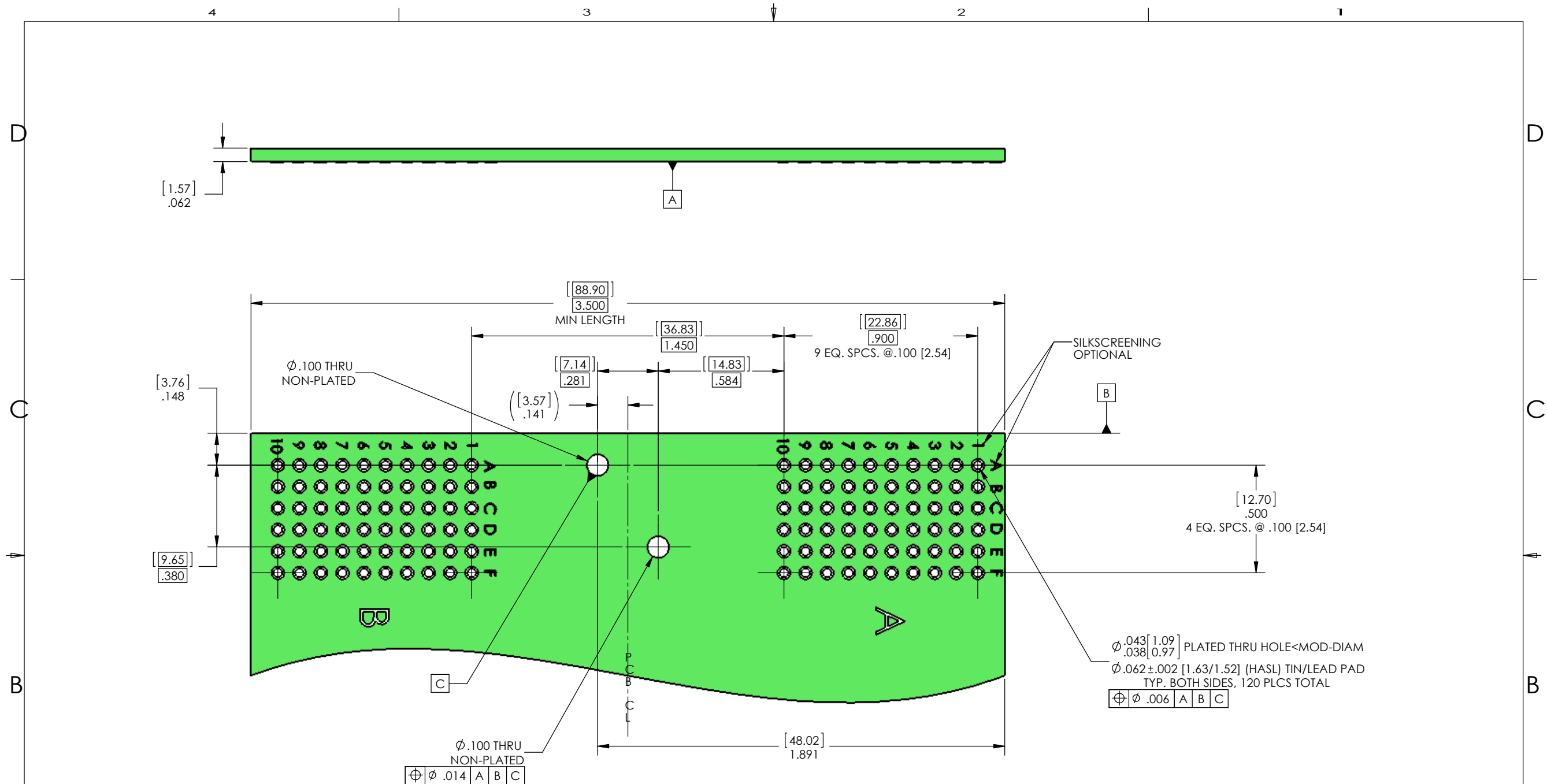
DIMENSIONS ARE SHOWN AS:		SIZE	CAGE CODE	DWG. NO.	REV
[MILLIMETERS]	INCHES	C	18117	510109206	B
		SCALE: 3:1	510109206	7/12/11	SHEET 1 OF 2

4

3

2

1



**PCB LAYOUT FOR
310130104 RECEIVER
COMPONENT SIDE SHOWN**

6. RECOMMENDED PCB LAYOUT
CONNECTOR MOUNTS THIS SIDE
BOARD THICKNESS = [1.57] .062 OR [2.29] .090
DIMENSION TOLERANCE = ±.[13].005 UNLESS OTHERWISE SPECIFIED

5. FOR APPLICATION USE AND CARE INFORMATION CONSULT VPC USERS GUIDE @ WWW.VPC.COM

NOTES:
DO NOT SCALE DRAWING

CUSTOMER DRAWING - CUSTOMER DRAWING - CUSTOMER DRAWING

THE INFORMATION CONTAINED HEREIN IS THE EXCLUSIVE PROPERTY OF VIRGINIA PANEL CORPORATION AND IS SUBMITTED FOR USE BY THE CUSTOMER ONLY. THE DATA SHALL NOT BE DUPLICATED, USED, OR DISCLOSED IN WHOLE OR IN PART FOR ANY PURPOSE OTHER THAN TO MAINTAIN THE EQUIPMENT PROVIDED.

SIZE C	CAGE CODE 18117	DWG.NO. 510109206	REV B
SCALE: 2:1		510109206	SHEET 2 OF 2