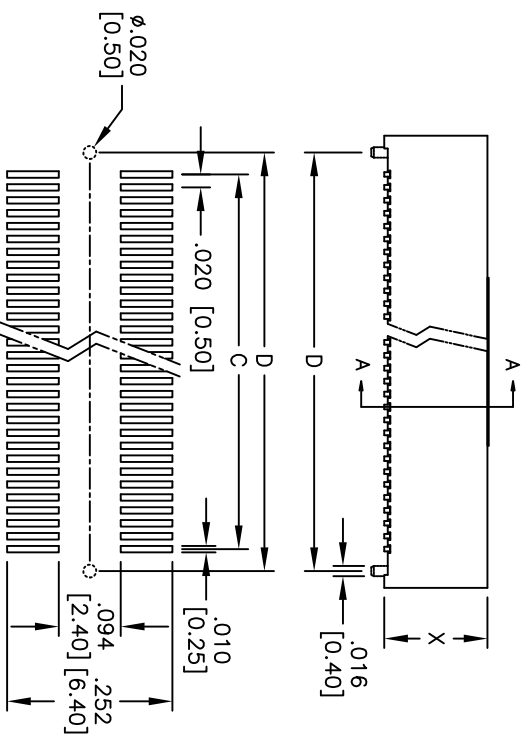
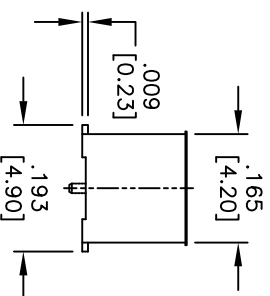
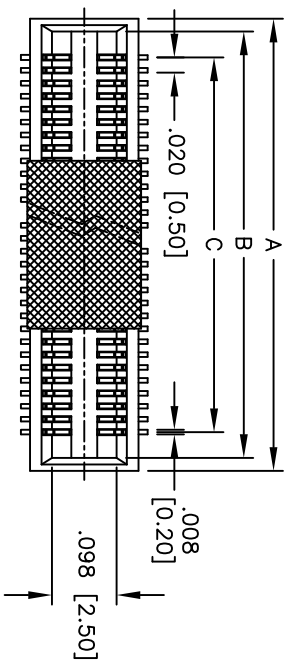


Rev	AWO #	Description	Date	Appr
-		RELEASED	7/19/10	

APPROVED: \_\_\_\_\_  
 DATE: \_\_\_\_\_ TITLE: \_\_\_\_\_



RECOMMENDED PCB LAYOUT

ADAM P/N	X
BB5-SO-XXX-G-3.00-PP-T/R	.118 [3.00]
BB5-SO-XXX-G-3.50-PP-T/R	.138 [3.50]
BB5-SO-XXX-G-4.00-PP-T/R	.157 [4.00]
BB5-SO-XXX-G-6.00-PP-T/R	.236 [6.00]

PACKAGED ON TAPE & REEL

A = .020 [0.50] x (No. of Positions per row) + .098 [2.50]  
 B = .020 [0.50] x (No. of Positions per row) + .059 [1.50]  
 C = .020 [0.50] x (No. of Positions per row) - .020 [0.50]  
 D = .020 [0.20] x (No. of Positions per row) + .047 [1.20]

**SPECIFICATIONS:**  
 Material: Insulator: Hi-temp thermoplastic, rated UL 94V-0  
 Insulator color: Gray  
 Contacts: Phosphor Bronze  
 Plating: Gold flash over Nickel underplate overall.  
 Electrical: Current rating: 0.5 Amps  
 Contact resistance: 60 Mohms max @ DC100mA  
 Insulation resistance: 100 Mohms min @ DC 500V  
 Dielectric withstanding voltage: AC 150V for 1 minute  
 Operating Temperature: -25°C to +85°C  
 Environmental: Lead free, RoHS compliant  
 Recommended soldering temp: 260°C for 5 seconds



**ADAM TECH**

909 Rahway Avenue, Union, NJ 07083  
 Phone: 908-687-5000 Fax: 908-687-5710

TITLE: .020 [0.50] BOARD TO BOARD SOCKET, SMT TYPE  
 MATED WITH: BB5-PO-XXX-G-3.15-PP-T/R

UNLESS OTHERWISE SPECIFIED ALL DIMENSIONS ARE INCHES [MM] TOLERANCES: EXCEPT AS NOTED INCHES	HOLDS	DATE	SIZE	PART NO.	REV.
.X ± .10	ØX ± .10	7/19/10	X	BB5-SO-XXX-G-X.XX-PP-T/R	-
.XX ± .020	ØXX ± .015				
.XXX ± .015	ØXXX ± .010				
APPROVALS	DATE				
DRAWN	DRY				
CHECKED					
APPROVED					