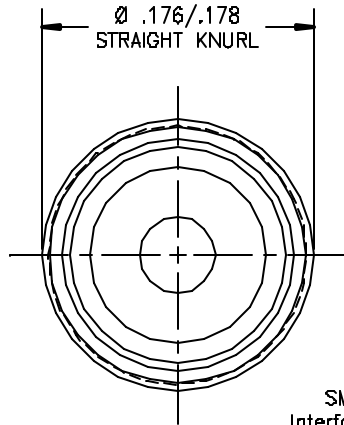
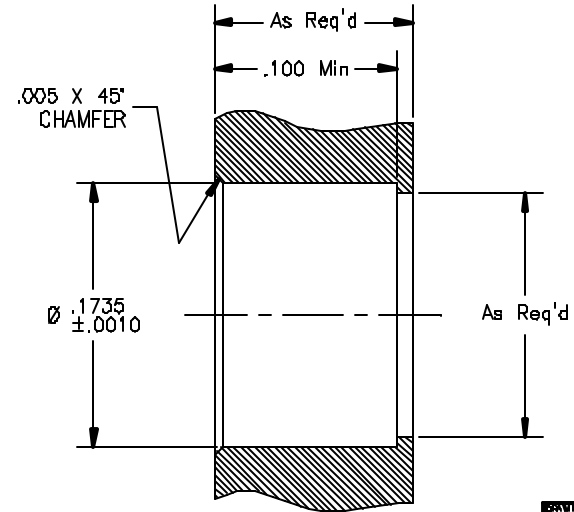
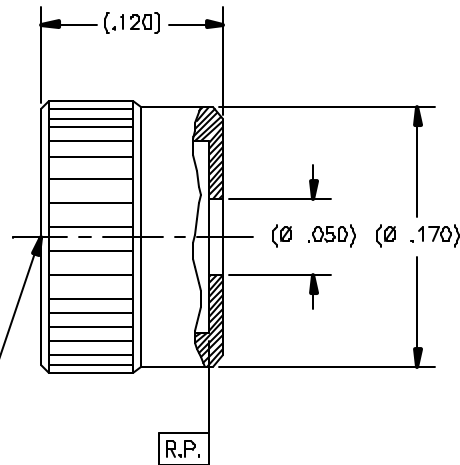


P/N	INTERFACE(S)
-1SF	FULL DETENT
-2SF	LIMITED DETENT
-3SF	SMOOTH BORE

REVISIONS				
ZONE	REV.	DESCRIPTION(S)	DATE	BY
-	D	ECO 19092	03.10.06	P.MAO



SMP Male Interface Per Mil-Std-348 (Less Contact)



DRAWING NO.	P675	REV.	D
-------------	------	------	---

RECOMMENDED MOUNTING HOLE

MATERIAL(S):	ELECTRICAL:	MECHANICAL:	ENVIRONMENTAL:
Body: 303 sst per ASTM A-582.	None	Interface Dimension(s): Per Mil-Std-348. Connector Permeability: Less than 2.0 mu. Connector Durability: 100 Cycles minimum for Full Detent. 500 Cycles minimum for Limited Detent. 1000 Cycles minimum for Smooth Bore. Force To Engage And Disengage: Engage: 15 pounds maximum for Full Detent. 10 pounds maximum for Limited Detent. 2 pounds maximum for Smooth Bore. Disengage: 5 pounds minimum for Full Detent. 2 pounds minimum for Limited Detent. .5 pound minimum for Smooth Bore.	Temperature Range: -65°C to +165°C. Thermal Shock: Mil-Std-202, Method 107, Test Cond. B. Moisture Resistance: Mil-Std-202, Method 106, except step 7b shall be omitted. Insulation resistance at least 1000 MegOhms within 5 minutes after removal from humidity. Corrosion: Mil-Std-202, Method 101, Test Cond. B. Vibration: Mil-Std-202, Method 204, Test Cond. D. Shock: Mil-Std-202, Method 213, Test Cond. I.

FINISH(ES):

Body:
Passivate per ASTM A-967.

APPLICABLE TENSOLITE DOCUMENTS		
WORK STD	FRGD INST	ASSY INST
NA	NA	NA

NOTICE

THIS DRAWING INCLUDES A CONFIDENTIAL INVESTMENT DESIGN ORIGINATED BY TENSOLITE COMPANY AND ALL DESIGN, MANUFACTURING INFORMATION, USE AND SALE RIGHTS RESERVING THE SAME ARE EXPRESSLY RESERVED. IT IS GRANTED UNDER A CONFIDENTIAL RELATIONSHIP FOR A SPECIFIC PURPOSE AND THE RECIPIENT AGREES BY ACCEPTING THIS DRAWING NOT TO DISSEMINATE, REPRODUCE, OR IN ANY MANNER DISCLOSE TO ANY UNAUTHORIZED PERSON TO WHOM IT IS NOT INTENDED. IN OTHER INDUSTRIES, SPECIAL FEATURES REGULAR TO THE DESIGN, ALL PATENT RIGHTS HERETO ARE EXPRESSLY RESERVED BY TENSOLITE COMPANY, LONG BEACH, CALIFORNIA 90815.

TOLERANCES AND NOTES EXCEPT AS NOTED	
DIMENSIONS ARE IN INCHES	
LINEAR .0125 DIA ANGULAR ± 1/2°	
RADIATION ± 1/32"	
1. MACHINE FINISH: ✓ FINE	
2. BREAK ALL SHARP EDGES .005 MAX.	
3. MACHINED SURFACES UNLESS OTHERWISE SPECIFIED TO RESPECTIVE FINISH	
4. MACHINED DIMENSIONS CONCENTRIC WITH KEY WAY	
5. DIMENSIONS TO BE MET BEFORE PLATING	
6. CHAMFER ALL VERTICES 45°	
7. BRASS FOR H-20	
8. REMOVE TRAPPED LUBES ON TIEFLO	
9. REMOVE ALL BURRS	

UNITS	SIZE	PRECISION	REQUIREMENT
INCH			
HIGH PERFORMANCE CABLES & INTERCONNECT SYSTEMS Long Beach, California 90815			
DRAWN BY: P.MAO 02/08/98		TITLE: SMP MALE PRESS FIT SHROUD	
CHECKED: P.MAO 03.10.06		SCALE: 16:1	
DATE: 03.10.06		SHEET 1 OF 1	
SIZE: C	DATE CODE: 30990	DRAWING NO: P675	REV: D