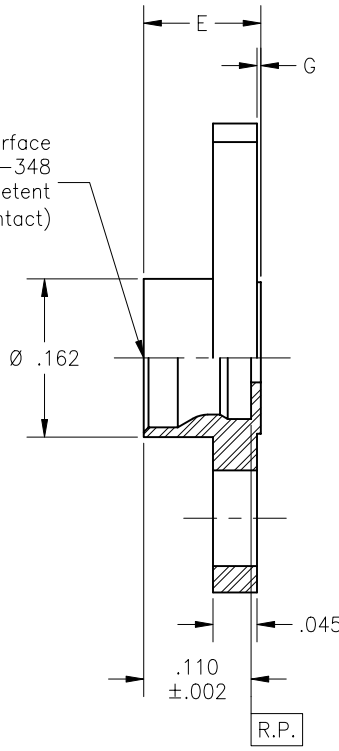
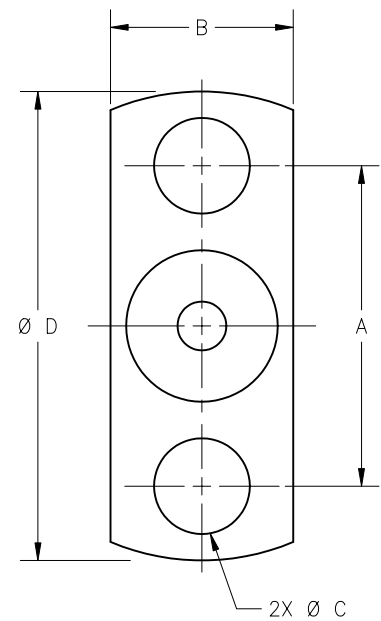


P/N	A	B	Ø C	Ø D	E	F	G
-1SF	.328	.187	.098	.480	.120	.045	.004
-2SF	.481	.223	.102	.625	.120	.045	.002
-3SF	.282	.165	.073	.400	.120	.045	.002
-4SF	.400	.186	.103	.550	.120	.045	.004
-5SF	.282	.165	.073	.400	.120	.045	.005
-6SF	.282	.165	①	.400	.120	.045	.005
-7SF	NR	NR	NR	.625	.120	.075	.003
-8SF	.481	.223	.102	.625	.120	.045	.004
-8	.481	.223	.102	.625	.120	.045	.004
-9SF	.282	.165	.073	.400	.120	.045	.004
-10SF	.328	.187	.098	.480	.120	.045	.005

SMP Male Interface  
Per Mil-Std-348  
Full Detent  
(Less Contact)



REVISIONS			
REV	DESCRIPTION	DATE	BY
G	ECO 21903	01.13.09	DKN
H	ECO 22232	06.05.09	K.NG
J	ECO 26131 (ADD -8)	08.31.12	YP



Note(s):  
① 2X #0-80 UNF-2B X Ø .085 X 90° COUNTERSINK.

**MATERIAL:**  
Body:  
303 sst per ASTM A-582.

**MECHANICAL:**  
Mating Characteristics:  
Interface per Mil-Std-348.  
Force To Engage & Disengage:  
Engage: 15 pounds max.  
Disengage: 5 pounds min.  
Connector Durability:  
100 cycles min.

**ENVIRONMENTAL:**  
Temperature Range: -65°C to +165°C.  
Thermal Shock:  
Mil-Std-202, Method 107, Test Cond. B.  
Moisture Resistance:  
Mil-Std-202, Method 106, except step 7b shall be omitted.  
Corrosion:  
Mil-Std-202, Method 101, Test Cond. B.  
Vibration:  
Mil-Std-202, Method 204, Test Cond. D.  
Shock:  
Mil-Std-202, Method 213, Test Cond. I.

**FINISH:**  
Body: (for SF)  
Passivate per ASTM A-967, Nitric 1.  
Body: (for BASIC)  
Gold plate per - ASTM B-488, type II, code C or D,  
over nickel underplate per SAE-AMS-QQ-N-290, class 1.

APPLICABLE CARLISLE IT DOCUMENTS		
WORK STD	PROD INST	ASSY INST
NA	NA	NA

**NOTICE**  
THIS DRAWING EMBODIES A CONFIDENTIAL PROPRIETARY DESIGN ORIGINATED BY CARLISLE INTERCONNECT TECHNOLOGIES AND ALL DESIGN, MANUFACTURING, RE-PRODUCTION, USE AND SALE RIGHTS REGARDING THE SAME ARE EXPRESSLY RESERVED. IT IS SUBMITTED UNDER A CONFIDENTIAL RELATIONSHIP FOR A SPECIFIC PURPOSE AND THE RECIPIENT AGREES BY ACCEPTING THIS DRAWING NOT TO SUPPLY OR DISCLOSE ANY INFORMATION REGARDING IT TO ANY UN-AUTHORIZED PERSON TO INCORPORATE IN OTHER PRODUCTS ANY SPECIAL FEATURE PECULIAR TO THIS DESIGN. ALL PATENT RIGHTS HERETO ARE EXPRESSLY RESERVED BY CARLISLE INTERCONNECT TECHNOLOGIES, CERRITOS, CA 90703

- TOLERANCES AND NOTES EXCEPT AS NOTED**  
DIMENSIONS ARE IN INCHES.  
LINEAR .XX ±.015 ANGULAR ± 1/2°  
.XXX ±.005  
FRACTION ± 1/32
- MACHINE FINISH:  $\sqrt{32}$  RMS
  - BREAK ALL SHARP EDGES .003 MAX.
  - MACHINED FILLETS .005 MAX.
  - MACHINED SURFACES SQUARE TO RESPECTIVE AXIS WITHIN .005 INCHES PER INCH.
  - MACHINED DIAMETERS CONCENTRIC WITHIN .002 T.I.R.
  - DIMENSIONS TO BE MET BEFORE PLATING.
  - CHAMFER ALL THREADS 45°.
  - THREADS PER H-28
  - REMOVE FRAYED EDGES ON TEFLON.
  - REMOVE ALL BURRS.

MATERIAL		SPECIFICATION		PROCUREMENT			
APPROVAL INITIALS	DATE			TITLE			
DRAWN BY	02/15/96			SMP FULL DETENT STRAIGHT 2 HOLE FLANGE MOUNT SHROUD			
CHECKED BY				SCALE	10/1	DIRECTORY\SUB-DIRECTORY	SHEET 1 of 1
TEST ENGG				DESIGN ENGG	DNG	06.26.09	OUTLINE/_OLP/
QUALITY		MFG ENGG					
ECO APPRV	DNG	DATE	08.31.12	SIZE	C 30990		
		CASE CODE		DRAWING NO.	P670		
		REV.			J		