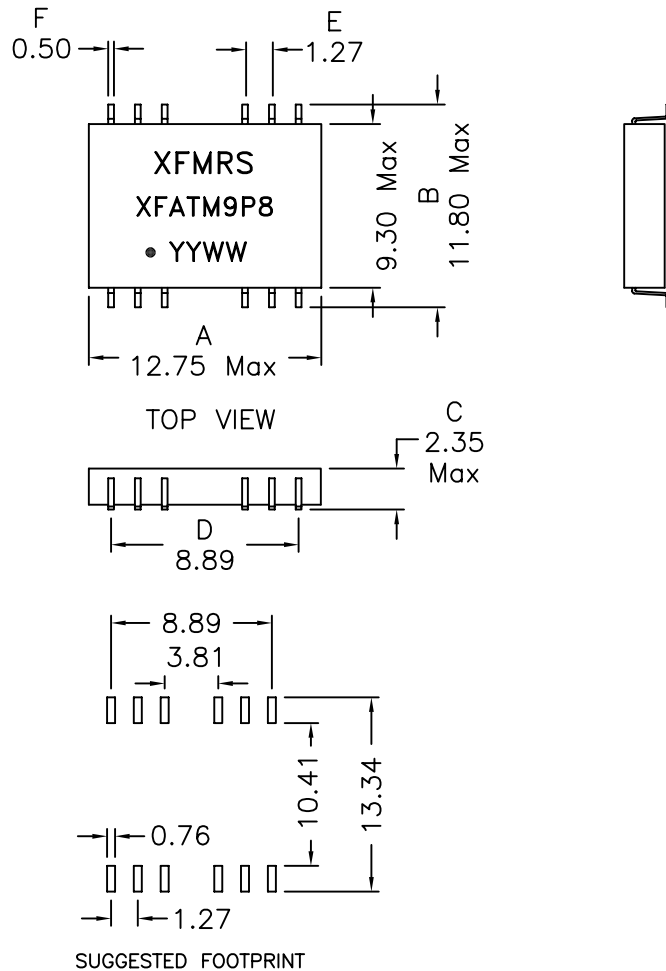
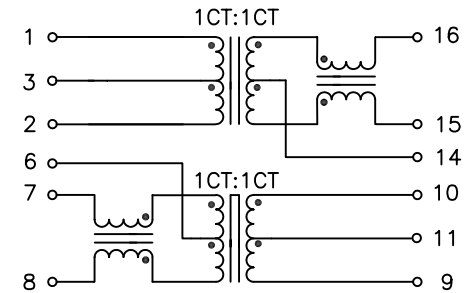


1. Mechanical Dimensions:



2. Schematic:



3. Electrical Specifications: @25°C

OCL: 350uH Min @100KHz 0.1V 0/8mAdc

Q: Pins 1-2 & 10-9 8 Min @10KHz 50mV

Turns Ratio: (1-3-2):(16-14-15) = 1CT:1CT±3%
 (7-6-8):(10-11-9) = 1CT:1CT±3%

Insertion Loss: 100KHz-100MHz -1.0dB Max

Return Loss: 30MHz -16dB Min

60MHz -12dB Min

80MHz -12dB Min

Differential to Common Mode Rejection:

-42dB Min @ 30MHz

-33dB Min @ 100MHz

Crosstalk: -45dB Min @30MHz

-40dB Min @62MHz

-35dB Min @100MHz

HIPOT: 1500VAC

Notes:

- Solderability: Leads shall meet MIL-STD-202G, Method 208H for solderability.
- Flammability: UL94V-0
- ASTM oxygen index: > 28%
- Insulation System: Class F 155°C. UL file E151556
- Operating Temperature Range: All listed parameters are to be within tolerance from 0°C to 70°C
- Storage Temperature Range: -55°C to +125°C
- Aqueous wash compatible
- SMD Lead Coplanarity: ±0.004"(0.102mm)
- Electrical and mechanical specifications 100% tested
- RoHS Compliant Component

DOC. REV: B/1

XFMRS Inc www.XFMRS.com	Title: 10/100BASE-TX Filter Modules		
	UNLESS OTHERWISE SPECIFIED TOLERANCES: .xx ±0.25 Dimensions in MM		P/N: XFATM9P8 REV. B
	DWN. CHK. APP.	Feng YK Liao BW	Sep-20-11 Sep-20-11 Sep-20-11
SHT 1 OF 1			

PROPRIETARY

Document is the property of XFMRS Group & is not allowed to be duplicated without authorization.