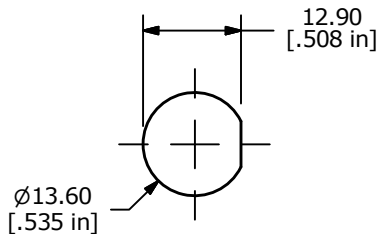
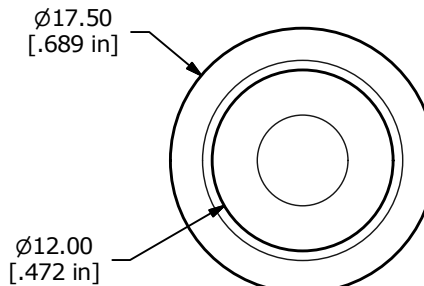


▲ **CIRCUIT: SPST
OFF-(ON)
MOMENTARY**



PANEL MOUNTING



▲ **ACTUATOR:
COLOR WHITE**

▲ **HOUSING:
BLACK**

▲ **THREAD:
M12X0.75**

▲ **12.90
[.508 in]**

**3.50
[.138 in]**

**2.80
[.110 in]**

**1.0 [.04]
THICK
RUBBER SEAL**

**2.0
[.08 in]**

**5.00
[.197 in]**

**1.20
[.047 in]**

EPOXY SEAL

**.40
[.016 in]**

**5.08
[.200 in]**

**Ø13.30
[.524 in]**

**12.77
[.503 in]
FLAT**

NOTE:

1. ALL DIMENSIONS IN MM [INCH]
2. GENERAL TOLERANCE: X.X = ±0.4
X.XX = ±0.25
3. TERMINAL NUMBERS FOR REF ONLY
4. CIRCUIT: SPST OFF-MOMENTARY ON
5. CONTACT MATERIAL: Gold over SILVER
- ▲ 6. RATING: 125mA @ 125 VAC
100mA @ 50 VDC
7. ELECTRIC LIFE: 500,000 CYCLES AT FULL LOAD
8. CONTACT RESISTANCE: 50 milli-OHM max. (INITIAL)
9. INSULATION RESISTANCE: 1,000 MEGA-OHM min. @ 500VDC
10. DIELECTRIC STRENGTH: 1,000 VAC rms.
11. OPERATING FORCE: 350 gf +/- 150 gf
12. OPERATING TEMPERATURE: -30°C to +85°C
13. CONTACT BOUNCE: 10ms MAX.
- ▲ 14. TRAVEL: 1.5mm
15. PANEL THICKNESS RANGE: 1.5 - 4.0mm
16. ▲ DENOTES CRITICAL PARAMETER.
17. 2011/65/EU (ROHS) COMPLIANT
18. MAX MOUNTING TORQUE: 1.5Nm APPLIED TO HEX NUT
19. HARDWARE INCLUDED:
 1. T081101 LOCK WASHER (1)
 2. T081102 HEX NUT (1)
 3. T081100 RUBBER SEAL (1)
20. SEAL RATING: IP67 AT THE FRONT PANEL

E	23236	drawing update	3/8/18	MW
D	21593	CHANGE NOTE 20: IP67 WAS IP65	9/24/14	EBP
C	19473	CORRECT NOTE & DIM / DWG CLEAN-UP	12/01/10	BMA
B	19358	MISC. DRAWING UPDATES	10/25/10	BMA
A	17934	New Release	1/23/08	rc
REV	PCR NO	DESCRIPTION	DATE	BY

THE INFORMATION CONTAINED IN THIS DOCUMENT IS PROPRIETARY TO E-SWITCH AND IS NOT TO BE COPIED OR TRANSFERRED



TITLE RP8100B2M1CEBLKWHTNIL				
SCALE	DATE	DR	DWG	REV
2 : 1	1/23/2008	rc	ST081002	E