



Solid State Devices, Inc.

14701 Firestone Blvd * La Mirada, Ca 90638
 Phone: (562) 404-4474 * Fax: (562) 404-1773
 ssdi@ssdi-power.com * www.ssdi-power.com

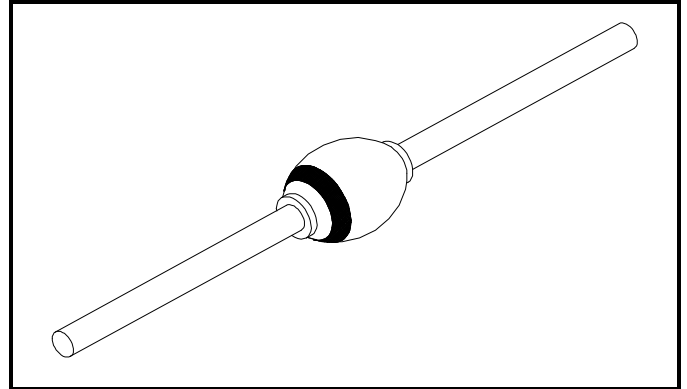
SDRS614

250 mA
2,200 VOLTS
FAST RECOVERY
HIGH VOLTAGE RECTIFIER

Designer's Data Sheet

FEATURES:

- **Fast Reverse Recovery: 300 nsec Maximum**
- **PIV 2,200 Volts**
- **Hermetically Sealed**
- **Void-Free Construction**
- **Metallurgically Bonded**
- **175°C Maximum Operating Temperature**
- **Miniature Package**
- **TX, TXV, and Space Level Screening Available**
- **Lead Free Termination Available, Contact Factory**



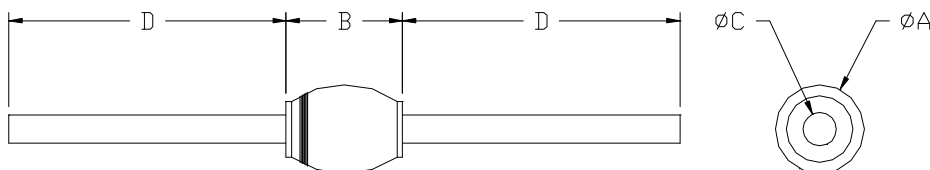
ELECTRICAL CHARACTERISTICS ^{1/ 2/ 3/ 4/}

Part Number	Peak Inverse Voltage	Average Rectified Current	Reverse ^{5/} Recovery Time	Maximum Junction Capacitance	Maximum Surge Current (1 Cycle)	Typical Thermal Impedance	Maximum Forward Voltage	Maximum Reverse Current
Symbol	PIV	I_O	t_{rr}	C_J	I_{FSM}	θ_{JL}	V_F	I_R @ 80% of PIV
Units	Volts	mA	nsec	pF	Amps	°C/W	Volts	µA
Conditions			Max	V _R = 100V, f = 1MHz		L = 1/4"	60mA 250mA	25°C 100°C
	2,200	250	300	5.0	20	45	1.7 2.2	5.0 150

NOTES:

- 1/ Unless Otherwise Specified, All Electrical Characteristics @25°C.
- 2/ Operating and testing over 10,000 V/inch may require encapsulation or immersion in suitable dielectric material.
- 3/ Maximum lead temperature for soldering is 250°C, 3/8" from case for 5 sec. maximum.
- 4/ Operating and storage temperature: -65°C to +175°C.
- 5/ Recovery Conditions I_F = 0.5 A, I_R = 1.0 A rec. to 0.25 A.

PACKAGE OUTLINE: AXIAL RECTIFIER



DIMENSIONS

CODE	MIN	MAX
A	---	.135"
B	---	.170"
C	.028"	.032"
D	1.0"	---

NOTE: All specifications are subject to change without notification. SCD's for these devices should be reviewed by SSDI prior to release.

DATA SHEET #: RC0098C

DOC