



**P/N: HR002A DATA SHEET**

**Feature**



- Supports TUT systems Home RUN(HPNA)Technology.
- Includes Sidactor, isolation XFMRs, Common Mode Chock And Bandpass Filters.
- Pick & Place and IR reflow Compatible.
- Operating temperature range: 0°C to +70°C.
- Storage temperature range: -25°C to +125°C.

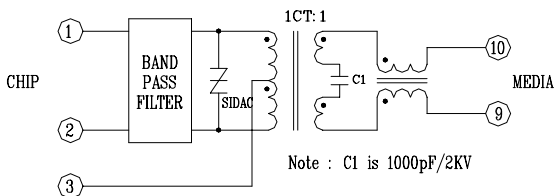
**Electrical Specifications @ 25°C**

Part Number	TUT Insertion Loss (dB Normal/Max)			TUT Return Loss (dB Min)
	6.0MHz	7.5MHz	9.0MHz	6.0MHz-9.0MHz
HR002A	-2.5/-3.0	-2.2/-2.5	-2.5/-3.0	-10

**Continue**

Part Number	TUT Attenuation (dB Normal/Min)		HI-POT (Vrms)
	1.0MHz	27MHz	
HR002A	-70/-65	-55/-47	1500

**Schematic**



**Mechanical**

