



## SMA SPST PIN Diode Switch Operating From 2 GHz to 26.5 GHz Up To +30 dBm

### PIN Diode Switches Technical Data Sheet

PE71S2015

#### Features

- SPST Reflective Switch
- 2.0 GHz to 26.5 GHz
- Insertion Loss 3 dB typ
- Isolation 20 dB min
- Power Input 30 dBm CW max

#### Applications

- Test & Measurement
- Military Communication
- Commercial Communication

#### Description

The PE71S2015 is a SPST Reflective Switch designed to operate over the 2.0 GHz to 26.5 GHz Frequency Range. The switch is designed to maintain low insertion loss, high isolation, and fast switching speed.

#### Electrical Specifications

TTL Control Logic

Off/Isolation: "0"  
 On/Low Loss: "1"

Description	Minimum	Typical	Maximum	Units
Frequency Range	2		26.5	GHz
Impedance		50		Ohms
Return Loss		10		dB
Insertion Loss		3	4.5	dB
Isolation	20			dB
Switching Time			150	ns
Input Power (CW)			1	Watts
Positive Operating Voltage		5		Volts
Negative Operating Voltage		-5		Volts
Operating Temperature	-55		85	deg C

#### Mechanical Specifications

##### Size

Length	1.2 in [30.48 mm]
Width	1.5 in [38.1 mm]
Height	0.6 in [15.24 mm]
Package Type	Connectorized Module
Design	SPST, Reflective
RF Connector	SMA Female

Click the following link (or enter part number in "SEARCH" on website) to obtain additional part information including price, inventory and certifications: [SMA SPST PIN Diode Switch Operating From 2 GHz to 26.5 GHz Up To +30 dBm PE71S2015](#)



SMA SPST PIN Diode Switch Operating From  
2 GHz to 26.5 GHz Up To +30 dBm

## PIN Diode Switches Technical Data Sheet

PE71S2015

### Environmental Specifications

#### Temperature

Operating Range

ESD Sensitivity

-55 to 85 deg C

ESD Sensitive Material, Transport material in Approved  
ESD bags. Handle only in ESD Workstation.



### Compliance Certifications (visit [www.Pasternack.com](http://www.Pasternack.com) for current document)

Not RoHS Compliant

### Plotted and Other Data

Notes:

Click the following link (or enter part number in "SEARCH" on website) to obtain additional part information including price, inventory and certifications: [SMA SPST PIN Diode Switch Operating From 2 GHz to 26.5 GHz Up To +30 dBm PE71S2015](#)

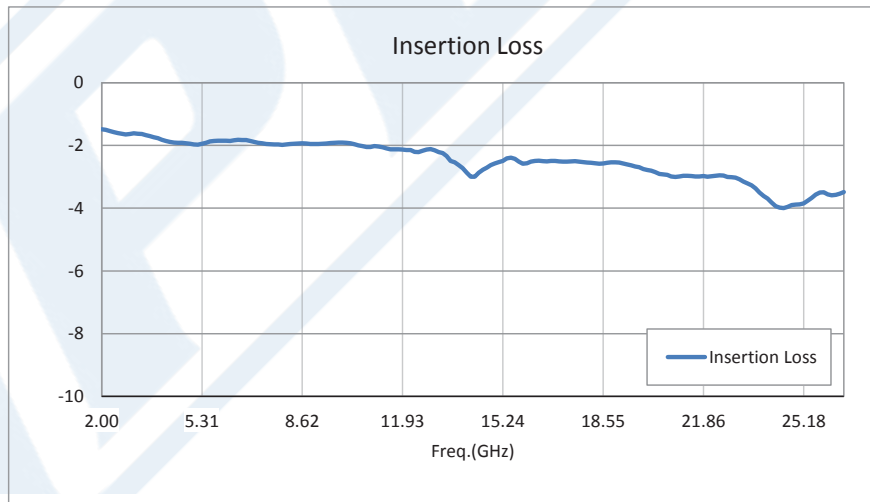
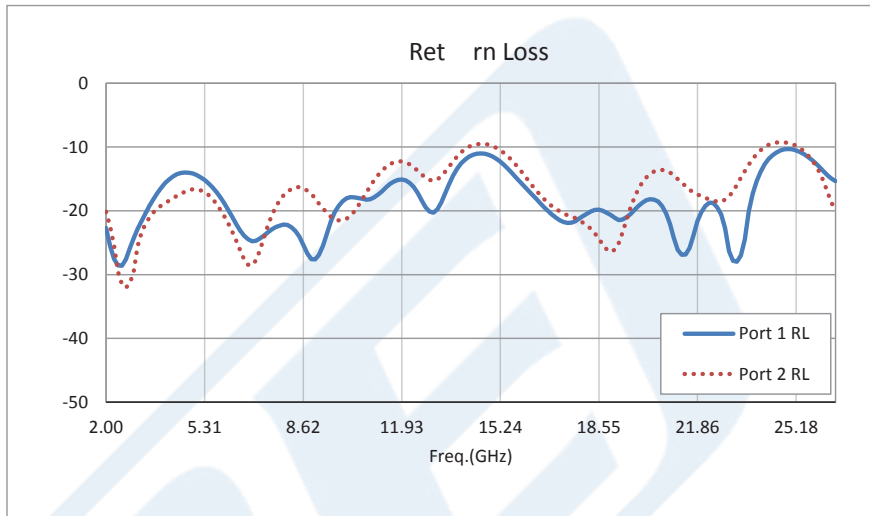


SMA SPST PIN Diode Switch Operating From  
2 GHz to 26.5 GHz Up To +30 dBm

PIN Diode Switches Technical Data Sheet

PE71S2015

Typical Performance Data



Click the following link (or enter part number in "SEARCH" on website) to obtain additional part information including price, inventory and certifications: [SMA SPST PIN Diode Switch Operating From 2 GHz to 26.5 GHz Up To +30 dBm PE71S2015](#)

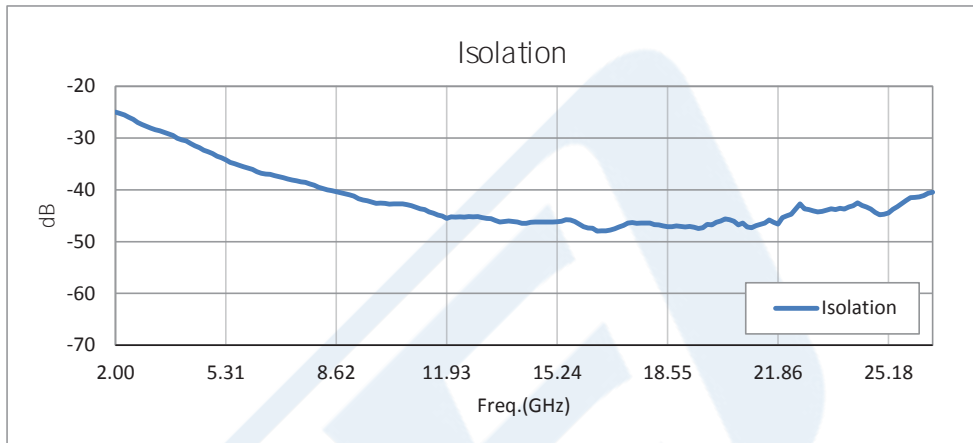




SMA SPST PIN Diode Switch Operating From  
2 GHz to 26.5 GHz Up To +30 dBm

PIN Diode Switches Technical Data Sheet

PE71S2015



SMA SPST PIN Diode Switch Operating From 2 GHz to 26.5 GHz Up To +30 dBm from Pasternack Enterprises has same day shipment for domestic and International orders. Our RF, microwave and millimeter wave products maintain a 99% availability and are part of the broadest selection in the industry.

Click the following link (or enter part number in "SEARCH" on website) to obtain additional part information including price, inventory and certifications: [SMA SPST PIN Diode Switch Operating From 2 GHz to 26.5 GHz Up To +30 dBm PE71S2015](#)

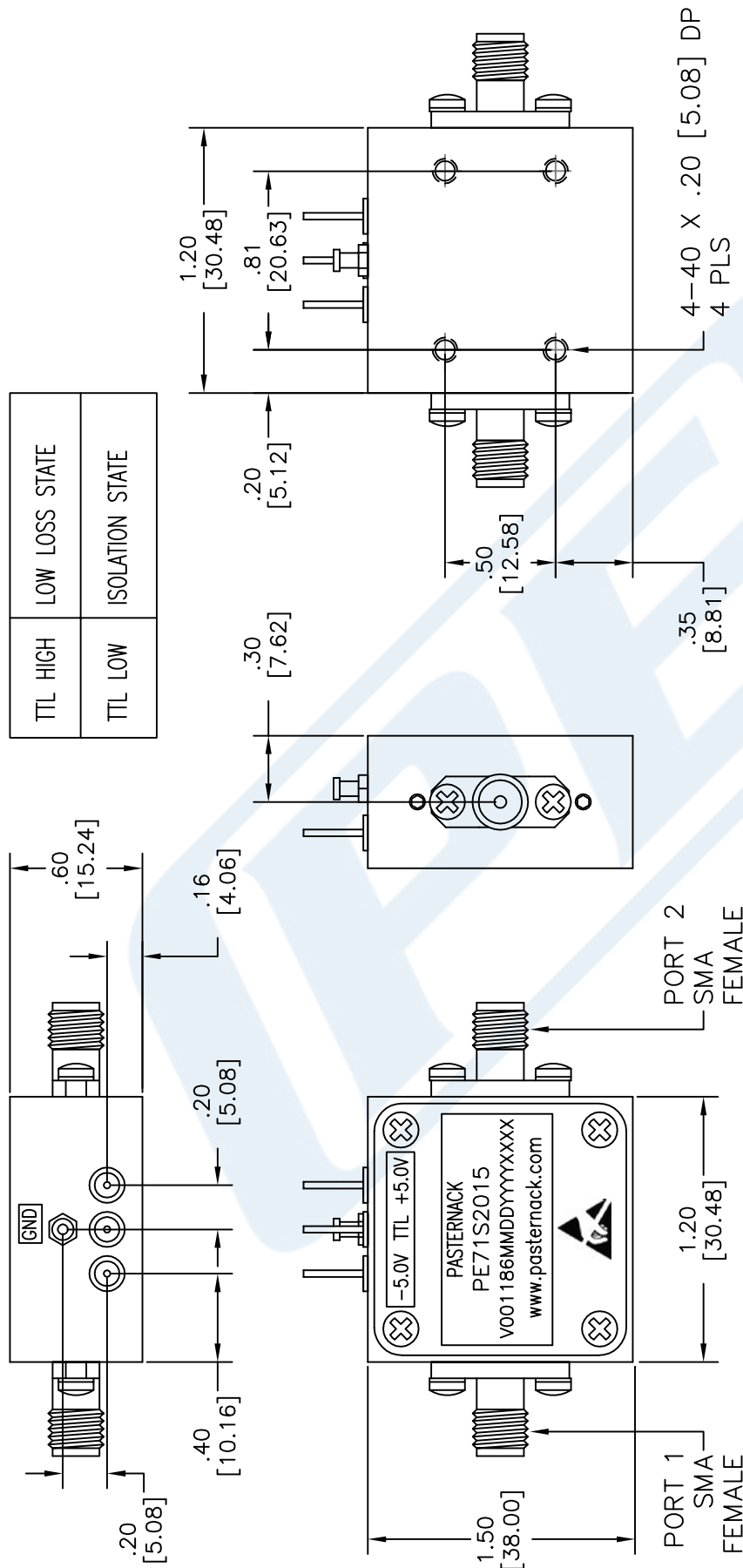




# PE71S2015 CAD Drawing

SMA SPST PIN Diode Switch Operating From 2 GHz to 26.5 GHz Up To +30 dBm

TTL HIGH	LOW LOSS STATE
TTL LOW	ISOLATION STATE



UNLESS OTHERWISE SPECIFIED:  
 DIMENSIONS ARE IN: inches [mm]  
 TOLERANCES ARE: .XX ± .01 [±.25]  
 .XX ± .001 [±.025]

\* THESE DIMENSIONS AND TOLERANCES SUPERSEDE NOTE #1 ON TITLE BLOCK.

NOTES:

1. UNLESS OTHERWISE SPECIFIED ALL DIMENSIONS ARE NOMINAL.
2. ALL SPECIFICATIONS ARE SUBJECT TO CHANGE WITHOUT NOTICE AT ANY TIME.
3. DIMENSIONS ARE IN INCHES [mm].
4. FITS MIL-C-17 AND EQUIVALENT CABLES.

DWG TITLE

**PE71S2015**



Pasternack Enterprises, Inc.  
 P.O. Box 16759 | Irvine | CA | 92623  
 Phone: (949) 261-1920 | Fax: (949) 261-7451  
 Website: www.pasternack.com | E-Mail: sales@pasternack.com

FSCM NO. 53919

CAD FILE 081815

SCALE N/A

SIZE A

2233