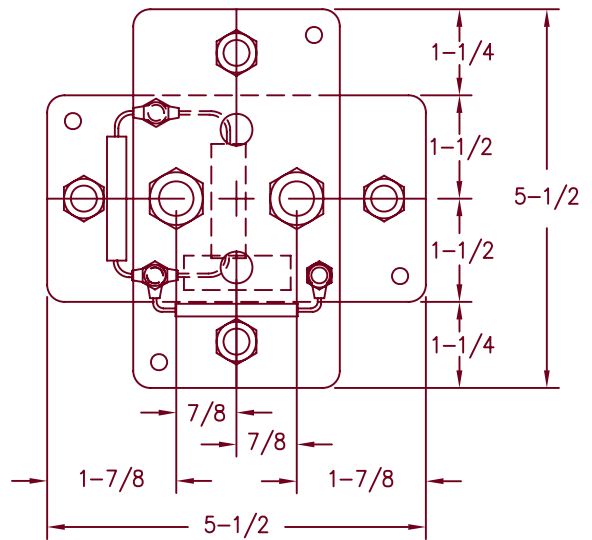
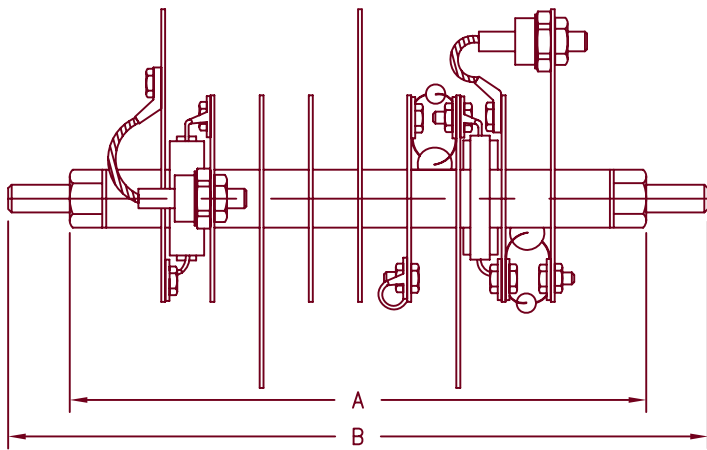


High Voltage Rectifier Assembly LHV43 Series



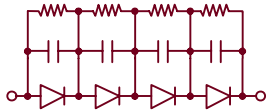
Mounting: Horizontal (convection cooling)

Horizontal or vertical (forced air or oil)

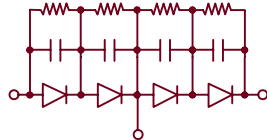
DC output rating— 32 Amps/25°C convection cooled
 — 70 Amps/40°C forced air cooled
 @ 1000 LFM

— 100 Amps/40°C oil cooled

Peak Reverse voltage— from 8KV to 80KV



H = Halfwave



D = Doubler

- Single Phase Halfwave Or Doubler
- Aluminum Heatsinks
- Each Diode is R-C Compensated
- 2500 Amperes Surge Current (1 Cycle)
- Resistive - Inductive Load. Derate 20% for Capacitive Loads

CATALOG NUMBER	PRV RATING KV	DIMENSION A	DIMENSION B
LHV43*8	8	10-1/8	12-1/4
LHV43*12	12	13-5/8	15-3/4
LHV43*16	16	17-1/8	19-1/4
LHV43*20	20	20-5/8	22-3/4
LHV43*24	24	24-1/8	26-1/4
LHV43*28	28	27-5/8	29-3/4
LHV43*32	32	31-1/8	33-1/4
LHV43*36	36	34-5/8	36-3/4
LHV43*40	40	38-1/8	40-1/4
LHV43*44	44	41-5/8	43-3/4
LHV43*48	48	45-1/8	47-1/4

*Add H or D For doublers add 1" to both dimensions A & B



6 Lake Street
 Lawrence, MA 01841
 PH: (978) 620-2600
 FAX: (978) 689-0803
 www.microsemi.com

04-24-07 Rev. 2

LHV43

