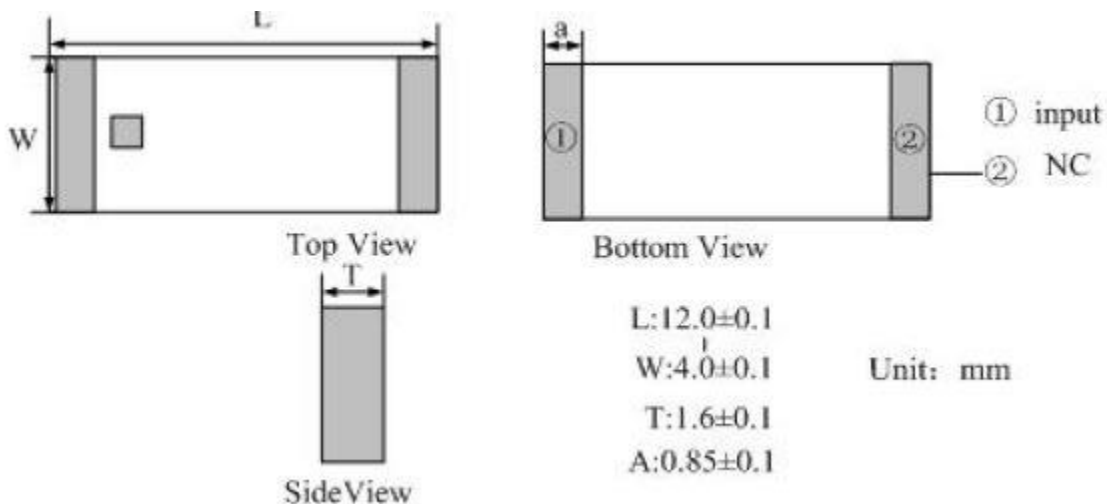
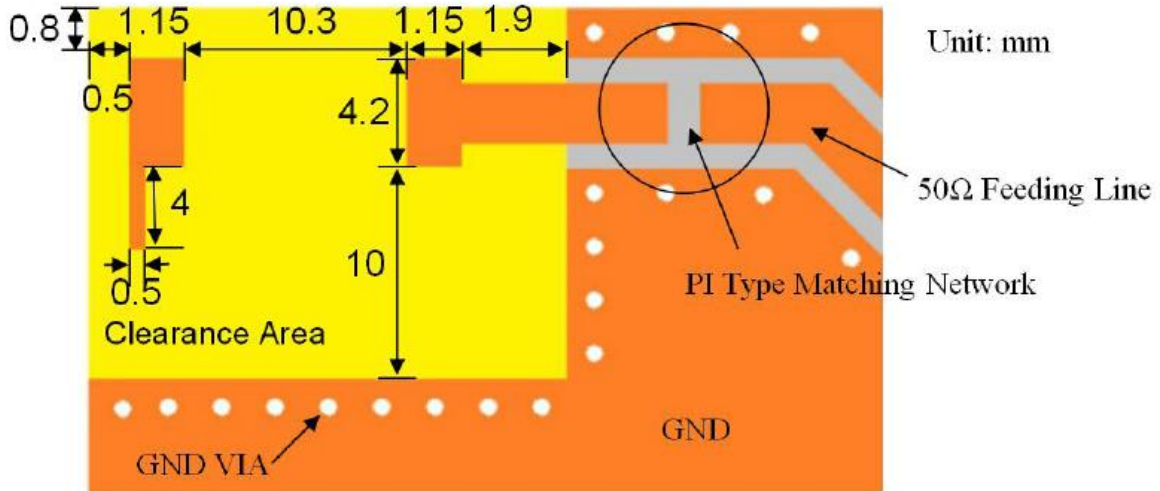


ELECTRICAL SPECIFICATION

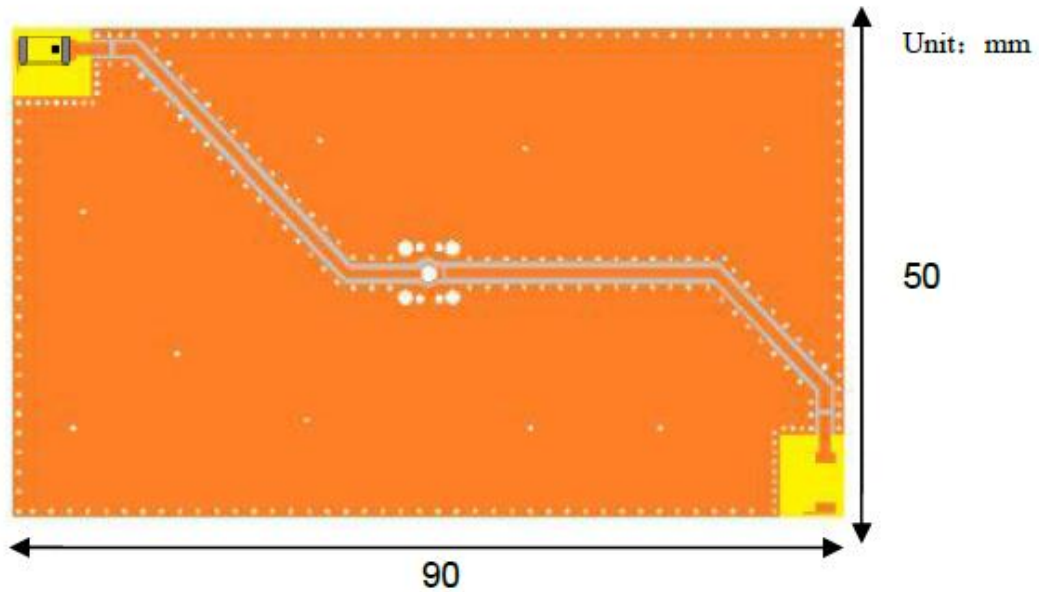
PARAMETERS	SPECIFICATIONS	UNIT
Center Frequency	868	MHz
Band Width, typ	20	MHz
Peak Gain	2.63	dBi
Impedance	50	Ω
VSWR, max	2.0	-
Polarization	Linear	-
Azimuth Beam Width	Omni-directional	-
Operating Temperature Range	-40 ~ +85	$^{\circ}\text{C}$
Storage Temperature Range	-40 ~ +85	$^{\circ}\text{C}$

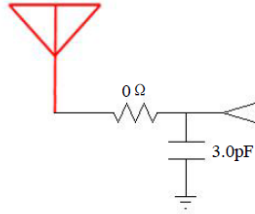
MECHANICAL SPECIFICATION



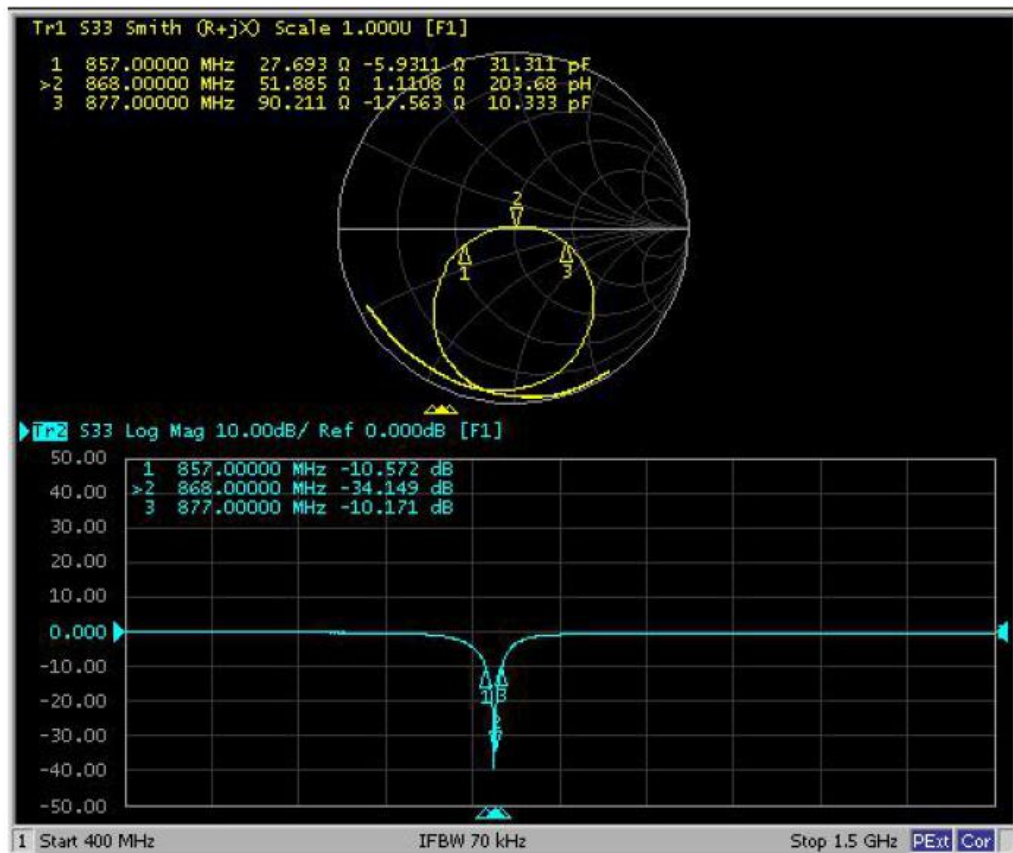


■ EVALUATION BOARD AND MATCHING CIRCUIT



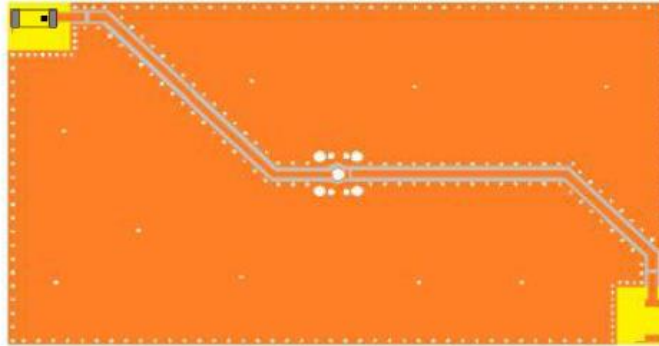
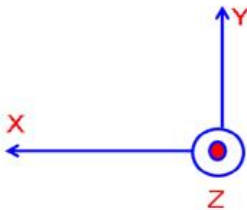


FREQUENCY CHARACTERISTICS

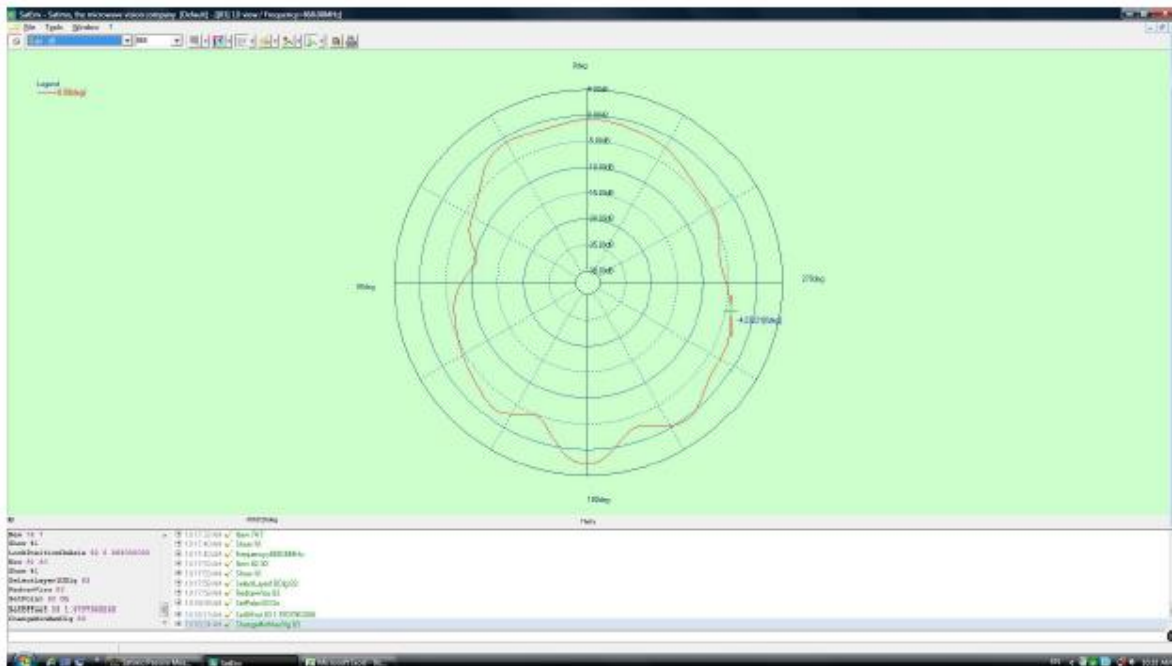


RADIATION PATTERN AND EFFICIENCY

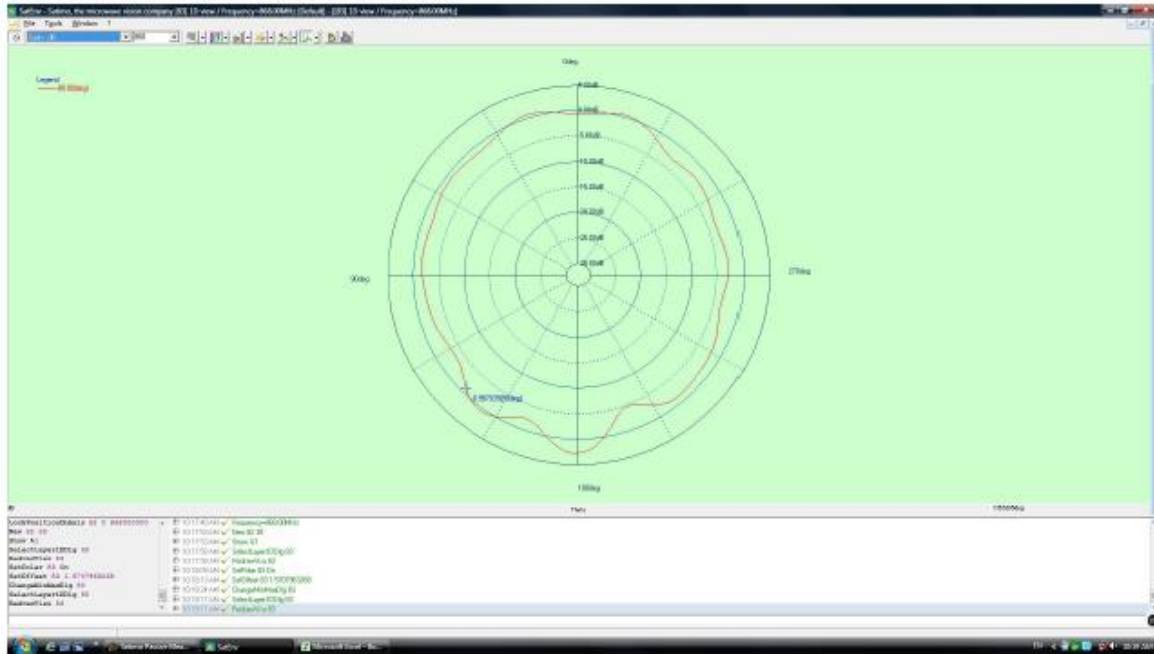
coordinates:



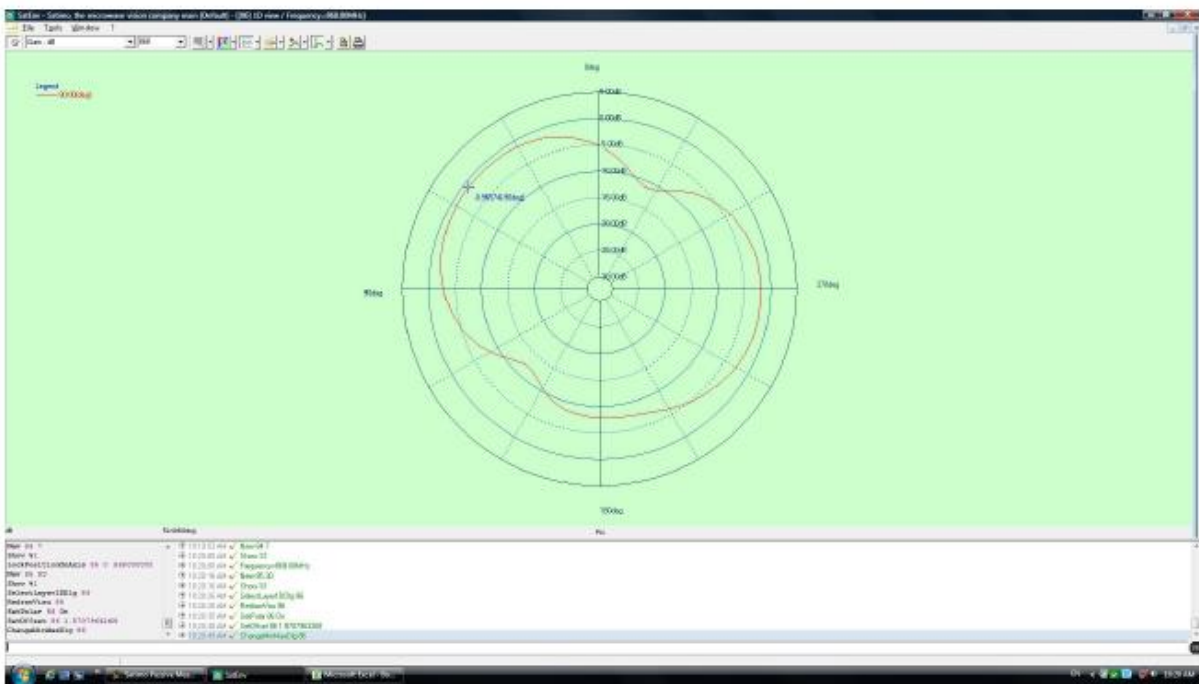
X-Z Plane



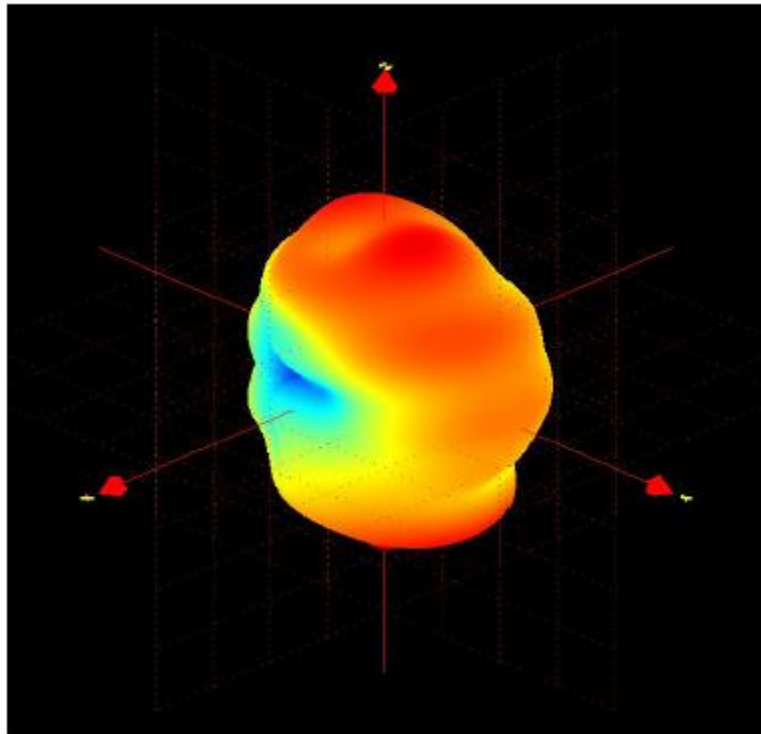
Y-Z Plane



X-Y Plane



3D Radiation Pattern



PARAMETERS	VALUES			UNIT
Frequency	858	868	878	MHz
Average Gain	-2.68	-2.05	-2.72	dBi
Peak Gain	2.35	2.63	2.26	dBi
Efficiency	48	52	50	%

May, 2016