

High Frequency Ceramic Solutions

3.3 - 3.7 GHz WiMAX BPF

P/N 3600BP14M0600

Detail Specification: 12/16/08

Page 1 of 2

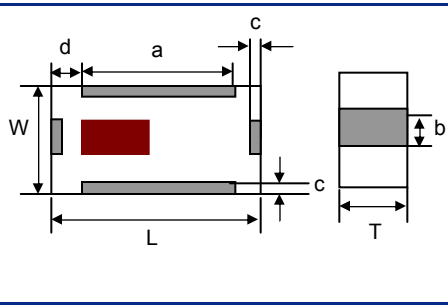
General Specifications

Part Number	3600BP14M0600	
Frequency (MHz)	3300 - 3700	
Insertion Loss	1.8 dB max @ 25°C	
	2.0 dB max @ -40 ~ 85°C	
Return Loss	12 dB min.	
Attenuation (min.)	806 ~ 915MHz	30 dB
Attenuation (min.)	1710 ~ 1785MHz	30 dB
Attenuation (min.)	1850 ~ 1910MHz	30 dB
Attenuation (min.)	1920 ~ 1980MHz	30 dB
Attenuation (min.)	2400 ~ 2500MHz	31 dB
Attenuation (min.)	4900 ~ 5900MHz	18 dB

Input Power	2W max .
Impedance	50 Ω
Operating Temperature	-40 to +85°C
Storage Temperature	-40 to +85°C
Reel Quantity	4,000

Mechanical Dimensions

	In	mm
L	0.063 ± 0.004	1.60 ± 0.10
W	0.031 ± 0.004	0.80 ± 0.10
T	0.022 ± 0.004	0.55 ± 0.10
a	0.028 ± 0.006	0.70 ± 0.15
b	0.012 ± 0.004	0.30 ± 0.10
c	0.006 ± 0.004	0.15 ± 0.10
g	0.018 ± 0.006	0.45 ± 0.15



Terminal Configuration

No.	Function
1	GND
2	I/O
3	GND
4	I/O

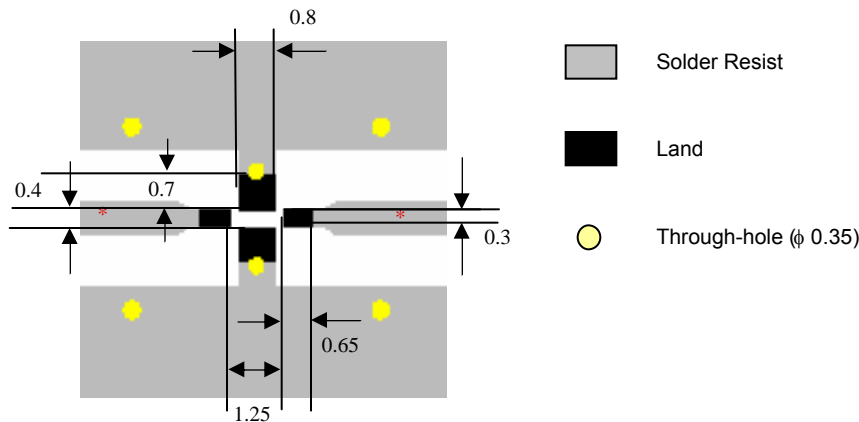
The diagram shows a rectangular component with four terminals. Terminal 1 is at the top, terminal 2 is on the right, terminal 3 is at the bottom, and terminal 4 is on the left. A red square is located in the center of the component.

Mounting Considerations

Mount these devices with brown mark facing up.

* Line width should be designed to provide 50Ω impedance matching characteristics.

Units: mm



Johanson Technology, Inc. reserves the right to make design changes without notice.

All sales are subject to Johanson Technology, Inc. terms and conditions.



www.johansontechology.com

4001 Calle Tecate • Camarillo, CA 93012 • TEL 805.389.1166 FAX 805.389.1821

2007 Johanson Technology, Inc. All Rights Reserved

High Frequency Ceramic Solutions

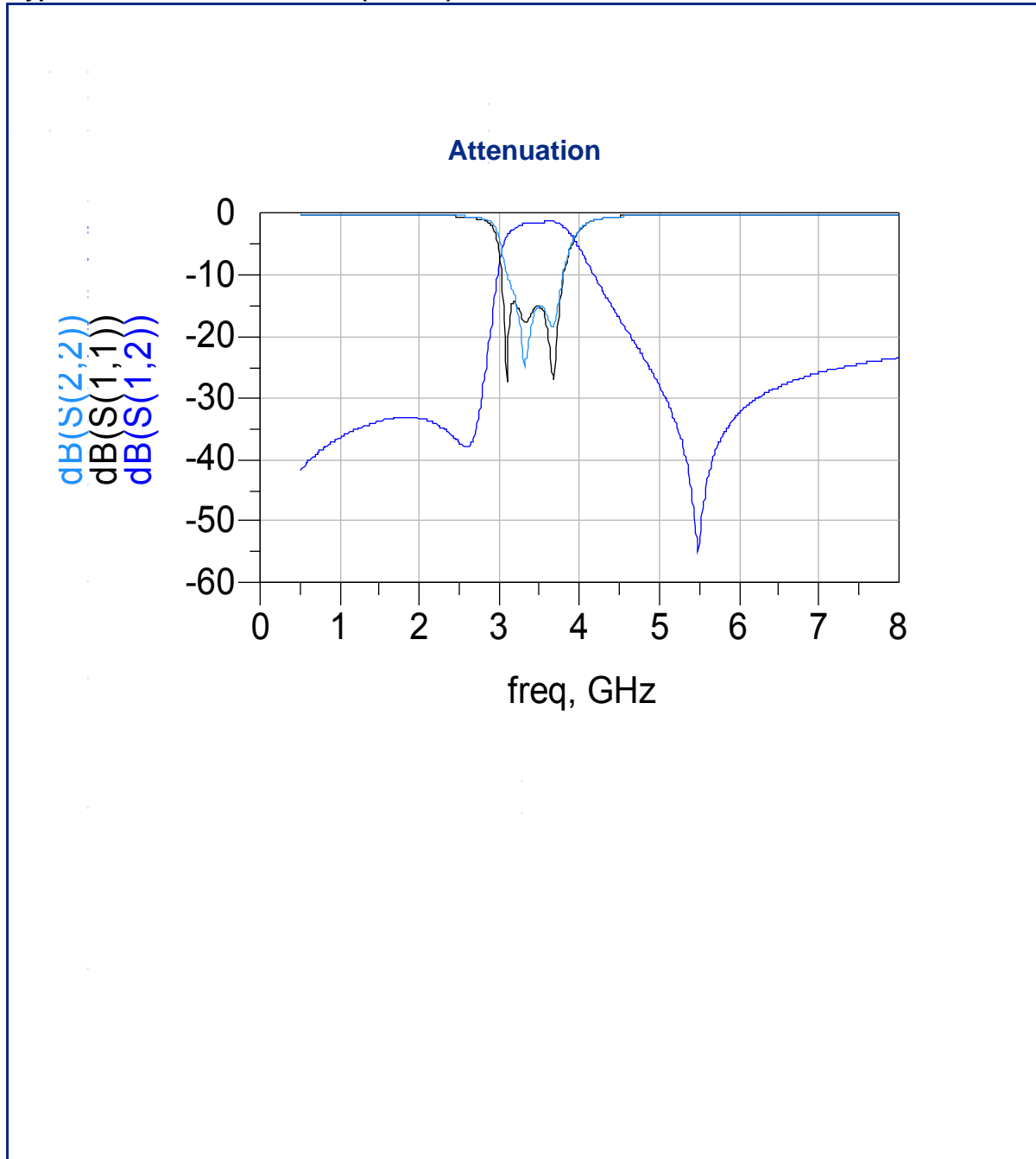
3.3 - 3.7 GHz WiMAX BPF

P/N 3600BP14M0600

Detail Specification: 12/16/08

Page 2 of 2

Typical Electrical Performance (T=25°C)



Johanson Technology, Inc. reserves the right to make design changes without notice.

All sales are subject to Johanson Technology, Inc. terms and conditions.



www.johansontechnology.com

4001 Calle Tecate • Camarillo, CA 93012 • TEL 805.389.1166 FAX 805.389.1821

2007 Johanson Technology, Inc. All Rights Reserved