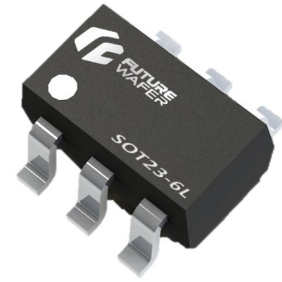
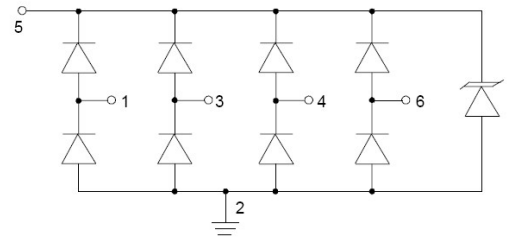


Applications

- Personal Digital Assistance
- Wireless System
- DVI
- High Speed Data Line
- Ethernet
- USB 2.0 Power and Data line Protection


SOT23-6L
Feature

- With TVS Diode
- ESD Protection:Level 4
- Low clamping voltage
- 350 Watts peak pulse power per line(tp=8/20uS)
- Ultra low capacitance:3pf max.(any I/O to GND.)
- Protection 4 lines I/O port


IEC Compatibility

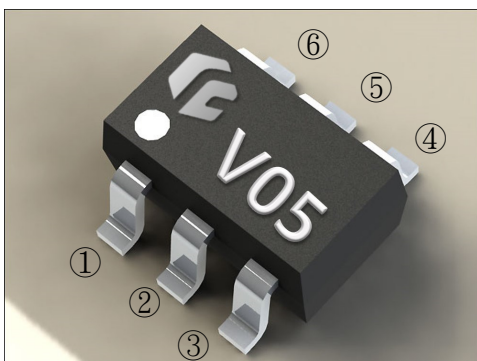
- EN61000-4
- 61000-4-2(ESD):Level 4,Contact:±8kv,Air:±15kv
- 61000-4-4(EFT):40A-5/50ns
- 61000-4-5(Surge):12A,8/20us

Mechanical Characteristics

- Molded JEDEC SOT23-6L package
- Packing: Tape and Reel
- Flammability rating UL 94V-0
- Halogen Free

Device Characteristics
Maximum Ratings@25 unless otherwise specified

Parameter	Symbol	Value	Units
Peak pulse power (tp=8/20us) see fig 1.	PPP	350	Watts
Operating Temperature	TJ	-55~150	°C
Storage Temperature	TSTG	-55~150	°C
Peak Pulse Current(tp=8/20us)	IPP	12	A
Electrostatic Discharge	VESD	>8(Contact) >15(Air)	KV



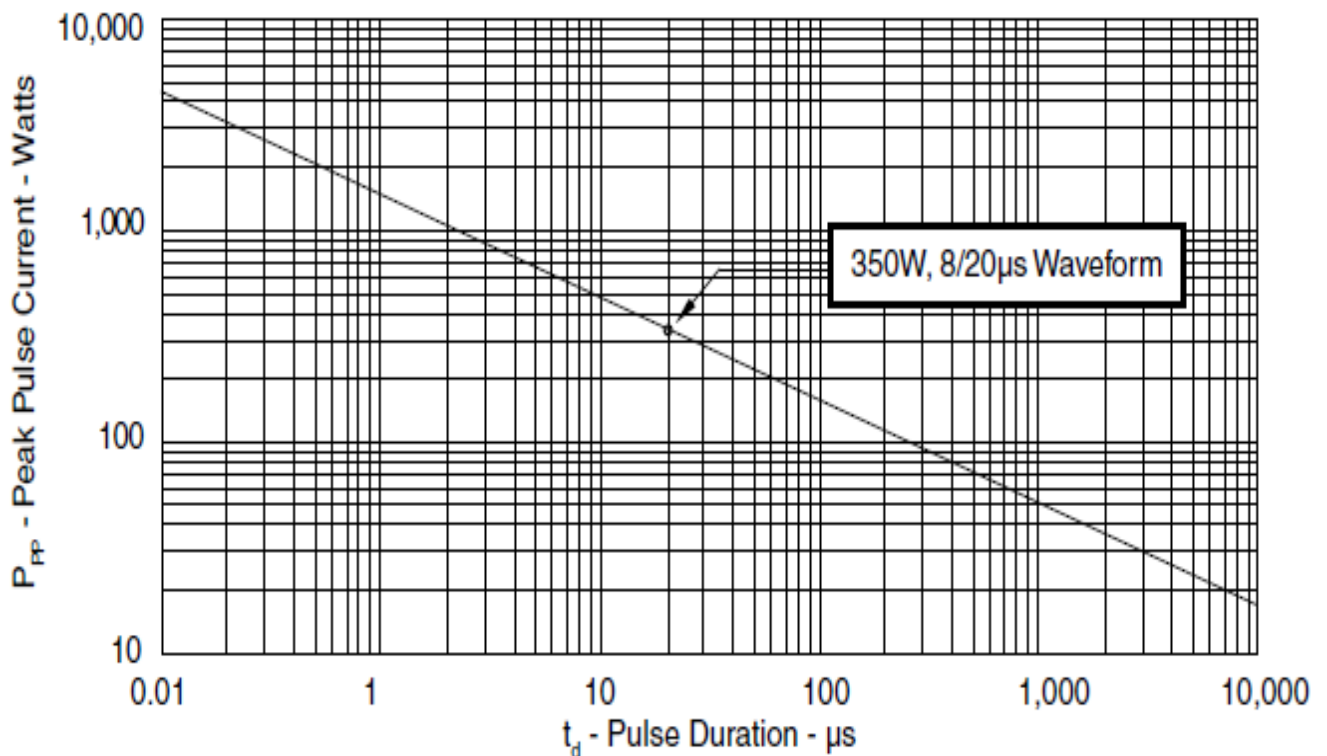
Pin	Identification
1,3,4,6	Input lines
5	Vcc IN
2	Ground

Electrical Characteristics

Parameter	Symbol	Condition	Min.	Typ.	Max.	Units
Reverse Stand-off Voltage	VRWM	Pin 5 to 2			5	V
Reverse Breakdown Voltage	VBR	I _Z =1mA Pin5 to 2	6.1		8.5	V
Reverse Leakage Current	I _R	Pin 5 to Pin 2.			5	uA
Forward Voltage	V _F	I _F =15mA			1.15	V
Clamping Voltage	V _C	I _{PP} =1A t _p =8/20us			12	V
		I _{PP} =12A t _p =8/20us			30	V
Junction Capacitance	C _{I/O}	Pin capacitance to GND.V _{dc} =0V,f=1MHZ		3	5	pf
Junction Capacitance	C _{I/O-I/O}	V _{dc} =0V,f=1MHZ		1.5		pf

Rating and characteristic curve

**FIGURE 1
PEAK PULSE POWER VS PULSE TIME**



Electrical Characteristics

FIGURE 2
Clamping Voltage VC Map Pin5 to 2

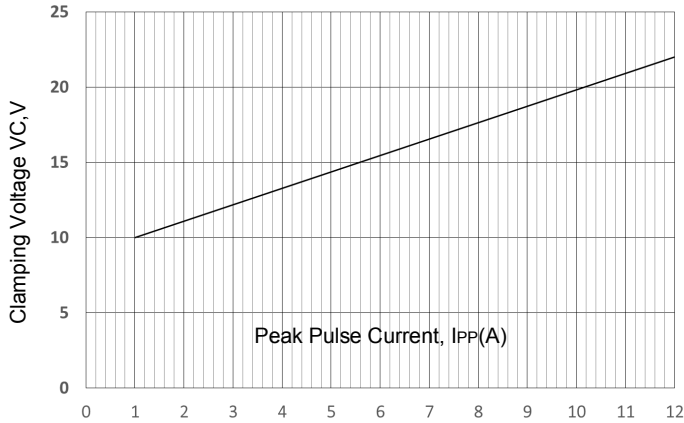


FIGURE 3
Normalized Capacitance vs. Reverse Voltage

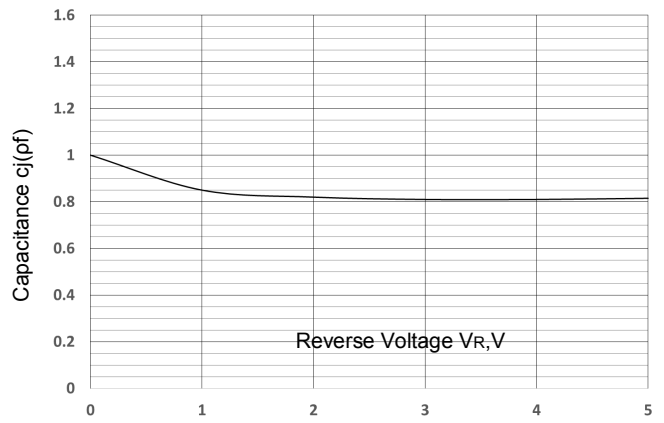


FIGURE 4
Pulse Wave Form

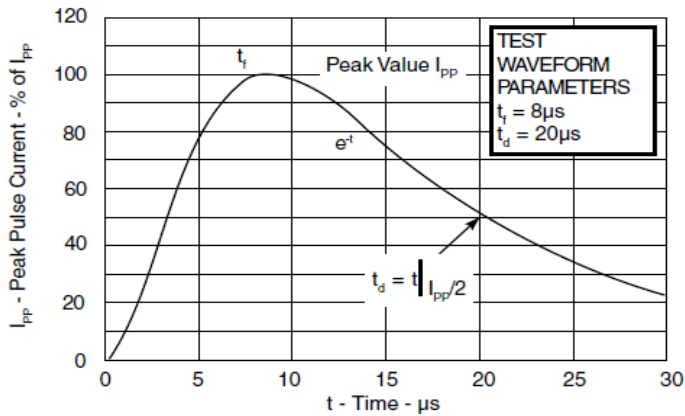


FIGURE 5
Power Derating Curve

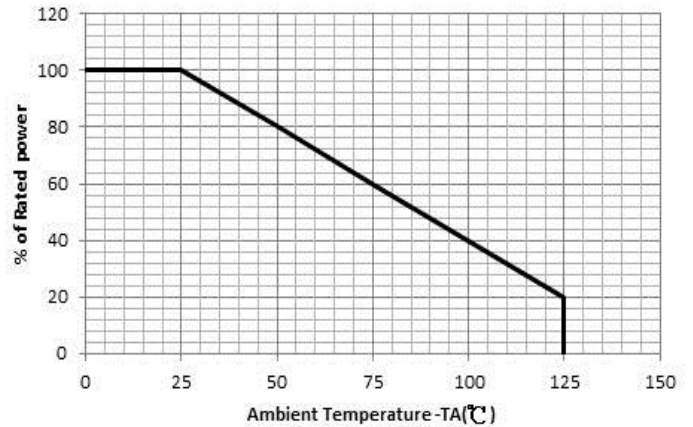


FIGURE 6
Breakdown Voltage VB Map Pin5 to 2

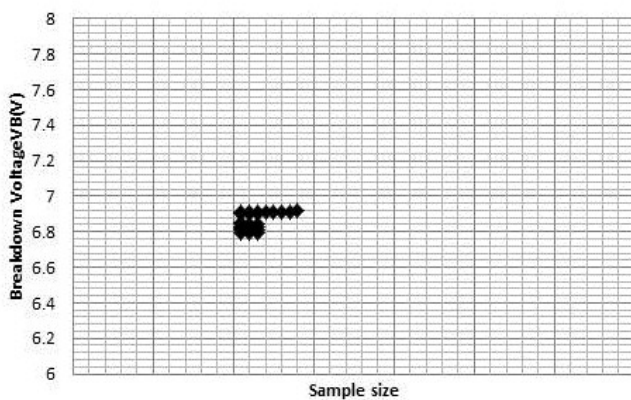
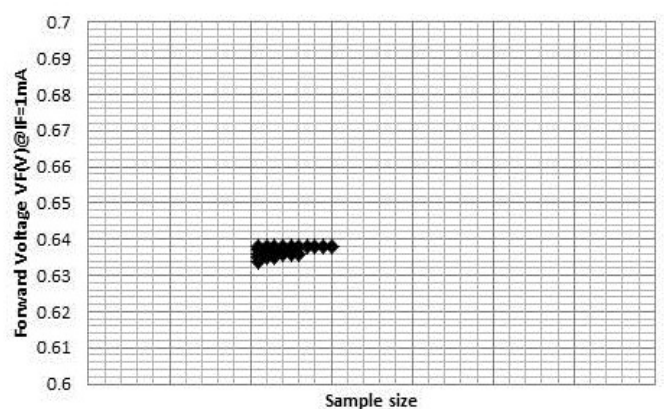
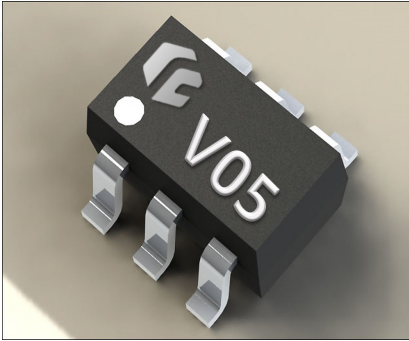


FIGURE 7
Forward Voltage VF Map Pin5 to 2



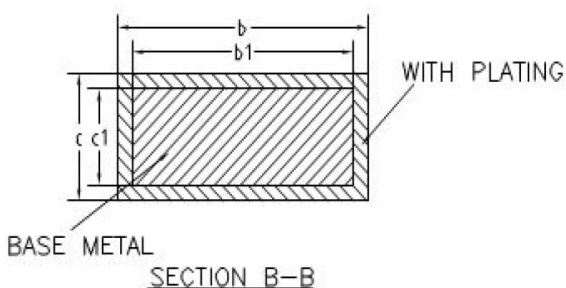
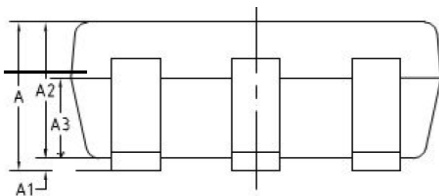
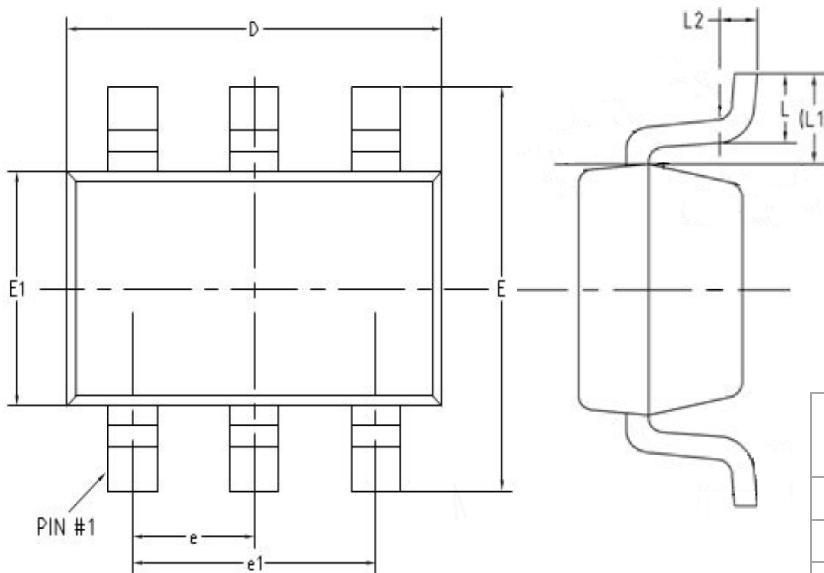
Ordering information

Marking codes



Part Number	Component Package	Quantity	Packaging Option
FSRV05-4	SOT23-6L	3,000	Tape&reel-8mm tape / 7"reel

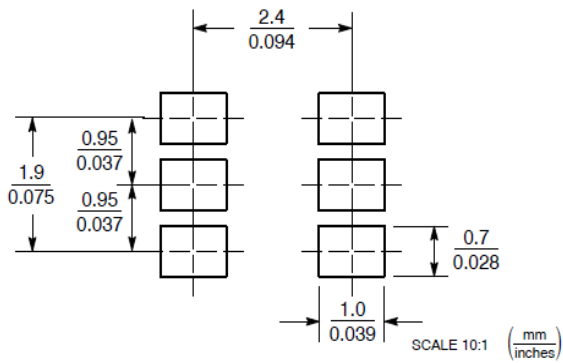
Package information



Symbol	Millimeters		
	MIN	NOM	MAX
A	-	-	1.30
A1	0.04	0.07	0.10
A2	1.05	1.10	1.15
A3	0.63	0.65	0.68
b	0.36	-	0.50
b1	0.36	0.38	0.45
c	0.14	-	0.20
c1	0.14	0.15	0.16
D	2.82	2.87	2.90
E	2.65	2.80	2.95
E1	1.56	1.62	1.64
e	0.93	0.95	0.98
e1	1.85	1.90	1.95
L	0.40	0.45	0.50
L1	0.59 REF		
L2	0.25 BSC		

Unit : mm

Pad Layout



Futurewafer Technology Co., Ltd 台灣未來芯航電股份有限公司

Tel : +886-3-3573583/Tel : +886-3-3574065

Futurewafer.com.tw

桃園市桃園區中正路 987 巷 50 弄 2 號