

16

1610 01

Power supply connectors

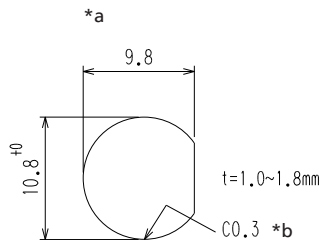
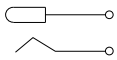
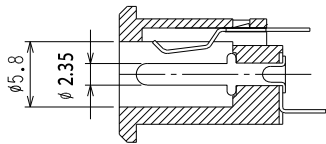
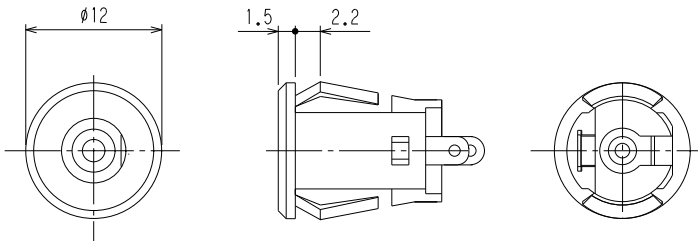
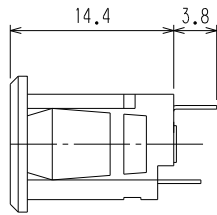


Power supply chassis socket, straight version, with solder eyes, for snap-in front side mounting

State: Active

16

1610 01



*a port in mounting plate
*b for metal plate

Environmental conditions

Temperature range -20 °C/+70 °C

Materials

Insulating body PA GF, HB according to UL94
Contact spring CuZn/CuSn, nickel-plated

Mechanical data

Diameter opening 5,8 mm
Diameter center pin 2,35 mm
Mating cycles ≥ 3000
Insertion force 4–30 N¹
Withdrawal force 4–30 N¹

¹ gemessen mit einem Lehrenstecker

Electrical data (at T_{amb} 20 °C)

Contact resistance $\leq 30 \text{ m}\Omega$
Rated current 1 A
Rated voltage 12 V DC
Rated impulse voltage 500 V/60 s
Insulation resistance $\geq 100 \text{ M}\Omega$

Associated products

Counterparts
 NES/J 25  NES/J 250  XNES/J 250

16

1610 01

Designation	Pole Number	PU (Pieces)	MDQ (Pieces)
1610 01	2	250	500

Packaging:

in bulk, in a cardboard box or a plastic bag