

15

1501 03

## Jack connectors



Jack chassis socket acc. to JIS C 6560 JC25J3A, 2.5 mm, 3 poles/stereo, angular version, for printed circuit board

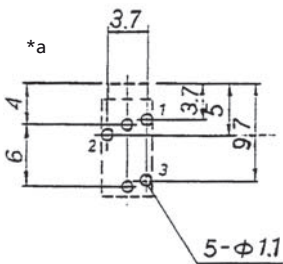
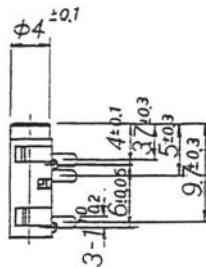
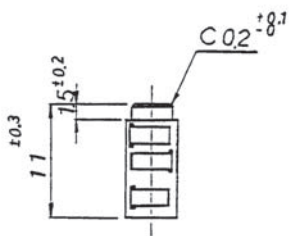
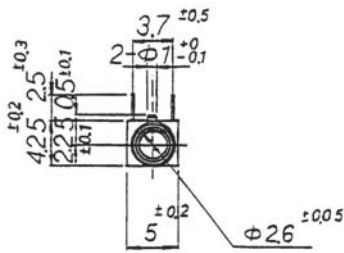
---

State: Active

---

15

1501 03



\*a printed circuit board layout, solder side view

#### Environmental conditions

Temperature range -20 °C/+70 °C

#### Materials

Insulating body PA GF, HB according to UL94  
Contact spring CuSn

#### Mechanical data

Mating cycles ≥ 5000  
Insertion force 5–20 N  
Withdrawal force 4–20 N

#### Electrical data (at T<sub>amb</sub> 20 °C)

Contact resistance ≤ 30 mΩ  
Rated current 0,5 A  
Rated voltage 34 V AC/DC  
Rated impulse voltage 500 V/60 s  
Insulation resistance ≥ 100 MΩ

#### Associated products

Counterparts  
☑ KLS 13

15

1501 03

Designation	Pole Number	PU (Pieces)	MDQ (Pieces)
1501 03	3	500	1000

**Packaging:**

in bulk, in a cardboard box or a plastic bag