

All Dimensions are in mm

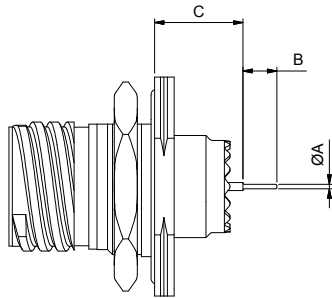
© AB Connectors Ltd. This document and the information contained herein may not be copied, used or disclosed, in whole or in part, without the prior written permission of AB Connectors Ltd. If this document has been obtained under a contract with another party an expressly authorized order that contract, it is supplied without liability for errors or omissions.

DRAWING FOR QUOTATION PURPOSES ONLY. NOT TO BE WORKED TO.

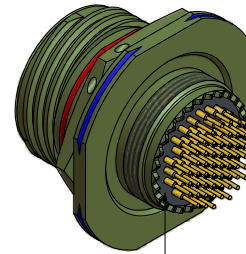
ISSUE: A
BY: AG
RN: N/A
DATE: 19/04/2011

ISSUE: B
BY: AG
RN: N/A
DATE: 19/04/2011

ISSUED BY	DATE	ISSUE	PROJECTION	ABAC.CDS.0011
AG	21/04/2011	B		



JAM NUT STYLE		
SHELL SIZE	C MIN	C MAX
9	12.21	13.36
11	12.21	13.36
13	12.32	13.34
15	12.32	13.34
17	12.21	13.36
19	12.01	13.16
21	13.01	14.16
23	13.01	14.16
25	13.03	14.16



RESIN FILLED

EXAMPLE PART NUMBER: ABAC 24 W 15 35 P N M12

PRODUCT SERIES

SHELL STYLE

FINISH

SHELL SIZE

INSERT ARRANGEMENT

CONTACT TYPE

P = PIN CONTACTS

S = SOCKET CONTACTS

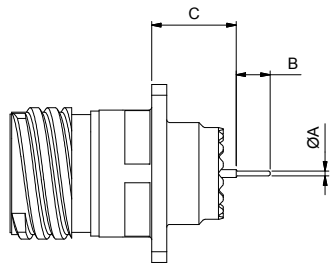
ORIENTATION

MOD CODE

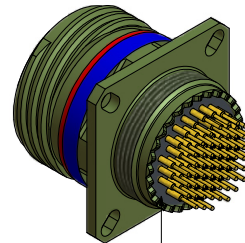
M12 = REAR OF CONNECTOR RESIN FILLED FOR PANEL SEALING APPLICATIONS. CONTACTS SUPPLIED PER M09 (SHORT TAIL VERSION), REFER TO CONTACTS TABLE FOR TAIL DIMENSIONS.

NOTES:

1. DIMENSIONS IN MILLIMETRES.
2. CONSULT FACTORY FOR REQUIREMENTS NOT LISTED.
3. REFER TO CATALOGUE OR MIL-DTL-38999 FOR PANEL CUT-OUT DETAILS.
4. MINIMUM SEALING CAPABILITY $10E^{-7}$ atm.cm³/s (He).
5. MAXIMUM SERVICE TEMPERATURE 150°C.



SQUARE FLANGE STYLE		
SHELL SIZE	C MIN	C MAX
9	10.49	11.63
11	10.49	11.63
13	10.49	11.63
15	10.49	11.63
17	10.49	11.63
19	10.49	11.63
21	10.49	11.63
23	10.49	11.63
25	10.51	11.63



RESIN FILLED

CONTACTS			
CONTACT SIZE	MOD CODE REF.	ØA	B
22D	M09	0.70	4.00
20	M09	0.70	5.10
16	M09	1.15	5.10

CHARACTERISTIC	SYM	CHARACTERISTIC	SYM
STRAIGHTNESS	—	ANGULARITY	∠
FLATNESS	▭	RUN-OUT	↗
ROUNDNESS	○	POSITION	⊕
CYLINDRICITY	∕	CONCENTRICITY	⊙
PROFILE OF A LINE	⌒	SYMMETRY	≡
PROFILE OF A SURFACE	⌒	M.M.C.	Ⓜ
PARALLELISM	∥	SQUARENESS	⊥

MATERIAL: N/A	∇ = CRITICAL CHARACTERISTIC ◊ = SIGNIFICANT CHARACTERISTIC (SEE AB-W07-03-01 FOR DESCRIPTION) this drawing
TOLERANCES UNLESS OTHERWISE STATED	DRAWN AG
ALL DECIMAL PLACES ± 0.1	DATE 18/04/2011
HOLE DIAMETERS ± 0.05	CHKD PL
ANGULAR ± 2'	

AB CONNECTORS LTD.
A TT GROUP COMPANY

THIS DRAWING MAY ONLY BE ALTERED IF THE PART REMAINS INTERCHANGEABLE. IF NOT, A NEW DRAWING NUMBER MUST BE TAKEN.

TITLE: FIXED CONNECTOR WITH PC TAILS AND PANEL SEALING	FINISH:
PRODUCT DRAWING NUMBER ABAC.CDS.0011	FINISH CODE: VARN