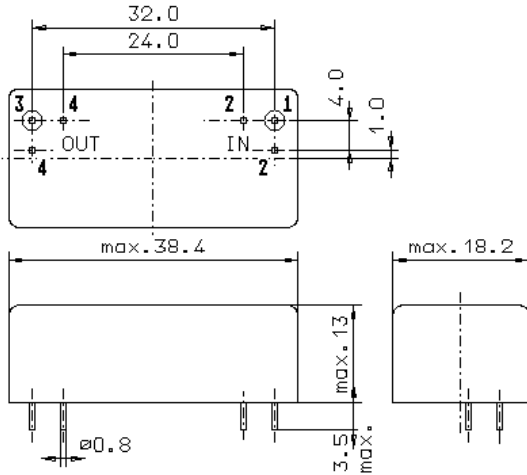


Specification for crystal filter:

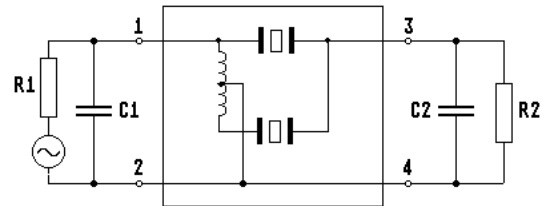
QF 45.0-20000/07

1. General

1.1. Package:



GM17



- | | |
|-----------------------------------|------------------|
| 1.2. Type name: | QF 45.0-20000/07 |
| 1.3. Number of poles: | 6 |
| 1.4. Operating temperature range: | -20°C to +70°C |
| 1.5. Storage temperature range: | -35°C to +85°C |

2. Electric values

- | | |
|---------------------------------------|----------|
| 2.1. Nominal centre frequency f_0 : | 45.0 MHz |
|---------------------------------------|----------|

2.2. Pass band

- | | |
|---|--|
| 2.2.1. Bandwidth between 3 dB - frequencies: | $\geq f_0 \pm 100$ kHz |
| 2.2.2. Ripple: | ≤ 2.0 dB at $f_0 \pm 75$ kHz |
| 2.2.3. Differential group delay : | ≤ 5.0 μ s at $f_0 \pm 75$ kHz |
| 2.2.4. Insertion loss: | ≤ 4.0 dB |
| (measured on smallest attenuation in pass band) | |

2.3. Stop band

- | | |
|--|--------------|
| 2.3.1. $f_0 \pm 190$ kHz | ≥ 20 dB |
| 2.3.2. $f_0 - 900$ kHz | ≥ 70 dB |
| 2.3.3. $f_0 \pm 1.7$ MHz | ≥ 80 dB |
| 2.3.4. Spurious responses at $f_0 + 190$ kHz...+2.5 MHz: | ≥ 30 dB |

- | | |
|---|---------------------|
| 2.4. Terminating impedance (input and output): | 50 Ω // 0 pF |
| 2.5. Input power level (working/without destruction): | +1dBm / +15 dBm |

- | | |
|-------------|---|
| 3. Marking: | manufacturer, date code
QF 45.0-20000/07 |
|-------------|---|

- | | |
|----------------------------|---|
| 4. Environment conditions: | Corresponding to Vectron standard CF001 |
|----------------------------|---|

Edited by: _____ date: _____ name: _____