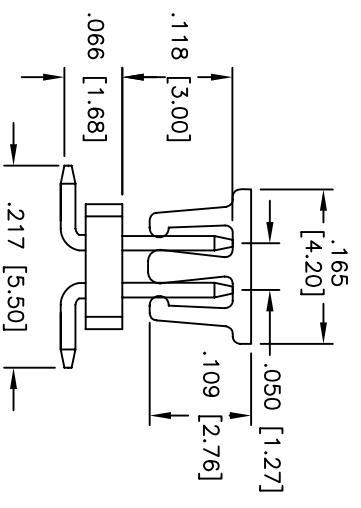
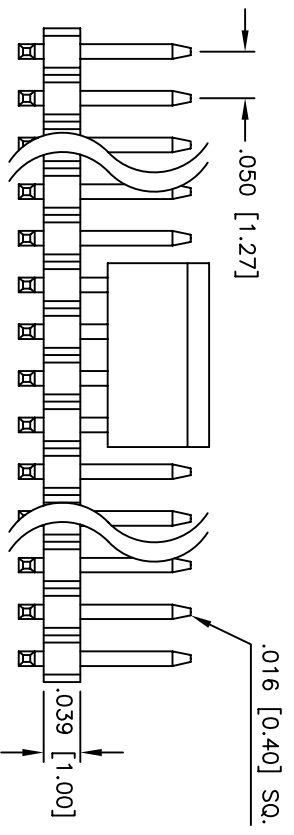
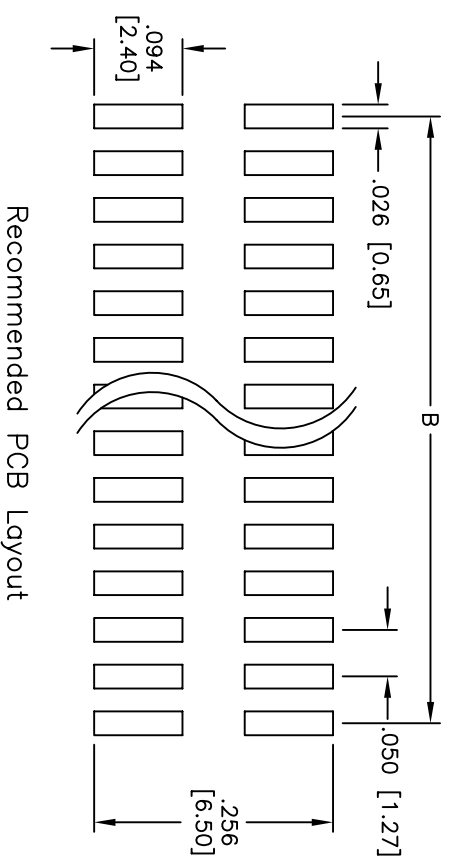
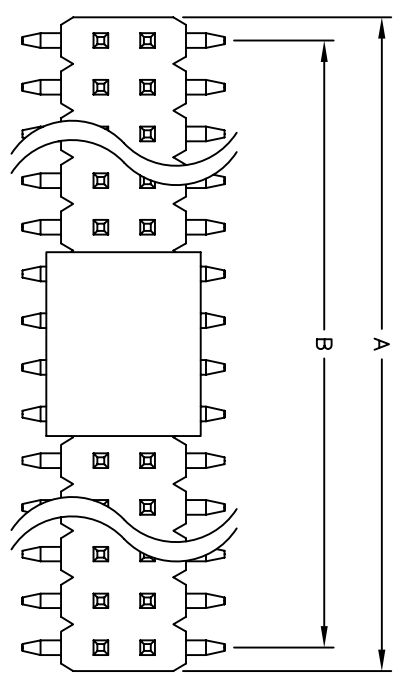


| Rev | AWO # | Description | Date | Appr |
|-----|-------|-------------|---------|------|
| - | | RELEASED | 7/14/08 | |

APPROVED: _____
 DATE: _____ TITLE: _____



SPECIFICATIONS:
 Material: Nylon 6T, glass reinforced, rated UL 94V-0
 Insulator color: Black
 Contacts: Brass
 Plating: Gold flash over Nickel underplate on contact area.
 Tin over copper underplate on tails.

PACKAGED ON TPAE & REEL

Positions: 8 thru 100
 A = .050 [1.27] x No. of Positions per Row
 B = .050 [1.27] x No. of Spaces

Electrical:
 Operating voltage: 250 VAC max
 Current rating: 3 Amps max
 Contact resistance: 20 mohms max
 Insulation resistance: 5,000 Mohms min @ 500 VDC
 Dielectric withstanding voltage: 1,000 VAC for 1 minute
 Temperature Rating: Operating temperature: -55°C to +105°C



Lead free, RoHS compliant
 Recommended soldering temp: 260°C for 5 seconds

ADAM TECH

909 Rahway Avenue, Union, NJ 07083
 Phone: 908-687-5000 Fax: 908-687-5710

TITLE: .050 [1.27] DUAL ROW PIN HEADER, SMT,
 PICK & PLACE GAPE, SELECTIVE GOLD PLATED

| | |
|---|-------------|
| UNLESS OTHERWISE SPECIFIED ALL DIMENSIONS ARE IN INCHES [MM] | |
| TOLERANCES: EXCEPT AS NOTED | |
| INCHES | HOLDS |
| .X ± .10 | ØX ± .10 |
| .XX ± .020 | ØXXX ± .015 |
| .XXX ± .015 | ØXXX ± .010 |
| APPROVALS | DATE |
| DRAWN DY | 7/14/08 |
| CHECKED | |
| APPROVED | |

| | | |
|------|-------------------------|--------------|
| SIZE | PART NO. | REV. |
| X | HPH2-A-XX-SGA-SMT-PP-TR | - |
| REF: | SCALE: NTS | SHEET 1 OF 1 |