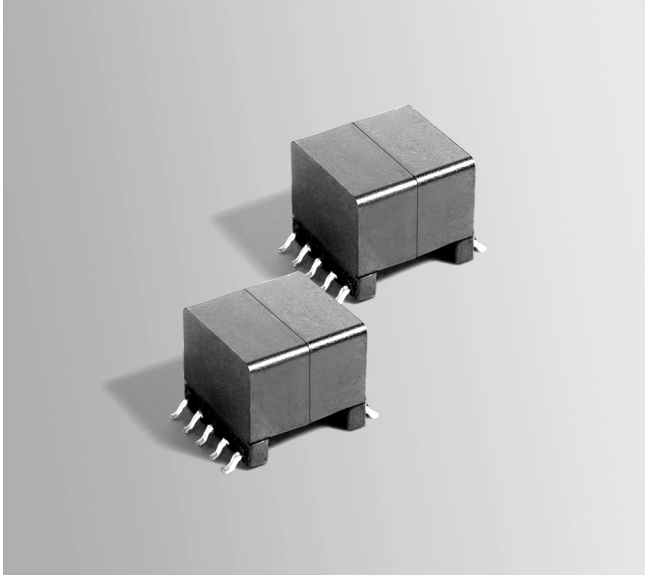




# Flyback Transformer

For Texas Instruments LM5001  
Switch Mode Regulator



- Developed for the Texas Instruments LM5001 High Voltage Switch Mode regulator for isolated and non-isolated flyback topologies.
- Output of the auxiliary winding is 7.5 V used to power the IC
- 1500 Vrms, one minute isolation from the primary and auxiliary winding to the secondary

**Core material** Ferrite

**Terminations** RoHS tin-silver over tin over nickel over phos bronze.

**Weight** 6.28 g

**Ambient temperature** -40°C to +85°C

**Storage temperature** Component: -40°C to +85°C.

Tape and reel packaging: -40°C to +80°C

**Resistance to soldering heat** Max three 40 second reflows at +260°C, parts cooled to room temperature between cycles

**Moisture Sensitivity Level (MSL)** 1 (unlimited floor life at <30°C / 85% relative humidity)

**Failures in Time (FIT) / Mean Time Between Failures (MTBF)**

38 per billion hours / 26,315,789 hours, calculated per Telcordia SR-332

**Packaging** 175 per 13" reel Plastic tape: 32 mm wide, 0.5 mm thick, 32 mm pocket spacing, 12.98 mm pocket depth

**PCB washing** Only pure water or alcohol recommended

Part number <sup>1</sup>	Inductance at 0 A <sup>2</sup> ±10% (µH)	Inductance at I <sub>pk</sub> <sup>3</sup> min (µH)	DCR max (Ohms) <sup>4</sup>			Leakage inductance max (µH) <sup>5</sup>	Turns ratio <sup>6</sup>		I <sub>pk</sub> <sup>3</sup> (A)	Output
			pri	bias	sec		pri : sec	pri : aux		
FA2636-AL_	160	144	0.225	0.340	0.078	1.60	8 : 2	8 : 3	1.0	5.0 V, 1.0 A

1. When ordering, please specify **packaging** code:

**FA2636-ALD**

**Packaging:** D = 13" machine-ready reel. EIA-481 embossed plastic tape (175 parts per full reel).

B = Less than full reel. In tape, but not machine ready. To have a leader and trailer added (\$25 charge), use code letter D instead.

2. Inductance is for the primary, measured at 250 kHz, 0.2 Vrms, 0 Adc.

3. I<sub>pk</sub> is peak primary current drawn at minimum input voltage.

4. DCR for the secondary is per winding.

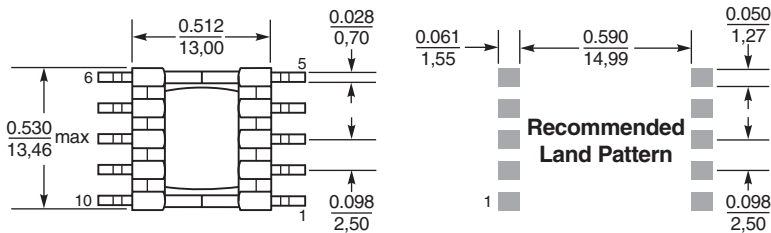
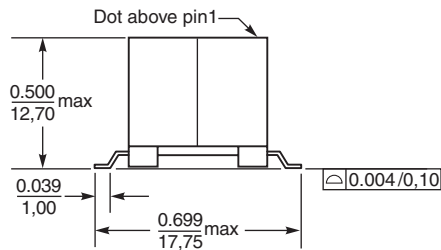
5. Leakage inductance measured between pins 3 and 2 with all other pins shorted.

6. Turns ratio is with the secondary windings connected in parallel.

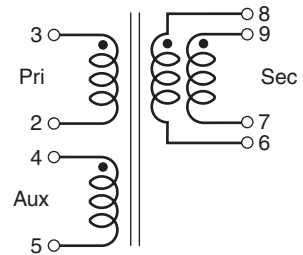
7. Operating temperature range -40°C to +85°C.

8. Electrical specifications at 25°C.

Refer to Doc 362 "Soldering Surface Mount Components" before soldering.



Dimensions are in inches / mm



Secondary windings to be connected in parallel on the PC board.



www.coilcraft.com

**US** +1-847-639-6400 sales@coilcraft.com  
**UK** +44-1236-730595 sales@coilcraft-europe.com  
**Taiwan** +886-2-2264 3646 sales@coilcraft.com.tw  
**China** +86-21-6218 8074 sales@coilcraft.com.cn  
**Singapore** + 65-6484 8412 sales@coilcraft.com.sg

Document 594 Revised 09/03/08

© Coilcraft Inc. 2013

This product may not be used in medical or high risk applications without prior Coilcraft approval. Specification subject to change without notice. Please check web site for latest information.