

DSS-4270PFA/ 4250PFA

42" All-in-One Digital Signage Station

NEW



Features

- 42" LCD supports 1920 x 1080p FHD resolution & 4000:1 contrast ratio
- Ultra high brightness, 700 nits for sunlight environment
- Wide viewing angle supports 89/89/89/89° C
- Operating temperature (-0 ~ 45°C)
- Intel® Core™2 Duo Core CPU board support
- Plug & Play modular system design
- Integrated touch panel technology
- IP 55 front bezel design
- Extended 10 watt speaker
- Rugged aluminum frame design
- Web based remote control for downloading content and control
- Auto-detection & hardware diagnostics for easy troubleshooting
- Full range of wireless optional modules
- Fully integrated with major interactive tools



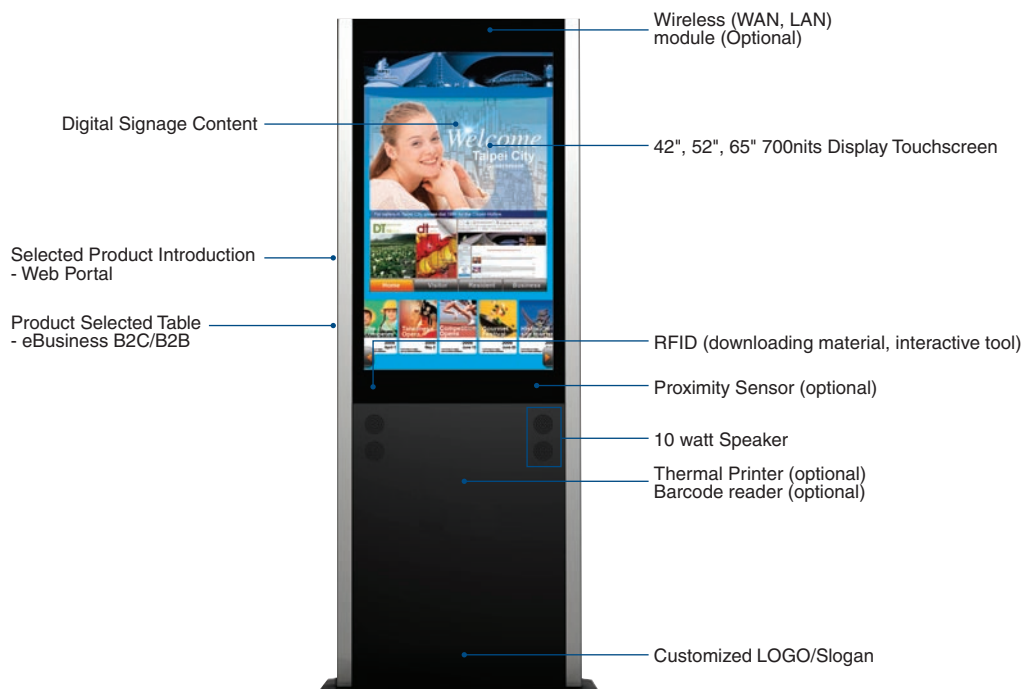
Introduction

Digital Signage Station (DSS) series is an extraordinary "All-in-One" system specially designed for high end interactive public signage kiosk solutions, especially for middle and large scale public signage networks. DSS is a new communication tool using standard formats to present public and commercial information. DSS is designed for Digital Signage and Digital Advertising in interactive signage and web service applications. DSS series has 42", 52" and 65" LCD panels which have been specially integrated with industrial PCs and touch screens (with optional proximity sensors), and wireless connection (LAN and WAN), to deliver dynamic communications to the public. DSS satisfies the public thirst for instant information, text, messages, sounds, and video. DSS presents engaging visual information and guides to the best routes for visitors, advise about available products and offers, interesting people and places, as well as advertising and information that could help visitors navigate around public venues.

Inside DSS there's an integrated IPC that manages the content (slide shows, clips, videos, movies, text etc), which can be loaded and downloaded through the built-in wireless (WiFi, Blue-tooth, GPRS/UMTS, GPS, HSDPA, WiMax) connections, and/or via cable to the Internet or simply through direct access. The DSS series is a product that can be placed in any indoor and semi-outdoor area, and the front cabinet meets IP55 certification for dust and water protection. The front screen can be fitted with either tempered (vandalproof) glass to prevent damage, or with a rugged touch panel, and the front bezel design can be personalized with the customers own logo, color or image. For the the latest exciting urban signage solution, look no further than DSS.

DSS Hardware & Software Scenarios

Interactive Content



Target Market and Scenarios



Retail



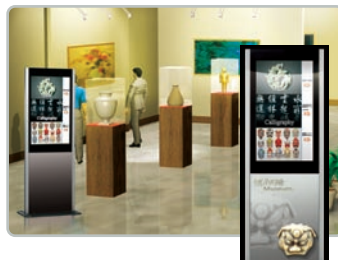
Hotel



Restaurant



Enterprise



Exhibition



Public & Government

Installation Flexibility

DSS was designed with a compatible aluminum and metal base station which can easily convert Digital Signage Displays into either a Portrait or Landscape floor-stand Digital Signage Station.

Portrait floor-stand:

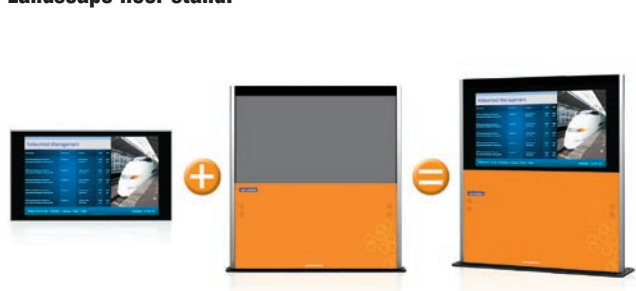


Standalone Model

Station Mounting Kits

iSign Station Model

Landscape floor-stand:



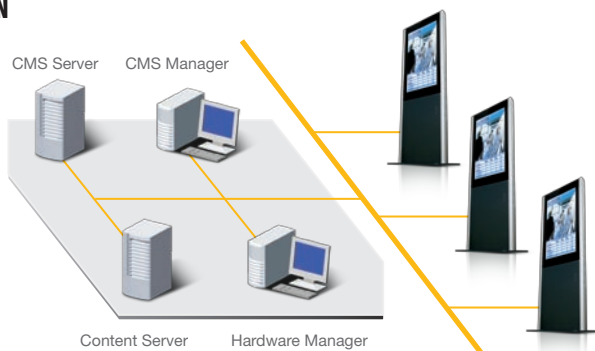
42", 56", 65" Full HD LCD Panel

Various metal frames, stations and visual designs

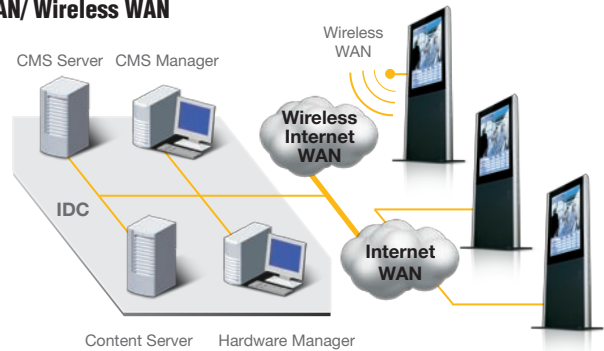
Your dedicated Web 2.0 iSign Station

DSS Network

LAN



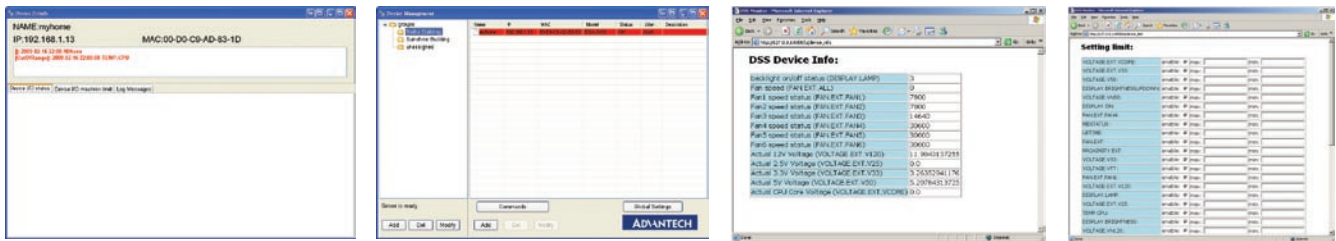
WAN/ Wireless WAN



DSS Hardware System Web-remote Management

Advantech DSS Hardware Web-remote management software is a powerful online hardware diagnostic tool which is designed for system managers to check the status of DSS hardware status online. Each DSS has an individual IP for system managers to check the LCD, system PC, system fans and can even power on or off the system over the internet. If any DSS hardware is damaged, engineers can easily identify the damage status online and schedule any replacement parts.

- Display backlight damage detection
- Fan speed control by pre-defined duty cycle
- Thermal sensor, RS232 and motherboard status control
- System boot up/shut down control
- OSD & dimming remote control
- Web based reporting for all the DSS located in all difference locations
- Additional server edition manger program available



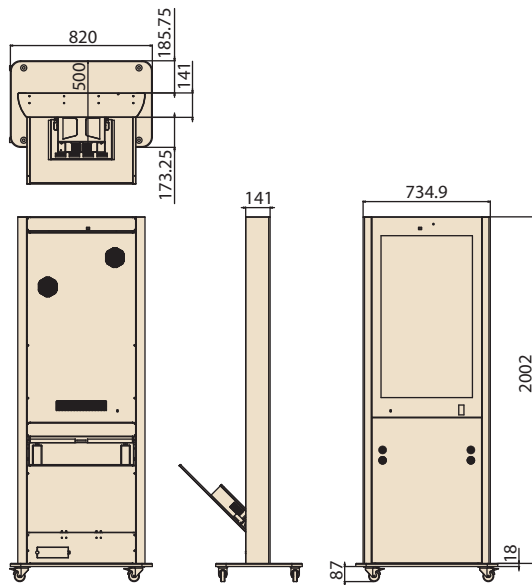
Specifications

Title	DSS-4250 Series	DSS-4270 Series	
LCD Specification	Screen Size	42"(16:9)	42"(16:9)
	Active Display Area (mm)	930mm (H) x 523.26mm (V)	930mm (H) x 523.26mm (V)
	Pixel Pitch (mm)	0.4845mm (H) x 0.4845mm (V)	0.4845mm (H) x 0.4845mm (V)
	Display Resolution (pixel)	1920 x 1080	1920 x 1080
	Contrast Ratio	4000:1 (typ.)	4000:1 (typ.)
	Display Color	16.7M (8bits/color)	16.7M (8bits/color)
	Brightness (CD/m2)	700 (typ.)**	700 (typ.)**
	Viewing Angles (CR >=10)	-89~89 (H); -89~89 (V)	-89~89 (H); -89~89 (V)
	Lamp Life	60,000hrs	60,000hrs
	Synchronization Range_ Horizontal / Vertical (60Hz)	45.76~50.96KHz / 58~62Hz	45.76~50.96KHz / 58~62Hz
	Response Time	6.5ms	6.5ms
	Power Consumption	248 Watt	248 Watt
Recommended Resolution	1920 x 1080 @60Hz	1920 x 1080 @60Hz	
Touchscreen	Type	Project Capacitive Technology (PCT)	Project Capacitive Technology (PCT)
	Optical Resolution	>4 lines/mm (NBS1963A)	>4 lines/mm (NBS1963A)
	Operation Temperature	-35 ~+70	-35 ~+70
	Light transmission	~90%	~90%
	Humidity	RH 9 to 90% up to 40	RH 9 to 90% up to 40
	Driver OS Supported	Win 2000, Win XP, Win Xpe, Win Vista, Win CE, Linux (with remote PCB)	Win 2000, Win XP, Win Xpe, Win Vista, Win CE, Linux (with remote PCB)
Sensor MTBF	Glass with no moving parts or coatngs, no known wear out mechanisms	Glass with no moving parts or coatngs, no known wear out mechanisms	
System Box Specifications			
DSS-4250 Series			
DSS-4270 Series			
Processor & System	CPU	Intel Core™ Duo Mobile processor/Celeron M processor (Default : 2.16G CPU)	Intel Core 2 Duo T9400 2.53 GHz
	Chipset	Intel 945GM / ICH7M	GM45 + ICH9M
	L2 Cache	2M	6M
	BIOS	AWARD 4M bit BIOS	AMI 16 Mbit, SPI
	Front Side Bus	400/533/667 MHz	667/800/1066 MHz
Graphics	Graphics Chipset	Intel® Graphics Media Accelerator 950	Intel GM45 GMCH integrated Graphics Media Accelerator X4500
	Memory Size	Shared system memory up to 224 MB	Shared system memory up to 384 MB
Memory	Technology	DDR2 400/533/667 MHz	DDR3 800/1066 MHz SDRAM
	Max. Capacity	2 GB (Default : 2 GB)	4 GB
	Socket	2 x 200-pin SODIMM	2 x 204-pin SODIMM
I/O ports	OSD	Keys: Auto-tune, Decrease and Increase Functions: Brightness, Contrast, Clock, Phase, Horizontal Position, Vertical Position and Sharpness	Keys: Auto-tune, Decrease and Increase Functions: Brightness, Contrast, Clock, Phase, Horizontal Position, Vertical Position and Sharpness
	Serial	2 (RS-232)	2 (RS-232)
	LAN	1 (RJ-45, 1000Mbps/100Mbps)	2 (RJ-45, 1000Mbps/100Mbps)
	HDD	1 (SATA HDD) (Default : 160 GB)	1 (SATA: Max Data Transfer Rate : 300 MB/s) (Default : 160 GB)
	Audio	AC97 - Line-out, Mic-in, Line-in	AC97 - Line-out, Mic-in, Line-in
	PS/2	1 (for keyboard and mouse with Y cable)	1 (for keyboard and mouse with Y-cable)
	PSW	External Power Switch button	External Power Switch button
	VGA	1 (D-sub 15 pin)	1 (D-sub 15-pin)
Power In Jack	Power In Jack	Power In Jack	

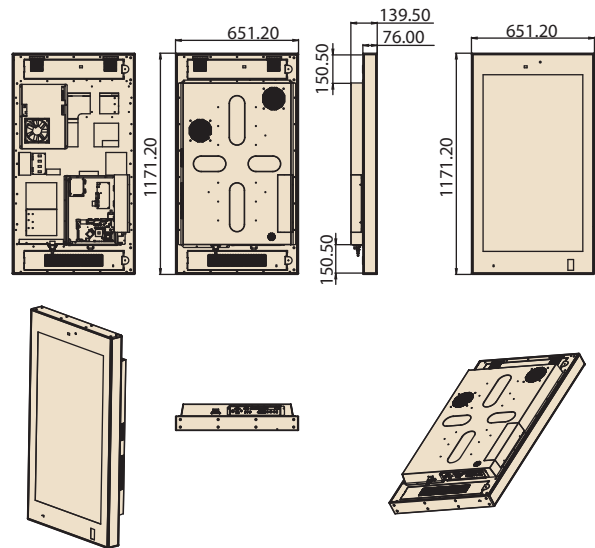
Dimensions

Unit: mm

DSS-4270PFA-W07E



DSS-4250PFA-W07E



Specifications

DSS Station Speaker	Extender Speaker	2 (10 watt)
DSS Station I/O	USB	2
	LAN	1
	Power Button	1
	Power AC In	1
Power	Power Consumption	360 Watt
	Power Source	AC 100-24-V, Universal +10%
Environment	Operating Temperature	0 ~ 45° C
	Storage Temperature	-10 ~ 60° C
	Relative humidity	85%RH
	Shock	10G peak acceleration (11ms duration)
Dimension (L x H x D)	DSS-4250	651.2 x 1171.2 x 139.5 mm
	DSS-4270	734.49 x 2002.5 x 140.67 mm
Weight	DSS-4250	50 KGS
	DSS-4270	85 KGS
Certification	Safety	CE/FCC

Ordering information

P/N	Description
DSS-4250GFA-N07E	42" all in one stand alone system with AR Glass, Intel Core 2 Duo 2.16G CPU, 1G RAM, 160G HDD, XP Pro
DSS-4250PFA-N07E	42" all in one stand alone system with touch, Intel Core 2 Duo 2.16G CPU, 1G RAM, 160G HDD, XP Pro
DSS-4270GFA-N07E	42" kiosk with AR glasss, Intel Core 2 Duo 2.53G CPU, 4G RAM, 160G HDD, XP Pro, 10 watt speaker
DSS-4270PFA-N07E	42" kiosk with touch, Intel Core 2 Duo 2.53G CPU, 4G RAM, 160G HDD, XP Pro, 10 watt speaker

Optional Interactive & Wireless Modules

Optional Modules	P/N	Optional Modules	P/N
Blue Tooth Module	9680004551	HSDAP Module	968EMC0005
RFID Module	9680011496	Proximity Sensor	1600002104
WiFi Module	968EMW0007	Thermal Printer	ODM
Web Camera	9680007111	Vandal Proof AR Glass	Optional