

Zibo Seno Electronic Engineering Co., Ltd.



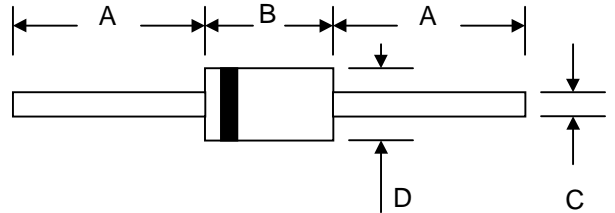
2EZ2.7D5 - 2EZ330D5



2.0W SILICON ZENER DIODE

Features

- Complete Voltage Range 2.7 to 330 Volts
- High peak reverse power dissipation
- High reliability
- Low leakage current
- $\pm 10\%$ tolerance



Mechanical Data

- Case : DO-41 Molded plastic
- Epoxy : UL94V-O rate flame retardant
- Lead : Axial lead solderable per MIL-STD-202, method 208 guaranteed
- Polarity : Color band denotes cathode end
- Mounting position : Any
- **Lead Free: For RoHS / Lead Free Version**

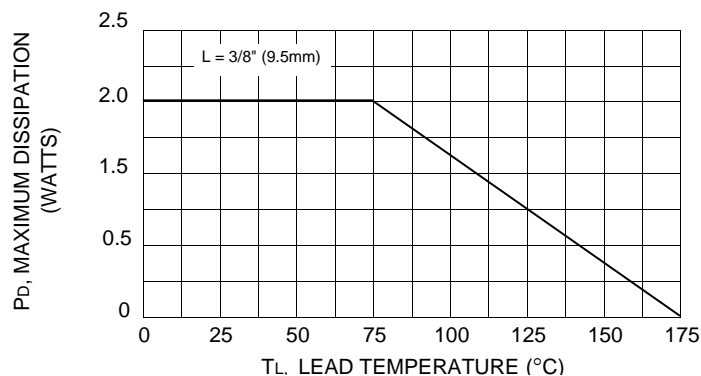
DO-41		
Dim	Min	Max
A	24.5	—
B	4.06	5.21
C	0.60	0.80
D	2.00	3.00
All Dimensions in mm		

Maximum Ratings and Electrical Characteristics @ $T_A = 25^\circ\text{C}$ unless otherwise specified

Characteristic	Symbol	Value	Unit
Power Dissipation (Note 1)	P_d	2.0	W
Forward Voltage @ $I_F = 200\text{mA}$	V_F	1.2	V
Operating and Storage Temperature Range	T_j, T_{STG}	-65 to +175	$^\circ\text{C}$

- Notes:
1. Valid provided that leads are kept at $T_L \leq 75^\circ\text{C}$ with lead length = 9.5mm (3/8") from case; derate above 75°C .
 2. EC Directive 2002/95/EC (RoHS) revision 13.2.2003. Glass and High Temperature Solder Exemptions Applied where applicable, see EU Directive Annex Notes 5 and 7.
 3. Based on dc measurement at thermal equilibrium; lead length = 9.5mm (3/8"); thermal resistance of heat sink = 30°C/W .

Fig. 1 POWER TEMPERATURE DERATING CURVE



Electrical Characteristics @ T_A = 25°C unless otherwise specified

Type No.		Nominal Zener Voltage		Maximum Zener Impedance			Maximum Reverse Leakage Current		Maximum DC Zener Current
		VZ@IZT (V)	IZT (mA)	ZZT@IZT (Ω)	ZZK@IZK (Ω)	IZK (mA)	IR@ VR (μ A)	VR (V)	IZM (mA)
Axial Lead	SMA								
2EZ2.7D5	SZ452H	2.7	80	10	400	1.0	100	1.0	660
2EZ3.0D5	SZ453A	3.0	160	8.0	400	1.0	100	1.0	600
2EZ3.3D5	SZ453D	3.3	145	8.0	400	1.0	80	1.0	545
2EZ3.6D5	SZ453G	3.6	139	5.0	400	1.0	80	1.0	504
2EZ3.9D5	SZ453J	3.9	128	5.0	400	1.0	30	1.0	468
2EZ4.3D5	SZ454D	4.3	116	4.5	400	1.0	20	1.0	434
2EZ4.7D5	SZ454H	4.7	106	4.5	550	1.0	5.0	1.0	386
2EZ5.1D5	SZ455B	5.1	98.0	3.5	600	1.0	5.0	1.0	356
2EZ5.6D5	SZ455G	5.6	89.5	2.5	500	1.0	5.0	2.0	324
2EZ6.2D5	SZ456C	6.2	80.5	1.5	700	1.0	5.0	3.0	292
2EZ6.8D5	SZ456I	6.8	73.5	2.0	700	1.0	50	4.0	266
2EZ7.5D5	SZ457F	7.5	66.5	2.0	700	0.5	50	5.0	242
2EZ8.2D5	SZ458C	8.2	61.0	2.3	700	0.5	50	6.0	220
2EZ9.1D5	SZ459B	9.1	55.0	2.5	700	0.5	50	7.0	200
2EZ10D5	SZ4510	10	50.0	3.5	700	0.25	50	7.6	182
2EZ11D5	SZ4511	11	45.5	4.0	700	0.25	50	8.4	166
2EZ12D5	SZ4512	12	41.5	4.5	700	0.25	50	9.1	152
2EZ13D5	SZ4513	13	38.5	5.0	700	0.25	0.5	9.9	138
2EZ14D5	SZ4514	14	35.7	5.5	700	0.25	0.5	10.6	130
2EZ15D5	SZ4515	15	33.4	7.0	700	0.25	0.5	11.4	122
2EZ16D5	SZ4516	16	31.2	8.0	700	0.25	0.5	12.2	114
2EZ17D5	SZ4517	17	29.4	9.0	750	0.25	0.5	13.0	107
2EZ18D5	SZ4518	18	27.8	10	750	0.25	0.5	13.7	100
2EZ19D5	SZ4519	19	26.3	11	750	0.25	0.5	14.4	95
2EZ20D5	SZ4520	20	25.0	11	750	0.25	0.5	15.2	90
2EZ22D5	SZ4522	22	22.8	12	750	0.25	0.5	16.7	82
2EZ24D5	SZ4524	24	20.8	13	750	0.25	0.5	18.2	76
2EZ27D5	SZ4527	27	18.5	18	750	0.25	0.5	20.6	68
2EZ30D5	SZ4530	30	16.6	20	1000	0.25	0.5	22.5	60
2EZ33D5	SZ4533	33	15.1	23	1000	0.25	0.5	25.1	55
2EZ36D5	SZ4536	36	13.9	25	1000	0.25	0.5	27.4	50
2EZ39D5	SZ4539	39	12.8	30	1000	0.25	0.5	29.7	47
2EZ43D5	SZ4543	43	11.6	35	1500	0.25	0.5	32.7	43
2EZ47D5	SZ4547	47	10.6	40	1500	0.25	0.5	35.8	39
2EZ51D5	SZ4551	51	9.8	48	1500	0.25	0.5	38.8	36
2EZ56D5	SZ4556	56	9.0	55	2000	0.25	0.5	42.6	32
2EZ62D5	SZ4562	62	8.1	60	2000	0.25	0.5	47.1	29
2EZ68D5	SZ4568	68	7.4	75	2000	0.25	0.5	51.7	27
2EZ75D5	SZ4575	75	6.7	90	2000	0.25	0.5	56.0	24
2EZ82D5	SZ4582	82	6.1	100	3000	0.25	0.5	62.2	22
2EZ91D5	SZ4591	91	5.5	125	3000	0.25	0.5	69.2	20
2EZ100D5	SZ45B0	100	5.0	175	3000	0.25	0.5	76.0	18
2EZ110D5	SZ45B1	110	4.5	250	4000	0.25	0.5	83.6	17
2EZ120D5	SZ45B2	120	4.2	325	4500	0.25	0.5	91.2	15
2EZ130D5	SZ45B3	130	3.8	400	5000	0.25	0.5	98.8	14
2EZ140D5	SZ45B4	140	3.6	500	5500	0.25	0.5	106.4	13
2EZ150D5	SZ45B5	150	3.3	575	6000	0.25	0.5	114.0	12
2EZ160D5	SZ45B6	160	3.1	650	6500	0.25	0.5	121.6	11
2EZ170D5	SZ45B7	170	2.9	675	7000	0.25	0.5	130.4	11
2EZ180D5	SZ45B8	180	2.8	725	7000	0.25	0.5	136.8	10
2EZ190D5	SZ45B9	190	2.6	825	8000	0.25	0.5	144.8	10
2EZ200D5	SZ45D0	200	2.5	900	8000	0.25	0.5	152.0	9.0
2EZ220D5	SZ45D2	220	2.0	2000	8500	0.25	0.5	167	8.0
2EZ270D5	SZ45D7	270	1.6	2200	8500	0.25	0.5	205	6.7
2EZ300D5	SZ45E0	300	1.5	2200	9000	0.25	0.5	228	5.9
2EZ330D5	SZ45E3	330	1.4	2300	9000	0.25	0.5	250	5.4