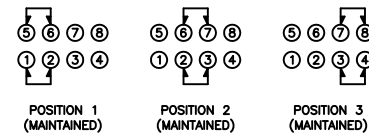


SCHEMATIC



SPECIFICATIONS

FUNCTION:
2P3T ON-ON
Non-Shorting

RATINGS:
ANSI/UL 1054 and CAN/CSA C22.2 No. 55 (E194579):
11A 125VAC [cURus]
5.5A 250VAC [cURus]

OPERATING FORCE:
400gf ±200gf

CONTACT RESISTANCE:
Initial: 30mΩ Max. at 50VDC

INSULATION RESISTANCE:
500MΩ Min. at 500VDC

DIELECTRIC STRENGTH:
1,000VAC For 1 Minute

MECHANICAL LIFE:
100,000 Cycles

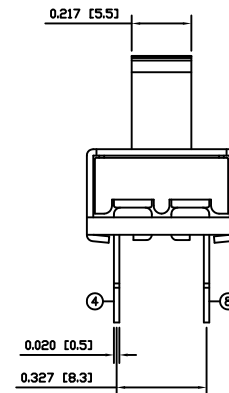
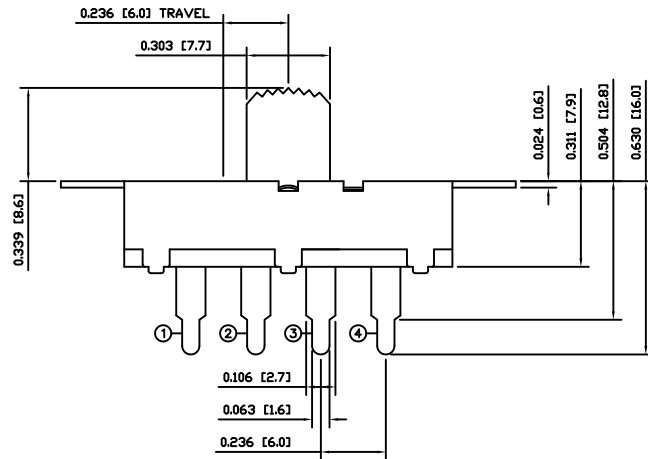
ELECTRICAL LIFE:
6,000 Cycles [cURus]

TEMPERATURE:
-30°C to 55°C [cURus]

APPROVALS:



POSITION 1 POSITION 2 POSITION 3



COLORS

BODY:
Metallic

ACTUATOR:
Black

MATERIALS

UPPER BODY:
Nickel Plated Steel

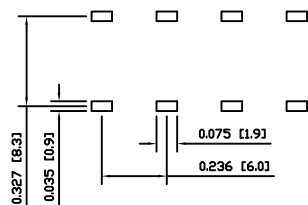
BASE:
Penolic Board, UL94 V-0

ACTUATOR:
Polyphenylene Oxide

CONTACTS:
Silver Alloy

TERMINALS:
Silver Plated Copper

SUGGESTED PCB LAYOUT



THE INFORMATION CONTAINED IN THIS DOCUMENT IS PROPRIETARY TO E-SWITCH AND IS NOT TO BE COPIED OR TRANSFERRED

B	CORRECTED BODY ATTACHMENT TABS	19066	10/05/14	CAB
A	INITIAL RELEASE	19025	10/05/06	CAB
REV.	DESCRIPTION	PCR	DATE	DRAWN BY

DIMENSIONS	
INCHES [MILLIMETERS]	
GENERAL TOLERANCES	
±0.008 [±0.2] / ±1'	
SCALE	PROJECTION
DRAWING NOT TO SCALE	1st Angle

LSU11-230101A8.6		
ITEM NUMBER	DATE	REVISION
03-LSU11230101A86	MAY 14, 2010	B