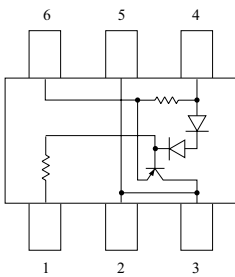


LED Drive Application.

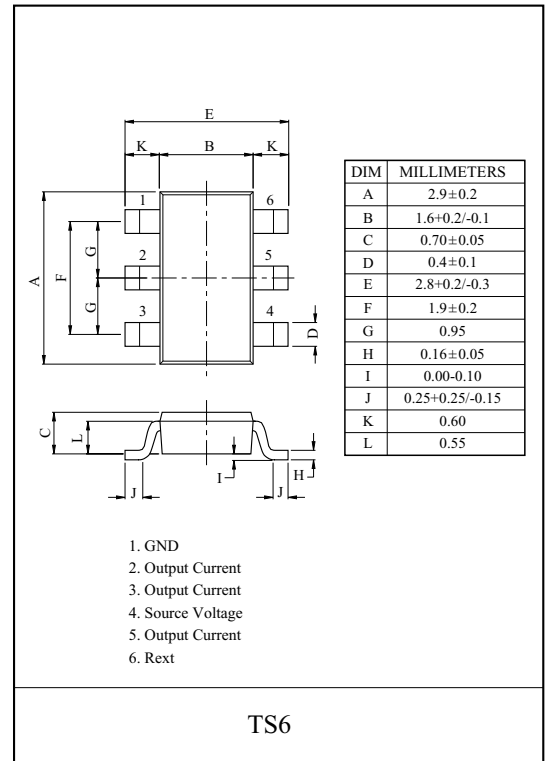
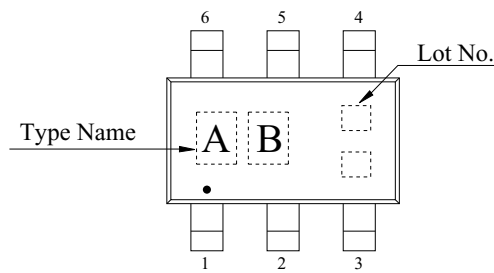
FEATURES

- Supplies stable bias current even at low battery voltage.
- Ideal for stabilizing bias current of LEDs.
- Negative temperature coefficient protects LEDs against thermal overload.

EQUIVALENT CIRCUIT



MARKING



MAXIMUM RATING (Ta=25°C)

CHARACTERISTIC	SYMBOL	RATING	UNIT
Source Voltage	V_S	40	V
Output Current	I_O	65	mA
Output Voltage	V_O	38	V
Reverse Voltage Between All Terminals	V_R	0.5	V
Power Dissipation	P_D^*	900	mW
Junction Temperature	T_j	150	°C
Storage Temperature Range	T_{stg}	-55 ~ 150	°C

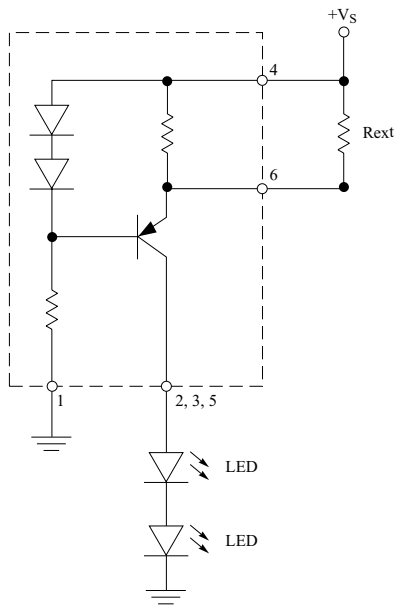
*Package mounted on a ceramic board (600mm² × 0.8mm)

KCR405T

ELECTRICAL CHARACTERISTICS (Ta=25°C)

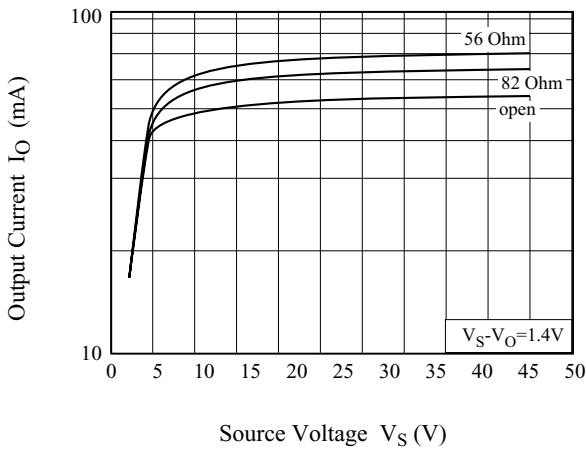
CHARACTERISTIC	SYMBOL	TEST CONDITION	MIN.	TYP.	MAX.	UNIT
Collector-Emitter Breakdown Voltage	BV_{CEO}	$I_C=1mA, I_B=0$	40	-	-	V
Supply Current	I_S	$V_S=10V$	340	420	500	μA
DC Current Gain	h_{FE}	$I_C=50mA, V_{CE}=1V$	100	200	400	-
Internal Resistor	R_{int}	$I_{Rint}=50mA$	11	15	19	Ω
Output Current	I_O	$V_S=10V$	45	50	55	mA
Voltage Drop (V_S-V_E)	V_{Drop}	$I_O=50mA$	0.7	0.75	0.8	V
Lowest Sufficient Battery Voltage Overhead	V_{Smin}	$I_O>18mA$	-	1.4	-	V
Output Current Change Versus Ta	$\Delta I_O/I_O$	$V_S=10V$	-	-0.15	-	%/K
Output Current Change Versus V_S	$\Delta I_O/I_O$	$V_S=10V$	-	1	-	%/V

APPLICATION CIRCUIT

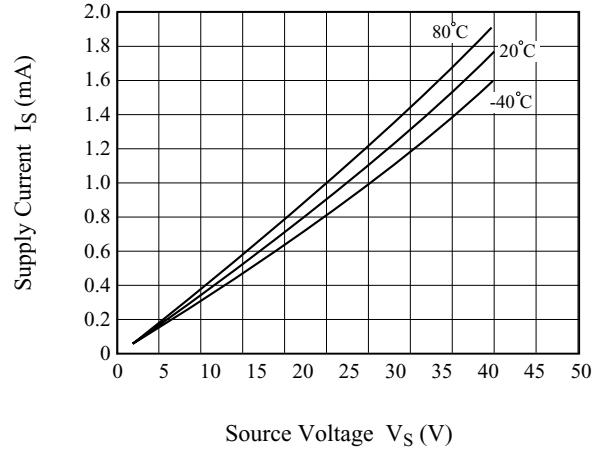


KCR405T

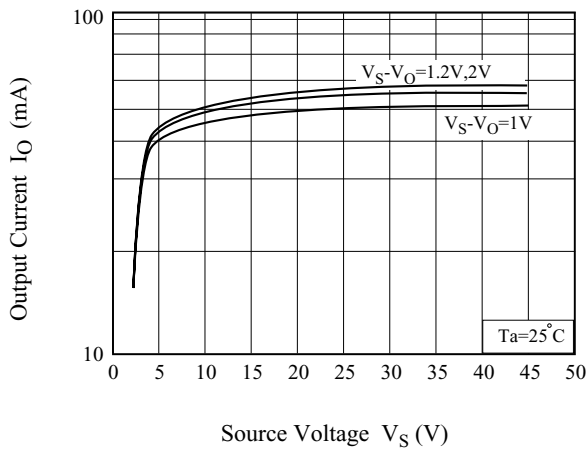
$I_O - V_S$



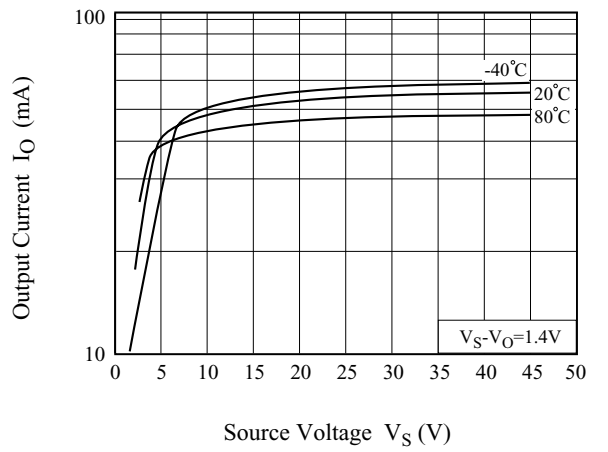
$I_S - V_S$



$I_O - V_S$



$I_O - V_S$



$I_O - R_{ext}$

