



FEATURES:

- AC Input 108~305 Vac Nominal
- 1-10V Dimming
- AC Inrush current: 10 A @ 230 Vac Cold start
- Power Factor: > 0.95 @ 120 Vac / > 0.9 @ 277 Vac
- Protection: SCP / OVP / OCP
- High Operating Ambient Temp.: -30 °C ~ +60 °C
- Surge Protection: L-N 2 kV
- Safety: Meets UL
- EMI: Meets FCC / Meets CE
- Comply with Indoor/Outdoor Waterproof (IP 67)
- Warranty: 5 years (refer to LinkCom warranty policy)
- RoHS Compliant

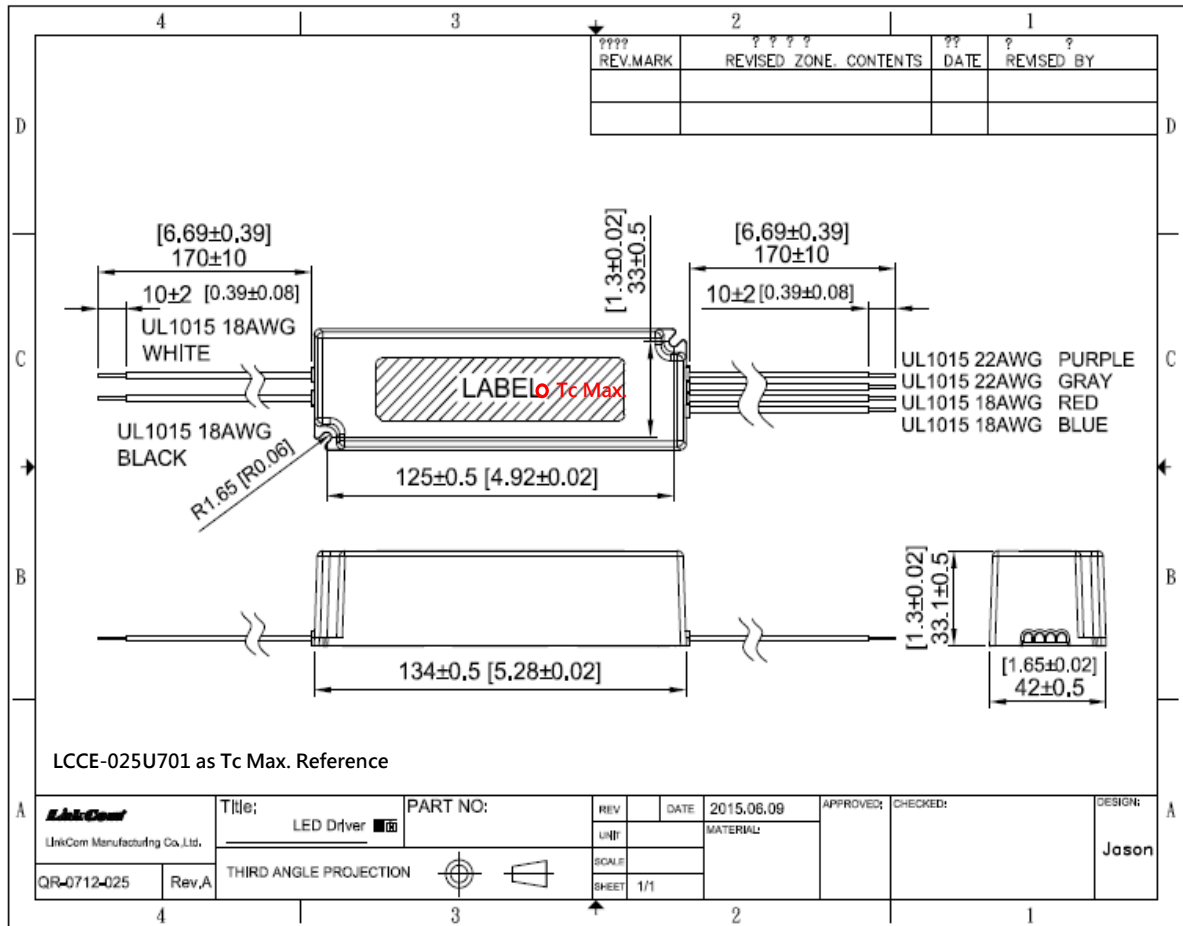
PRODUCT SPECIFICATION						
MODEL	DC OUTPUT POWER(W)	DC OUTPUT VOLTAGE(V)	OUTPUT CURRENT(A)	OUTPUT CURRENT TOLERANCE	EFFICIENCY	O/P NOISE(P-P, V)
DBFE-025U701-00	26.6	30-38	0.7	±5%	84%	3
DBFE-020U701-00	19.6	20-28	0.7	±5%	84%	3

ELECTRICAL SPECIFICATION	
INPUT VOLTAGE RANGE	108-305 Vac, 152-431 Vdc, Normal: 120-277 Vac
INPUT FREQUENCY	Range: 47-63 Hz, Normal: 50-60 Hz
ACTIVE POWER FACTOR	> 0.95 @ 120 Vac / > 0.9 @ 277 Vac
THD	< 20% @ 277 Vac at Full Load
TURN ON DELAY TIME	1s at Full Load 120 Vac / 277 Vac
AC CURRENT	0.35 A / 120 Vac 0.15 A / 277 Vac
INRUSH CURRENT (max)	Cold Start 10 A @ 230 Vac
LEAKAGE CURRENT	< 0.7 mA / 240 Vac
SHORT CIRCUIT PROTECTION	SCP will restart automatically after the fault condition is removed
OVER VOLTAGE PROTECTION	Shut down and latch off o/p voltage, re-power on to recover
OVER CURRENT PROTECTION	Constant Current
OPERATING TEMP.	-30°C ~ +60°C
STORAGE TEMP.	-40°C ~ +80°C
RELATIVE HUMIDITY	10% to +90%, non-cond.
SAFETY	Meets UL 60950-1
EMI	Meets FCC Part 15 / Meets EN 55015
WITHSTAND VOLTAGE	I/P-O/P: 3 kVac
ISOLATION RESISTANCE	I/P-O/P :10M Ω / 500 Vdc / 25°C / 70% RH
DIMENSION (L*W*H)	134 * 42 * 33.1 mm 【5.28 * 1.65 * 1.3 inch】
(1) All parameters specified at 230 Vac input unless otherwise noted. (2) All specifications Typical at 25°C, unless otherwise noted, at normal line and load. (3) Ripple and Noise measured directly at pins/terminals at nom. load, 0.1uF bypass and 47uF electrolytic, pk-pk at 20MHz bandwidth. (4) Specified for free-air convection cooling. (5) Minimum load is NOT required for proper operation . (6) 100% Production Tested.	

* REFERENCE: www.linkcom.com.tw

* Please contact sales@linkcom.com.tw, sales@linkcomusa.com for more information

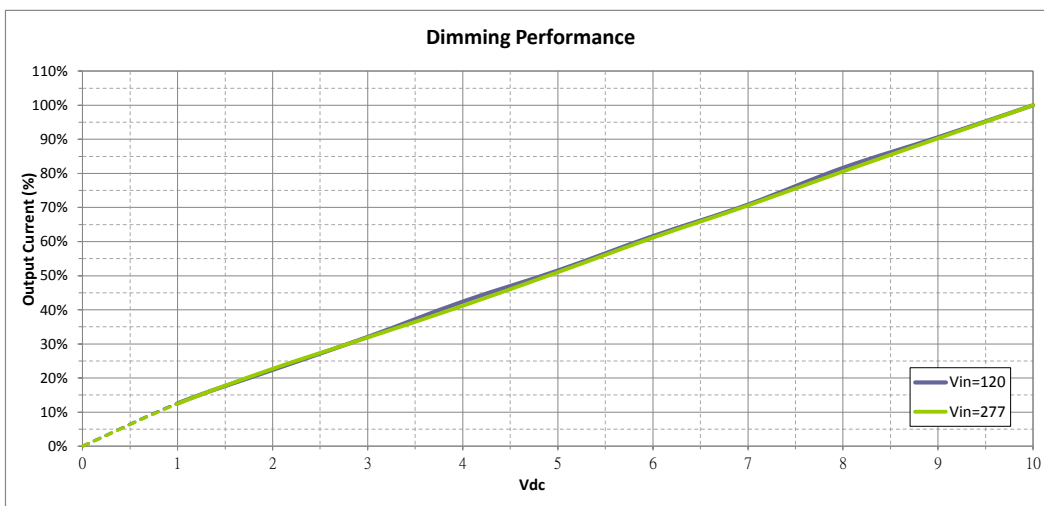
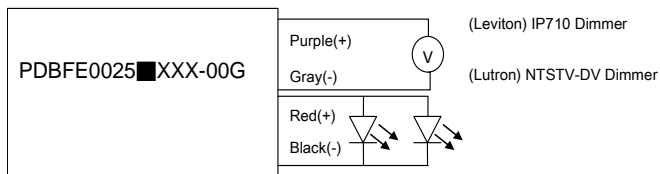
DIMENSIONS



* REFERENCE: www.linkcom.com.tw

DIMMING OPERATION

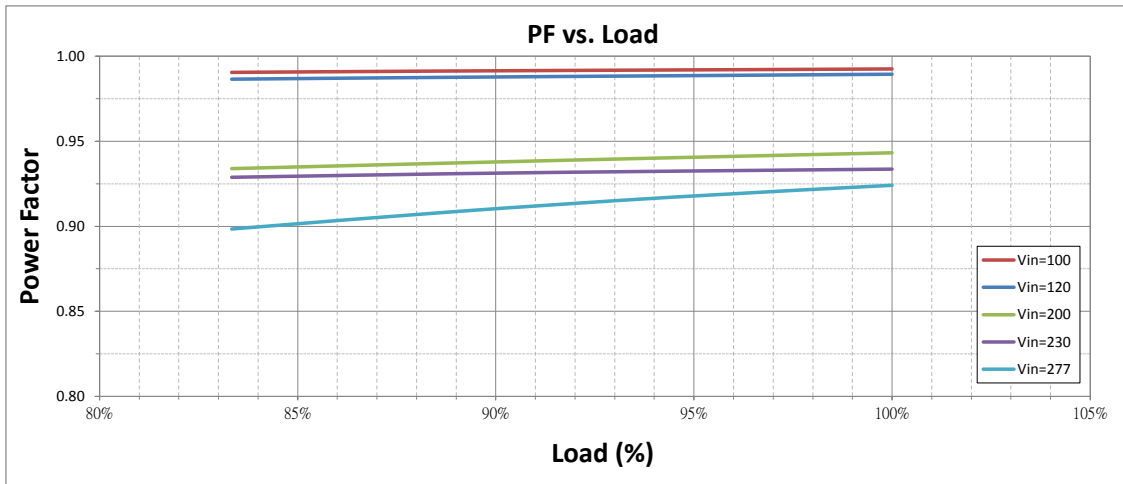
Parameters	Minimum	Typical	Maximum
Absolute maximum voltage on the 0-10(+) Purple Wire	1V		10V
Source current on the 0-10V(+) Purple Wire	0mA		100mA



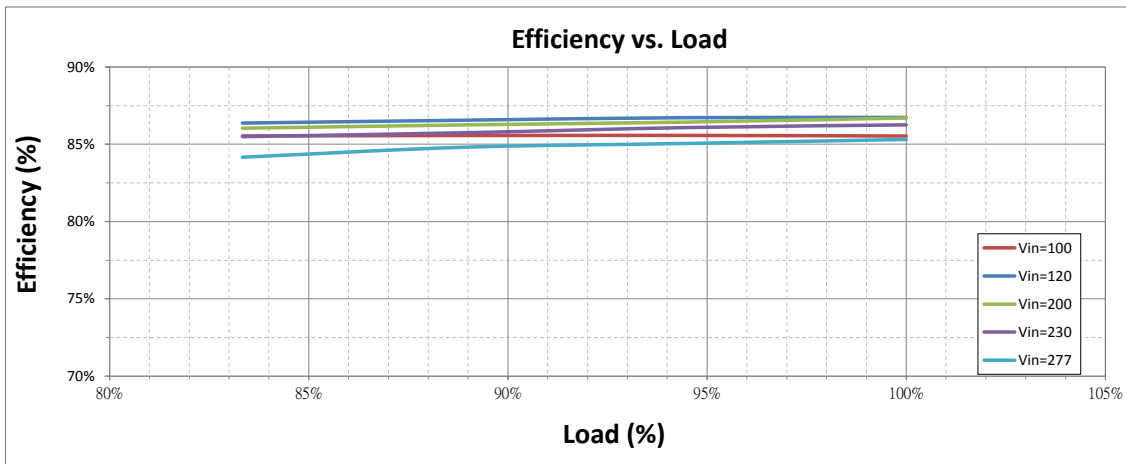
Notes:

1. Purple and Gray wires on the output side are used for 0-10V dimming.
2. When connected to different Dimmers, 0-10V dimmable version will have a $\pm 10\%$ output current tolerance.
3. Recommended dimmers are Leviton IP710, Lutron NTSTV-DV or equivalent.
4. When dimming wires +Purple/-Gray are left open, the output current will be at 100%.
5. If 0-10V Dimmer is below 1V, the LED Driver output will be shut down and enter to Hiccup mode.

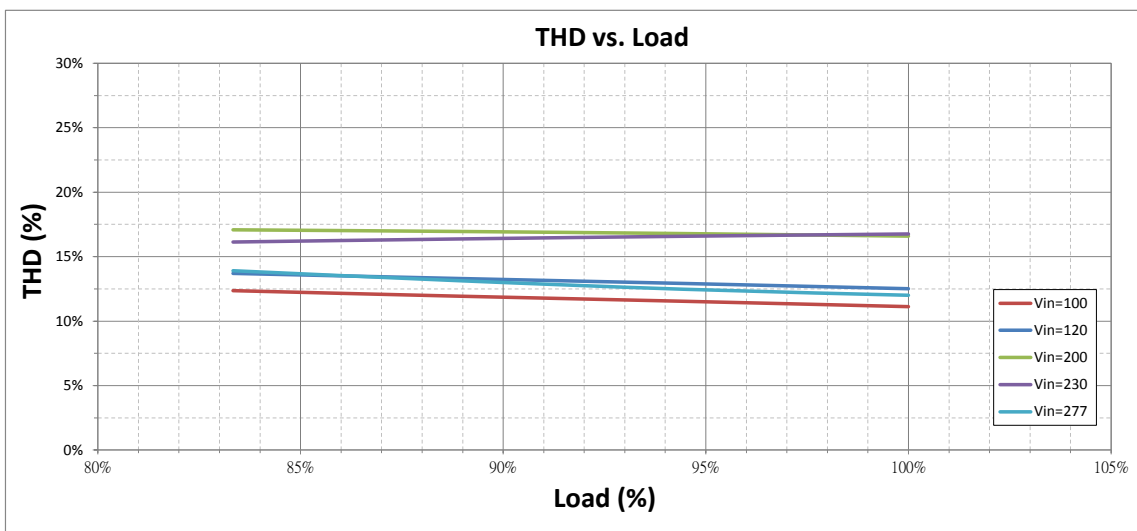
Power Factor vs. Load (DBFE-025U701-00)



Efficiency vs. Load (DBFE-025U701-00)



T.H.D vs. Load (DBFE-025U701-00)



Output Current VS Load (DBFE-025U701-00)

