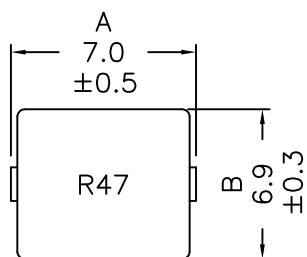
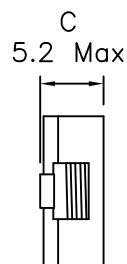


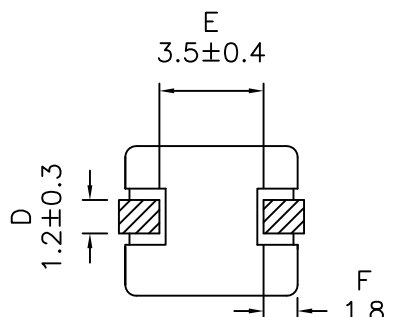
## 1. Mechanical Dimensions:



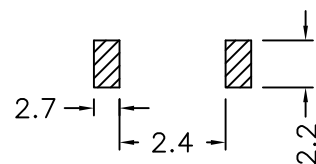
Top view



Side view

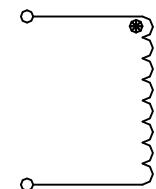


Bottom view



Typical Pad Layout

## 2. Schematic:



## 3. Electrical Specifications:

OCL:  $0.47\mu\text{H} \pm 20\%$  @100KHz 0.25V

Q: 12 Min @100KHz 0.25V

DCR: 4.2 mOhms Max

I<sub>rms</sub>: 17.5A (Based on 40°C Temp Rise)

I<sub>sat</sub>: 26.0Adc (Based on 20% Typ drop in OCL)

### Notes:

- Solderability: Leads shall meet MIL-STD-202G, Method 208H for solderability.
- Flammability: UL94V-0
- ASTM oxygen index: > 28%
- Insulation System: Class F 155°C. UL file E151556
- Operating Temperature Range: All listed parameters are to be within tolerance from -40°C to +85°C
- Storage Temperature Range: -55°C to +125°C
- Aqueous wash compatible
- SMD Lead Coplanarity:  $\pm 0.004''$  (0.102mm)
- Electrical and mechanical specifications 100% tested
- RoHS Compliant Component

DOC. REV: A/3

<b>XFMRs Inc</b> <a href="http://www.XFMRS.com">www.XFMRS.com</a>	Title: MAGNETICALLY SHIELDED HIGH CURRENT INDUCTOR		
	UNLESS OTHERWISE SPECIFIED TOLERANCES: .xx ±0.25 Dimensions in MM	P/N: XFHCL6MD-R47M	REV. A
	DWN.	Yuan	Jan-05-15
	CHK.	YK Liao	Jan-05-15
SHEET 1 OF 1	APP.	DDC	Jan-05-15