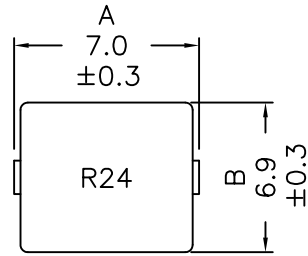
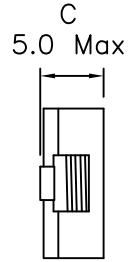


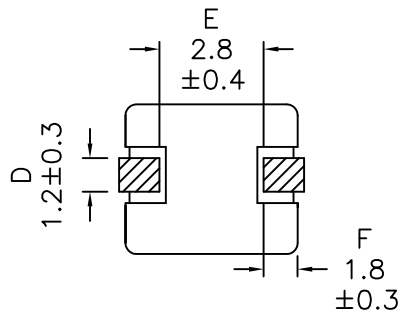
1. Mechanical Dimensions:



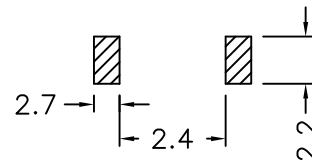
Top view



Side view

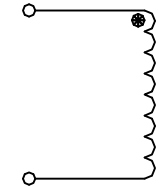


Bottom view



Typical Pad Layout

2. Schematic:



3. Electrical Specifications: @25°C

OCL: 0.24uH±20% @100KHz, 100mV

IDC: 0.19uH Typ @100KHz, 100mV @20.0A

Q: tbd Min @100KHz, 100mV

DCR: 1.0 mOhms ±10%

I_{rms}: 20.0A Max (Based on 50°C Temp Rise)

I_{sat}: 28.0Adc Typ (Based on 30% Max drop in OCL)

SRF: 320MHz Typ

Notes:

1. Solderability: Leads shall meet MIL-STD-202G, Method 208H for solderability.
2. Flammability: UL94V-0
3. ASTM oxygen index: > 28%
4. Insulation System: Class F 155°C. UL file E151556
5. Operating Temperature Range: All listed parameters are to be within tolerance from -40°C to +150°C
Ambient temperature: -40°C to +100°C
6. Storage Temperature Range: -20°C to +40°C
7. Aqueous wash compatible
8. SMD Lead Coplanarity: ±0.004"(0.102mm)
9. Electrical and mechanical specifications 100% tested
10. RoHS Compliant Component
11. Recommended IR Reflow peak temp of 235°C Max.

PRELIMINARY

DOC. REV: A/-

XFMRs Inc www.XFMRS.com	Title: HIGH CURRENT INDUCTOR		
	UNLESS OTHERWISE SPECIFIED TOLERANCES: .xx ±0.25 Dimensions in MM	P/N: XFHCL6MD-R24M	REV. A
SHEET 1 OF 1	DWN.	Yuan	Mar-26-14
	CHK.	YK Liao	Mar-26-14
	APP.	DDC	Mar-26-14

PROPRIETARY

Document is the property of XFMRs Group & is not allowed to be duplicated without authorization.