

# C&K LF Series Precision Snap-acting Reset Switches



## Features/Benefits

- Low operating force
- Long life
- Compact design
- High electrical ratings

## Typical Applications

- Pumps
- Furnace controls



## Specifications

### CONTACT RATING:

- 5 Amps @ 250 V AC (UL/CSA)
- 2 Amps @ 480 V AC (UL/CSA)
- 1/2 HP @ 480 V (UL/CSA)
- 5 (1) Amps @ 250 V AC ~ 10E3 T90 VDE

ELECTRICAL LIFE: 100,000 cycles at 5 Amps @ 250

INSULATION RESISTANCE: 1,000 Meg Ohms Min.

DIELECTRIC STRENGTH: 1,000 V RMS min. @ sea

OPERATING TEMPERATURE: -40 C to 95 C

OPERATING FORCE: 15 grams / .53 oz

MOUNTING: 2-56 screws, torque 2.3 in/ lbs max

## Materials

SWITCH HOUSING: 6/6 nylon

ACTUATOR BUTTON: Thermoset

SPRING: Beryllium copper

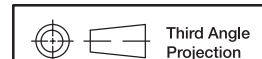
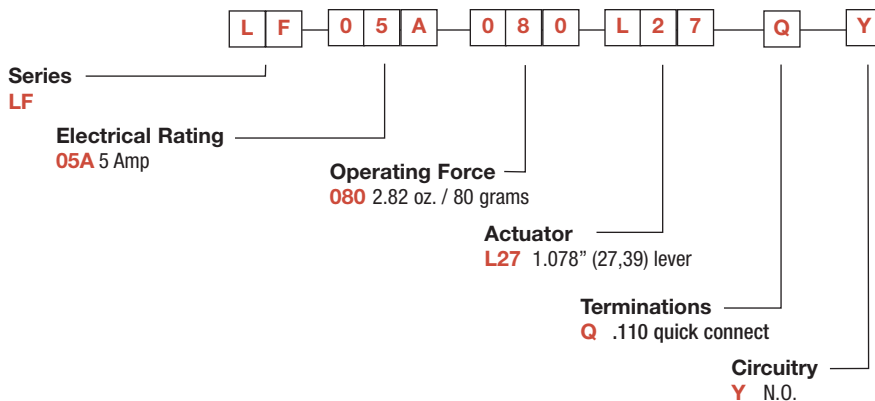
MOVABLE CONTACT: Fine silver

STATIONARY CONTACT: Fine silver on copper alloy

**NOTE:** For the latest information regarding RoHS compliance, please go to: [www.ittcannon.com/rohs](http://www.ittcannon.com/rohs).

## Build-A-Switch

To order, simply select desired option from each category and place in the appropriate box. Available options are shown and described on pages K-53 and K-54. For additional options not shown in catalog, consult Customer Service Center.

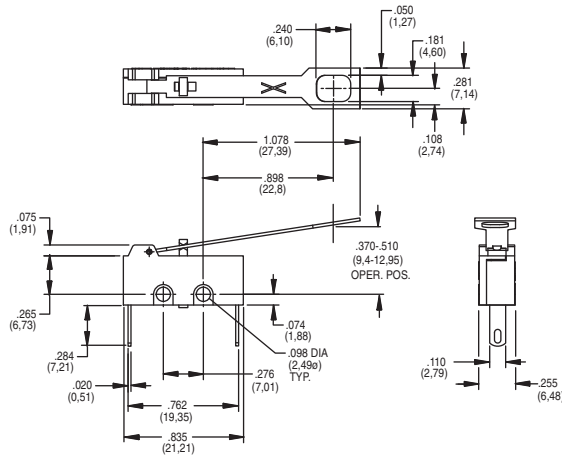


Third Angle  
Projection

Dimensions are shown: Inch (mm)  
Specifications and dimensions subject to change

# C&K LF Series Precision Snap-acting Reset Switches

**LF** PRECISION SNAP-ACTING RESET SWITCH



## ELECTRICAL RATING

Option Code	RoHS Compliant *	RoHS Compatible *	Electrical Rating		
			Moveable Contact	Stationary Contact	Electrical Rating
<b>05A</b>	Yes	Yes	Fine Silver	Fine Silver on copper alloy	5 Amps @ 250VAC (UL/CSA) 2 Amps @ 480VAC (UL/CSA) 1/2 @ 480VAC (UL/CSA) 5 (1) @ 250VAC-10E3 T90 (VDE)

\* Note: See Technical Data in section N of this catalog for RoHS compliant and compatible definition and specifications.

All models with all options.

Consult Customer Service center for availability and delivery of nonstandard ratings.

\*Electrical rating 03A is not available with Operating Force rating of 080.

## OPERATING FORCE

OPTION CODE	BASIC SWITCH OPERATING FORCE (OZ./GRAMS)
<b>080</b>	2.82/80

\*Electrical rating 03A is not available with Operating Force rating of 080.

## ACTUATOR

Switch Characteristic			
Option Code	Maximum Operate Force oz/grams	Minimum Open Position	Maximum Closed Position
<b>L27</b>	0.53 15	0.51 (9,4)	0.37 (12.95)



Dimensions are shown: IN (mm)  
Specifications and dimensions subject to change



**K**

Snap-acting