

Model 7010
PLANAR BULKHEAD with DC Block

10 MHz to 26.5 GHz

SMK Connectors to Planar Interface



Features

- /// Usable to 40 GHz.
- /// Eliminates the requirement for a separate dc Block to protect instrument front ends.
- /// Offers the user multiple connector options and quick replacement of damaged connectors.
- /// Provides all the features and versatility of the PLANAR CROWN® Connector System.

Specifications

NOMINAL IMPEDANCE: 50 Ω

FREQUENCY RANGE: 10 MHz to 26.5 GHz

MAXIMUM SWR:

Frequency (GHz)	SWR
10 MHz - 18	1.20
18 - 26.5	1.25

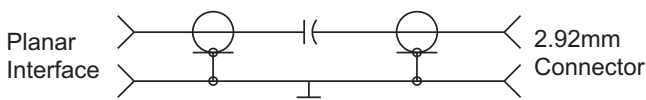
INSERTION LOSS & REPEATABILITY (dB):

Frequency (GHz)	Loss
10 MHz - 18	0.6
18 - 26.5	0.9

Note: SWR and Insertion Loss specifications are based on a mated pair of Models 7010-X and 7005A-XX PLANAR CROWN® connector types.

DC BLOCK CAPACITOR RATING: 1,700 pf minimum;
+ 50 Vdc working voltage

SCHEMATIC DIAGRAM:



TEMPERATURE RANGE: 0°C to +60°C (operating)

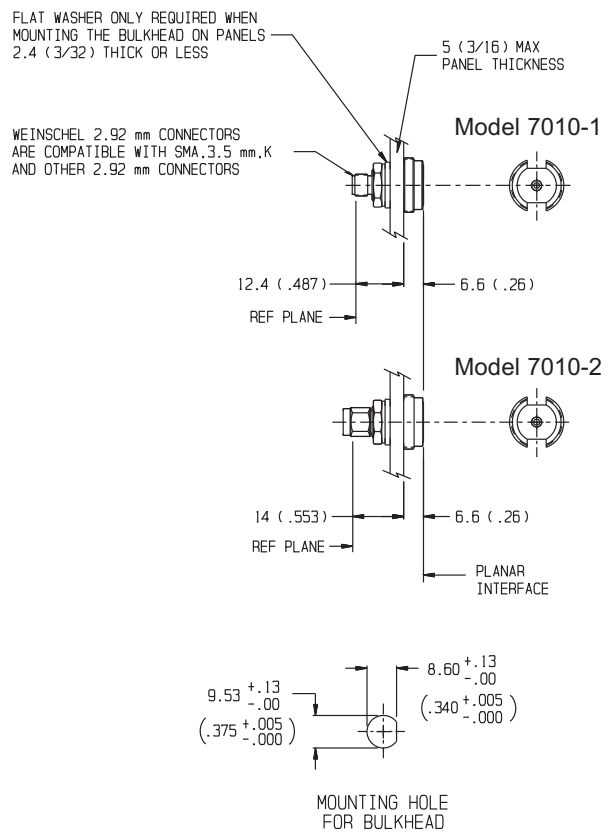
-40°C to +70°C (non-operating)

CONNECTORS: Primary connector is SMK (2.92 mm) female or male connector, with a PLANAR INTERFACE on opposite end. Contact Pin Recession of SMK (2.92mm) is 0 to 0.076 mm (0 to 0.003 in) for reference plane. Add -1 for female SMK connector or -2 for SMK male connector

CONSTRUCTION: Passivated Stainless steel body and connectors; gold plated beryllium copper contacts

WEIGHT: Net: 20 g (0.7 oz)

PHYSICAL DIMENSIONS:



NOTE: All dimensions are given in mm (inches) and are maximum, unless otherwise specified.