



Solid State Devices, Inc.

14701 Firestone Blvd * La Mirada, CA 90638

Phone: (562) 404-4474 * Fax: (562) 404-1773

ssdi@ssdi-power.com * www.ssdi-power.com

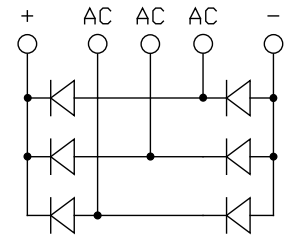
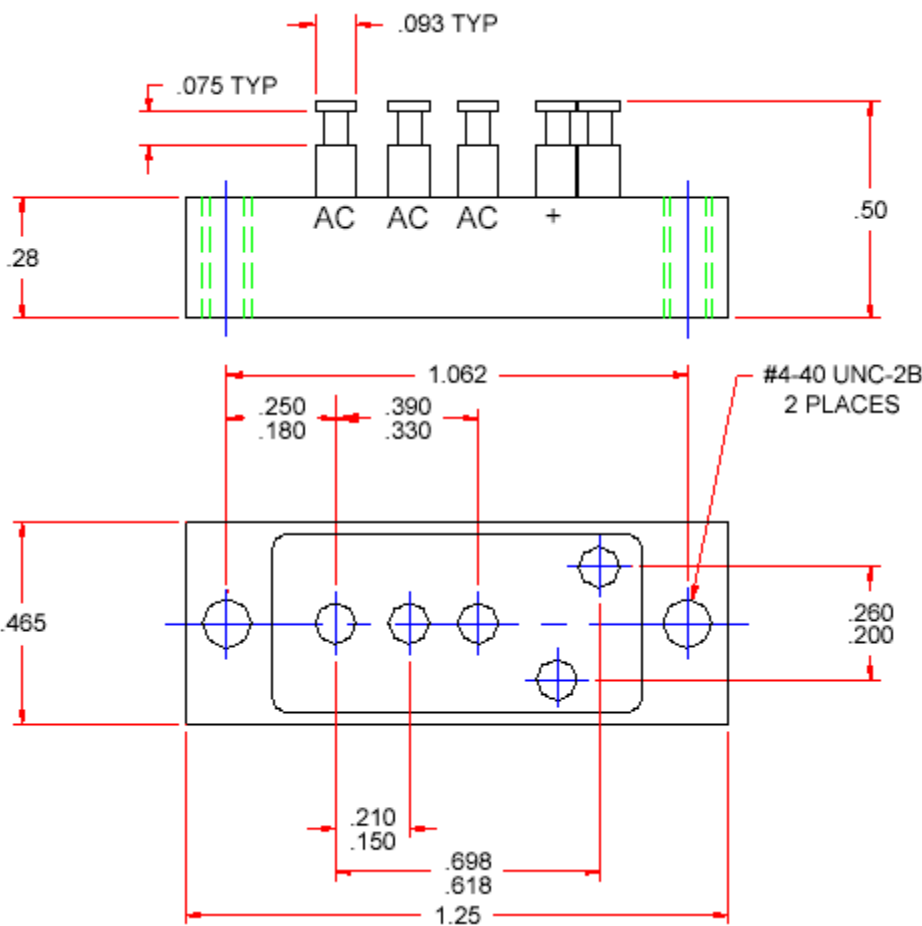
SDA403A

Thru

SDA403G

Electrical Characteristics (per leg) ^{3/}	Symbol	Max	Units
Instantaneous Forward Voltage Drop (300 – 500 μ sec pulse)	$I_F = 3A, T_A = 25^\circ C$ V_{F1}	1.2	V_{DC}
Reverse Leakage Current (Rated V_R , 300 μ sec pulse Minimum)	$T_A = 25^\circ C$ $T_A = 100^\circ C$ I_{R1} I_{R2}	3 100	μA
Reverse Recovery Time ($I_F = 500$ mA, $I_R = 1$ Amp, $I_{RR} = 250$ mA)	$T_A = 25^\circ C$ t_{RR}	5	μ sec

SDA403 CASE OUTLINE:



Tolerances: (Unless Otherwise Specified)
 .xx \pm .03"
 .xxx \pm .010"

NOTE: All specifications are subject to change without notification. SCD's for these devices should be reviewed by SSDI prior to release.

DATA SHEET #: RA0005C

DOC