

ATLANTIC VERSION TERMINATOR INTERFACE ADAPTER	PART NUMBER	REVISION	DESCRIPTION	FEED TYPE	CONVERT TO	PART NUMBERS REQUIRED					
	2150041-2	A	FINE CRIMP HEIGHT ADJUST	PNEUMATIC	-	-	-	-	-	-	-
	2150041-5	A	FINE CRIMP HEIGHT ADJUST	SERVO LATCH PLATE <sup>4</sup>	SERVO LATCH PLATE	2119951-1	1901697-1	8-2150041-5	-	-	2168400-7 (QUANTITY 2)
	2150041-6	A	NON-CRIMP HEIGHT ADJUST	SERVO LATCH PLATE <sup>11</sup>	-	-	-	-	-	-	-
	2150041-7	A	FINE CRIMP HEIGHT ADJUST	NONE	-	-	-	-	-	-	-
	7-2150041-7	A	CRIMP TOOLING KIT	-	-	-	-	-	-	-	-

APPLICATOR DATA		
CRIMP	SIZE	TYPE
WIRE	2.79 mm [.110]	F
INSUL	4.57 mm [.180]	F
APPL INSTRUCTIONS 408-10390		

TERMINAL DATA: TE TERMINAL		TE CRIMP SPECIFICATION	
TERMINAL NAME: 250 SERIES TAB WITH LATCH			
WIRE STRIP LENGTH		INSULATION DIAMETER RANGE	
4.80-5.60 mm [.189-.220 IN]		∅2.10-3.40 mm [.083-.134 IN]	
TERMINAL APPLICATION SPECIFICATION	114-5052	-	-
TERMINALS APPLIED <sup>10</sup>			
TE TERMINAL	TE TERMINAL	TE TERMINAL	TE TERMINAL
170030-1	170030-2	170030-3	170030-4
170030-5	170030-9	170340-1	170340-3
1-170340-3			

WIRE SIZE	CRIMP HEIGHT mm [INCH]	CRIMP HEIGHT REFERENCE SETTING
14 AWG OR 2.00mm2	1.68+/-0.05 [.066+/-0.002]	6.8
1.50mm2	1.63+/-0.05 [.064+/-0.002]	7.0
16 AWG OR 1.25mm2	1.55+/-0.05 [.061+/-0.002]	8.1
18 AWG OR 0.85mm2	1.42+/-0.05 [.056+/-0.002]	9.4

- RECOMMENDED SPARE PARTS
- GREASE BEARING SURFACES LIGHTLY
- 3. LUBRICATE DAILY PER THE APPLICATOR INSTRUCTION SHEET SUPPLIED WITH THE APPLICATOR.
- APPLICATOR SPECIFIC DATA TO BE ENTERED INTO BLANK MEMORY CHIP AT ASSEMBLY. SEE BELOW FOR PART NUMBER:  
 PNEUMATIC FEED WITH "SMART APPLICATOR" CONVERSION: 8-2150041-4  
 SERVO FEED WITH "FINE CRIMP HEIGHT ADJUST": 8-2150041-5  
 SERVO FEED WITH "NON-CRIMP HEIGHT ADJUST": 8-2150041-6
- 5. ADJUSTMENT OF THE STRIPPER MAY BE REQUIRED WHEN MOVING THE APPLICATOR BETWEEN BENCH AND LEADMAKER APPLICATIONS.
- APPLY PART NUMBER 1-23419-5 LOCTITE TO THREADS OF ITEMS 50, 62 & 242. FOR -6 ONLY APPLY PART NUMBER 1-23419-5 LOCTITE TO THREADS OF ITEMS 37, 50 & 242.
- GREASE THREADS, GROOVE AND O-RING ON ITEMS 35 & 252.
- MAGNET, ITEM 166 MUST BE ORIENTED CORRECTLY IN ORDER TO PROPERLY ACTUATE THE COUNTER.
- CRIMP HEIGHT REFERENCE SETTING WAS THE SETTING USED WHEN THE APPLICATOR WAS QUALIFIED AT THE FACTORY. ADJUSTMENT MAY BE NECESSARY WHEN RUNNING APPLICATOR IN THE FIELD.
- TERMINAL PITCH NOT COMPATIBLE WITH MECHANICAL FEED.
- WHEN ASSEMBLING -6 NON-CRIMP HEIGHT ADJUST APPLICATOR USE SHIM PACK 2119951-2 TO ALIGN APPLICATOR'S MAXIMUM WIRE CRIMP HEIGHT AT NORMAL TERMINATOR SHUT HEIGHT

**\*WARNING**  
ON INSTALLATION, SET WIRE DISC, ITEM 40 TO LARGEST WIRE SIZE SETTING. USE OF SETTINGS BELOW MINIMUM REQUIRED CRIMP HEIGHT SETTING WILL CAUSE DAMAGE TO CRIMP TOOLING.

-	1	1	1	1	455888-3	SPACER, CRIMPER	261
-	-	1	-	-	2119957-2	APPLICATOR SHIM PACK	260
-	1	-	1	1	8-21084-0	O-RING, .676 ID, .070 DIA. MAT.	252
-	-	-	-	1	2119640-1	PUSH ROD, AIR FEED	250
-	-	-	-	1	2079988-1	BUSHING, LCH5-12, MITSUBISHI	249
-	-	-	-	1	2119641-1	FEED CAM, AIR FEED	248
-	1	-	1	1	2119798-1	DETENT PIN	247
-77	-7	-6	-5	-2	PART NO	DESCRIPTION	ITEM NO

**ATLANTIC VERSION**  
Shown on sheets 1 of 4 & 2 of 4  
(Pacific version shown on sheets 3 of 4 & 4 of 4)

SET UP GAUGE	LOC	DIST	REVISIONS			
2119599-2	A	66	REV	DATE	BY	CHK
			1	13JAN2012	KH	SX
			2	08MAY2013	CC	UG
			A	06AUG2013	YY	UG
			A1	22MAY2014	JH	TE

-	1	-	1	1	1-22279-3	SPRING, COMPRESSION	246
-	-	1	-	-	2119759-1	RAM, AMP STYLE, END FEED, NON-ADJUST	245
-	1	1	1	1	2119082-9	CAM, SNAIL, INSULATION ADJUSTMENT	244
-	1	1	1	1	2079764-1	WASHER, WAVE SPRING, CREST-TO-CREST	243
-	1	1	1	1	2119083-1	RETAINER, INSULATION DIAL	242
-	-	2	2	-	2168400-7	SHCS, LOW HEAD, RoHS, M5 X 10	240
-	-	-	-	1	2063440-2	AIR FEED MODULE	238
-	2	2	2	2	1-2079383-0	SCR, BHSC, RoHS (M3 X 6)	230
-	-	1	1	-	2119740-2	TAG, IDENTIFICATION	213
-	-	REFREF	-	-	1901697-1	FEED FINGER ASSEMBLY, EF	183
-	1	1	1	1	1-1976053-7	LOCATER BLOCK, TERMINAL	179
-	1	1	1	1	6-993111-6	PIN, SLOTTED SPRING 3.0 X 14.0	177
-	1	1	1	1	8-22280-7	SPRING, COMPRESSION	176
-	1	1	1	1	1752353-2	GUIDE PIN, HOLDDOWN	175
-	1	1	1	1	1901680-2	GUIDE PIN, HOLDDOWN	174
-	-	-	-	2	21045-3	RING, RETAIN, EXTERN, 3/16 CRESCENT	172
-	1	1	1	1	994969-1	MAGNET, RARE EARTH HIGH ENERGY	166
-	REFREF	REFREF	REFREF	REFREF	994970-2	COUNTER, MAGNETIC	164
-	-	-	-	1	240638-1	SPRING, FEED FINGER	163
-	-	-	-	1	3-23627-7	PIN, RETAIN, GRVD, 3/16 X .854	137
-	-	REFREF	-	-	SEE NOTE 4	MEMORY CHIP, PROGRAMMED	135
-	-	1	1	-	1633743-1	SERVO FEED LATCH ASM	133
-	1	1	1	1	455888-5	SPACER, CRIMPER	82
-	1	1	1	1	2119791-9	DEPRESSOR, WIRE	73
-	1	1	1	1	2119956-2	DOCUMENTATION PACKAGE	71
-	2	2	2	2	2-18032-2	SCR, SET, FLT POINT M3 X 10.0	70
-	1	1	1	1	2119943-1	WASHER, SPACER	69
-	1	-	-	1	2119740-1	TAG, IDENTIFICATION	67
-	2	2	2	2	2168078-1	SCREW, DRIVE, RH, RoHS, 2 x .188	66
-	1	1	1	1	1-1901681-5	HOLDDOWN, TERMINAL	65
-	1	-	1	1	2119793-1	LIMITER, ADJUSTMENT BOLT	63
-	3	-	3	3	992763-5	SCR, SET, SOC, CONE POINT, M3 X 4.0	62
-	1	1	1	1	2079383-4	SCR, BHSC, RoHS (M4 X 8)	60
-	4	4	4	4	2168400-4	SHCS, LOW HEAD, RoHS, M4 X 8	57
-	2	2	2	2	2168083-8	SCR, SKT HD CAP, RoHS, M4 X 16	56
-	2	2	2	2	5018030-2	NUT, HEX, REG, RoHS, M4	55
-	2	2	2	2	5018030-1	NUT, HEX, REG, RoHS, M3	54
-	2	2	2	2	986965-8	NUT, LOCK, HEX, TORQUE (M4)	53
-	1	1	1	1	1-5018030-0	NUT, HEX, REG, RoHS, M3.5	52
-	-	-	-	1	2119792-2	PAWL, EF, AIR	51
-	1	1	1	1	1-1752354-1	STANDOFF, HOLD-DOWN	50
-	-	-	-	1	18023-9	SCR, SKT HD CAP M4 X 6.0	49
-	1	1	1	1	2119655-5	APPLICATOR BASIC ASSEMBLY, EF	46
-	1	-	1	1	2119369-1	RAM, AMP STYLE, END FEED	44
-	1	1	1	1	2079383-7	SCR, BHSC, RoHS (M8 X 25)	41
-	1	-	1	1	2119645-1	DISC, NUMBERED FA WIRE ADJUSTMENT	40
-	1	-	1	1	2119957-1	APPLICATOR SHIM PACK	39
-	1	1	1	1	1-2119644-2	RAM WASHER, PRECISION	38
-	1	1	1	1	2119085-1	FA HEAD, ATLANTIC STYLE	37
-	1	-	1	1	2119092-1	BOLT, ADJUSTMENT	35
-	8	8	8	8	1-18028-2	WASHER, FLAT, REG M4	33
-	2	2	2	2	2168083-9	SCR, SKT HD CAP, RoHS, M4 X 20	31
-	2	2	2	2	1-2168083-0	SCR, SKT HD CAP, RoHS, M4 X 10	29
-	1	1	1	1	240639-1	STRIPPER (MACHINING)	27
-	2	2	2	2	1320906-1	STUD, THREADED	25
-	1	1	1	1	1752371-1	PLATE, STRIP GUIDE	24
-	2	2	2	2	2-22281-3	SPRING, COMPRESSION	22
-	1	1	1	1	1752373-4	DRAG	20
-	1	1	1	1	1901696-3	STRIP GUIDE, REAR	19
-	1	1	1	1	1901695-3	STRIP GUIDE, FRONT	18
-	4	4	4	4	1-2079383-1	SCR, BHSC, RoHS (M6 X 12)	17
-	1	1	1	1	1-240641-5	SPACER	16
-	1	1	1	1	1752360-1	SPACER, HOLD-DOWN	13
-	1	1	1	1	240644-1	PLATE, REAR SHEAR	11
-	-	-	-	-	-	-	10
-	1	1	1	1	2-690482-7	PLATE, FRONT SHEAR	9
-	1	1	1	1	1-1333219-1	ANVIL, COMBINATION	8
-	1	1	1	1	1-2217206-1	BLADE, SLUG	7
-	1	1	1	1	1-240641-0	SPACER	5
-	1	1	1	1	238009-1	BLOCK, FL CRIMPER SPACER	4
-	1	1	1	1	2119582-3	CRIMPER, INSULATION F PREMIUM	3
-	1	1	1	1	455888-1	SPACER, CRIMPER	2
-	1	1	1	1	456408-6	CRIMPER, WIRE PREMIUM	1
-77	-7	-6	-5	-2	PART NO	DESCRIPTION	ITEM NO

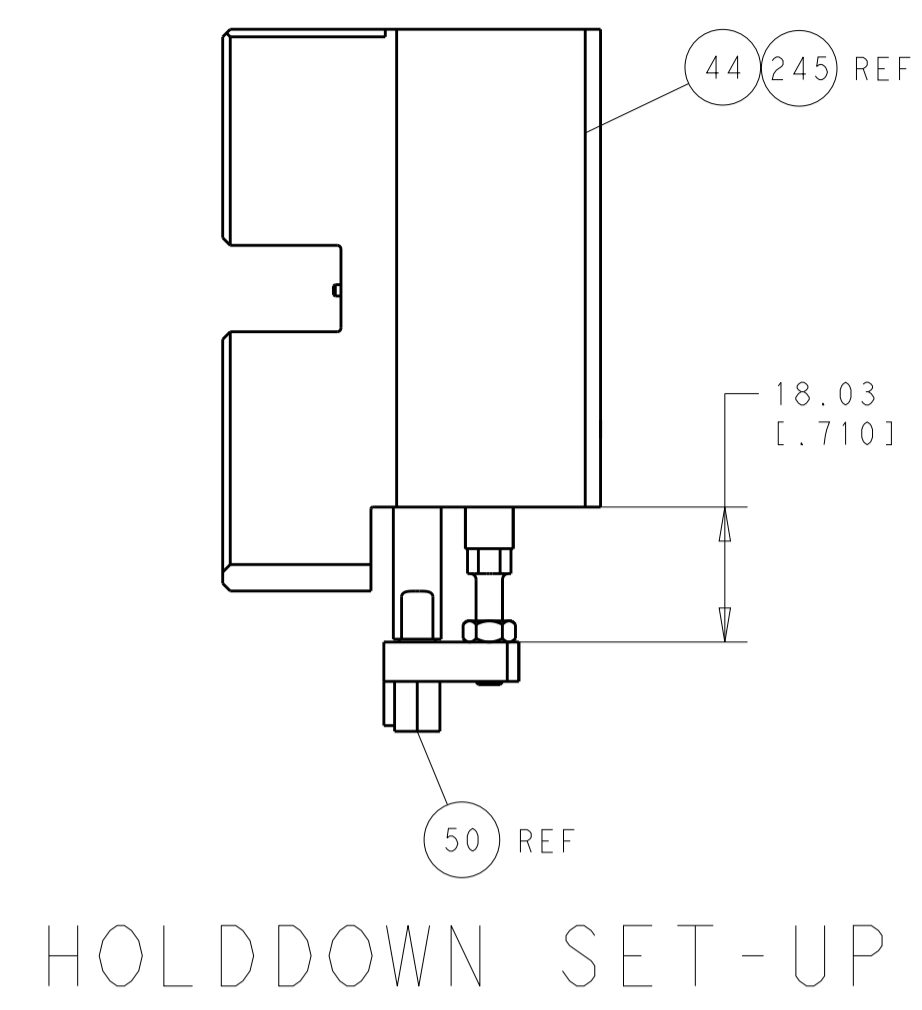
DIMENSIONS:		TOLERANCES UNLESS OTHERWISE SPECIFIED:		MATERIAL:		FINISH:		WEIGHT:		SCALE:		SHEET:		REV:	
mm	0 PLC ±.5	1 PLC ±0.5	2 PLC ±0.13	3 PLC ±0.013	4 PLC ±0.001	ANGLES ±.0001	FINISH				Customer Accessible Production Drawing	SCALE 1:1	SHEET 1 OF 4	REV A1	

LOC	DIST	REV	DATE	BY	APPV
A	66				

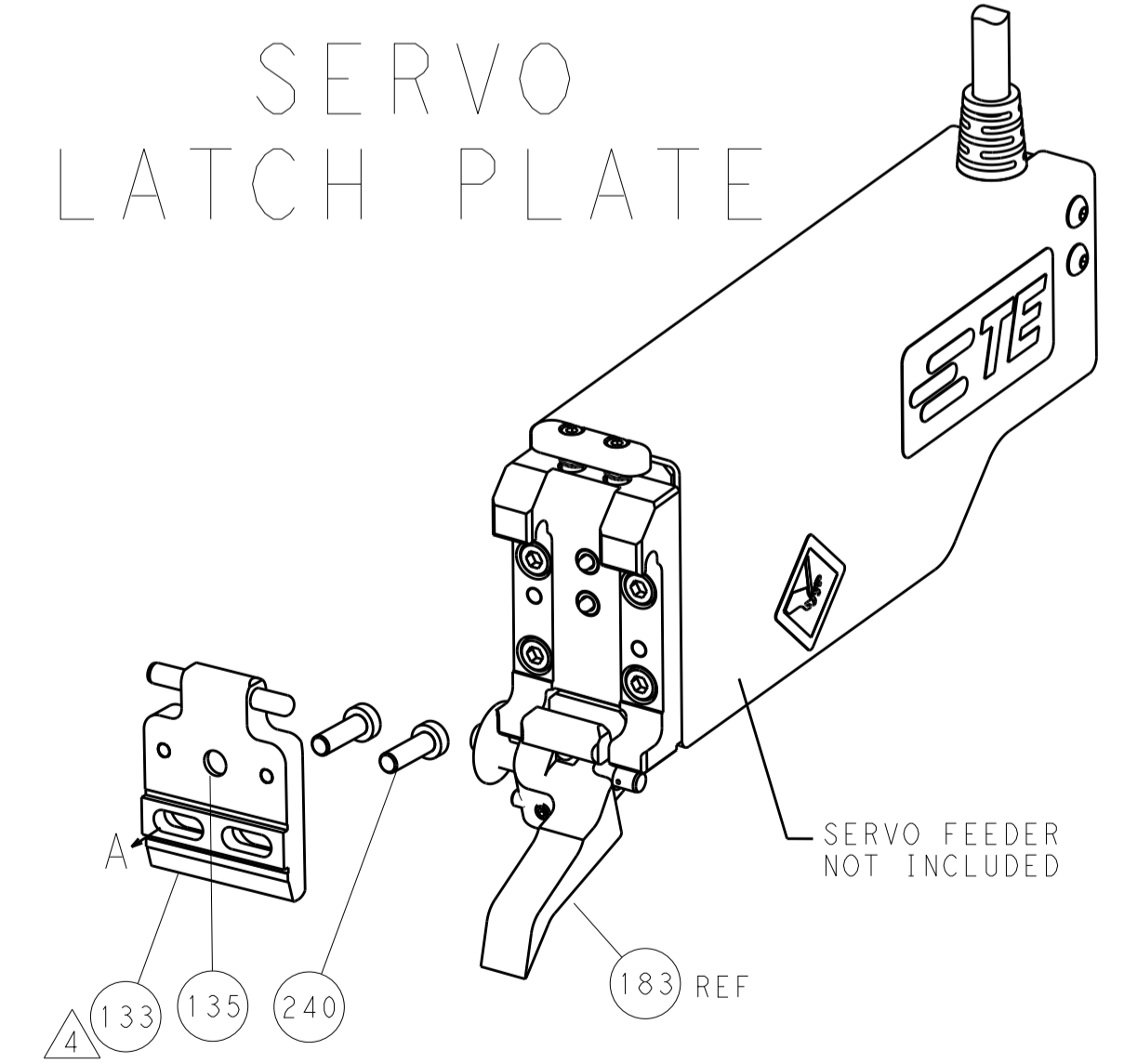
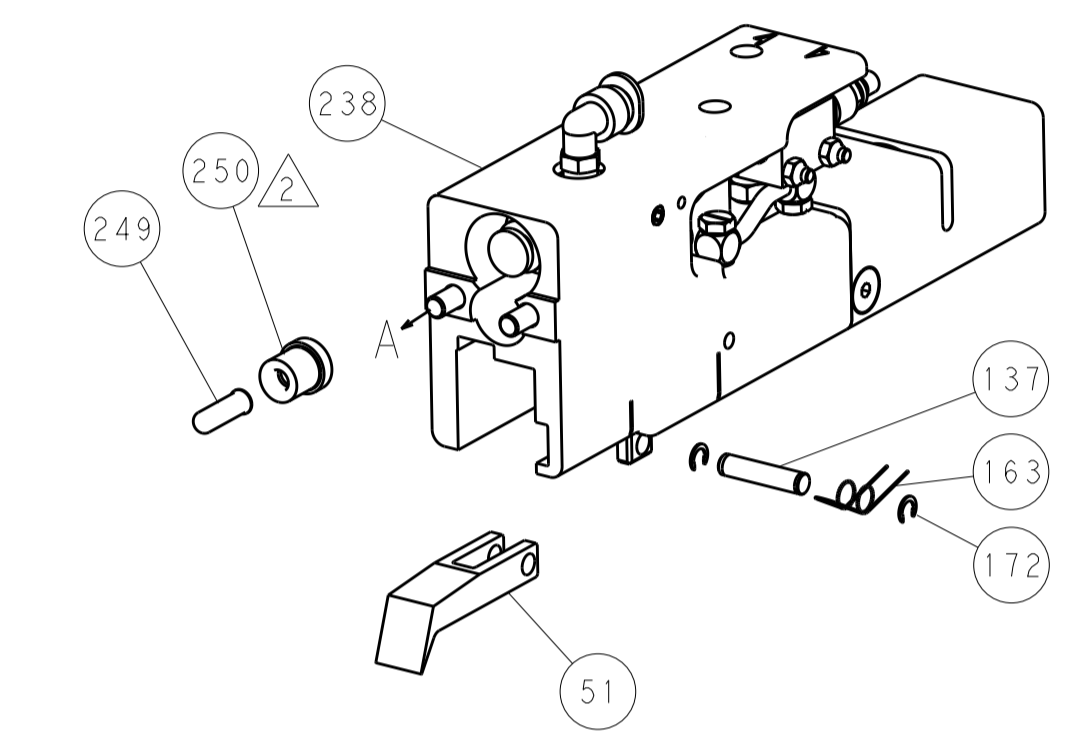
### FEED TYPE

### PNEUMATIC

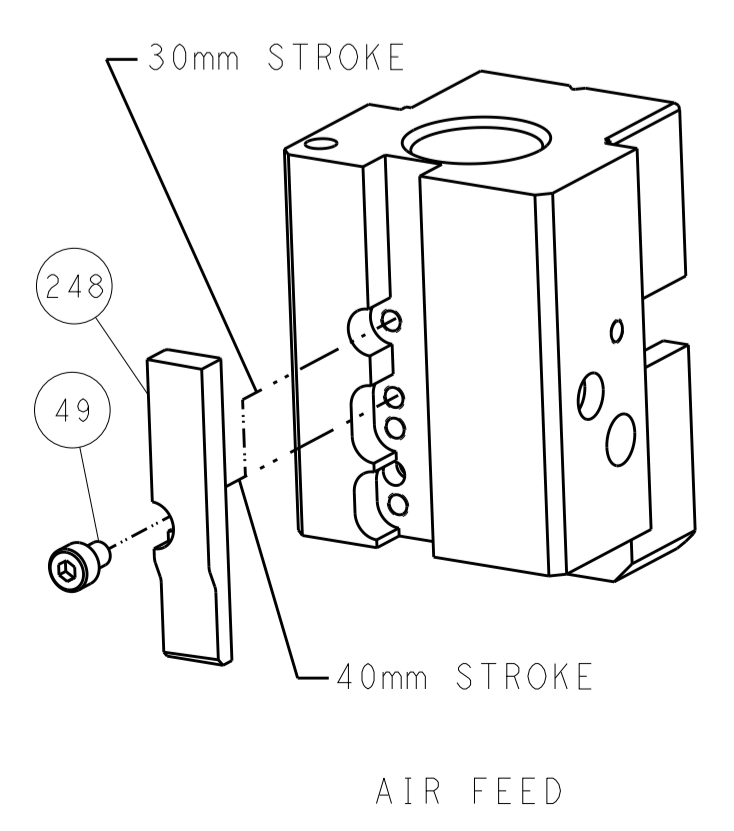
### SERVO LATCH PLATE



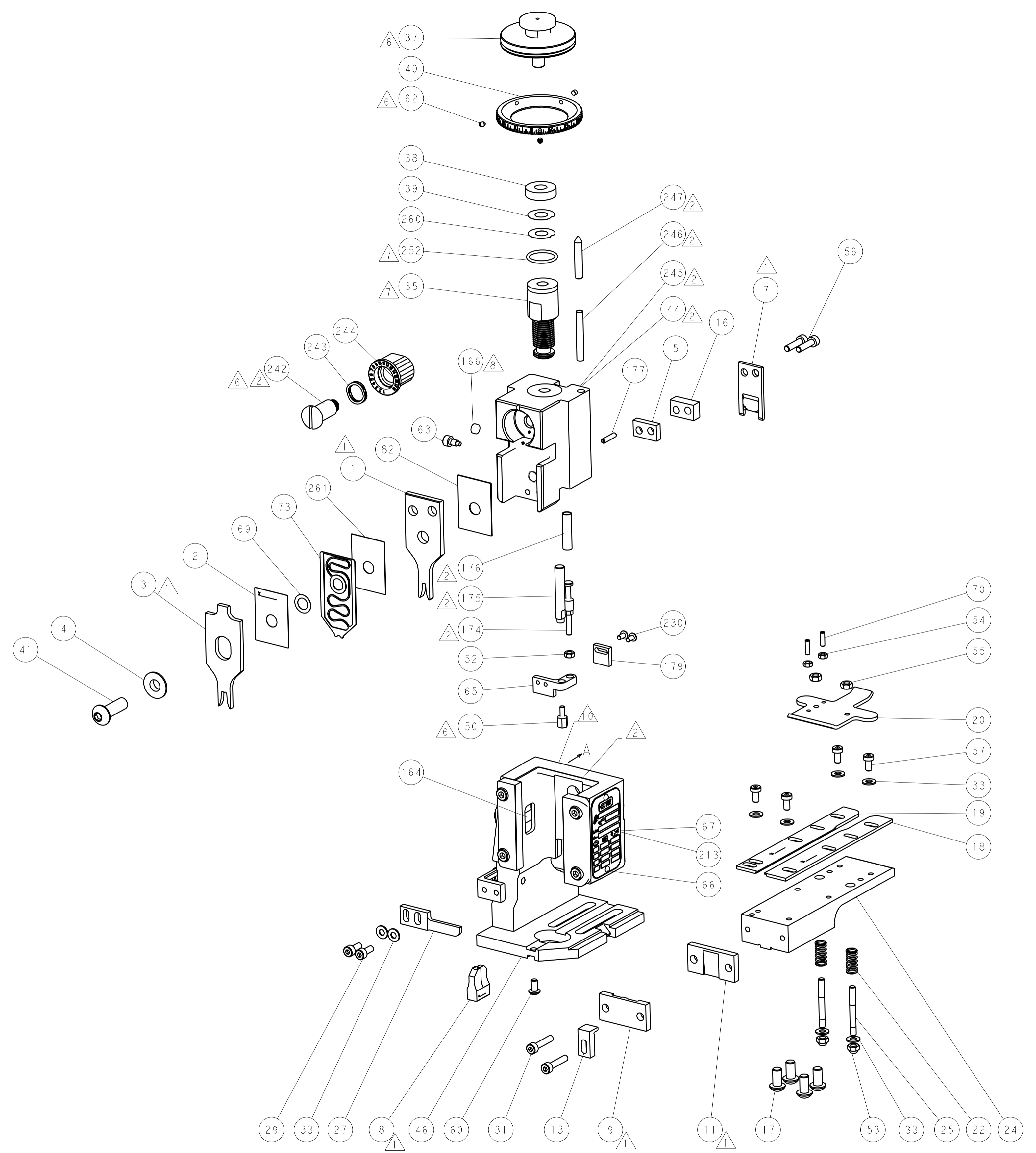
HOLDDOWN SET-UP



### CAM POSITION



AIR FEED



**ATLANTIC VERSION**  
 Shown on sheets 1 of 4 & 2 of 4  
 (Pacific version shown on sheets 3 of 4 & 4 of 4)

DIMENSIONS: mm 		TOLERANCES UNLESS OTHERWISE SPECIFIED: 0 PLC ±.5 1 PLC ±0.5 2 PLC ±0.13 3 PLC ±0.013 4 PLC ±0.0013 ANGLES ±.0001		DWN K. HUANG 13JAN2012 CHK S. XI 13JAN2012 APVD J. CRUZ 13JAN2012		NAME Ocean End Feed Applicator	
MATERIAL:		FINISH:		WEIGHT:		SIZE: A1 CAGE CODE: 00779 DRAWING NO: C=2150041	
Customer Accessible Production Drawing				SCALE: 1:1		SHEET 2 OF 4 REV A1	

PACIFIC VERSION TERMINATOR INTERFACE ADAPTER	PART NUMBER	REVISION	DESCRIPTION	FEED TYPE	APPLICATOR STYLE CONVERSION CHART						
					CONVERT TO	PART NUMBERS REQUIRED					
	2-2150041-2	A	FINE CRIMP HEIGHT ADJUST	PNEUMATIC	-	-	-	-	-	-	
	2-2150041-5	A	FINE CRIMP HEIGHT ADJUST	SERVO LATCH PLATE 4	SERVO LATCH PLATE	2119951-1	1901697-1	8-2150041-5	-	-	2168400-7 (QUANTITY 2)
					SMART APPLICATOR	2161326-1	-	8-2150041-4	-	-	-
	2-2150041-7	A	FINE CRIMP HEIGHT ADJUST	NONE	-	-	-	-	-	-	-
	7-2150041-7	A	CRIMP TOOLING KIT	-	-	-	-	-	-	-	-

APPLICATOR DATA		
CRIMP SIZE	TYPE	
WIRE 2.79 mm (.110)	F	
INSUL 4.57 mm (.180)	F	
APPL INSTRUCTIONS 408-10390		

TERMINAL DATA: TE TERMINAL TE CRIMP SPECIFICATION			
TERMINAL NAME: 250 SERIES TAB WITH LATCH			
WIRE STRIP LENGTH 4.80-5.60 mm (.189-.220 IN)	INSULATION DIAMETER RANGE Ø2.10-3.40 mm (.083-.134 IN)		
TERMINAL APPLICATION SPECIFICATION 114-5052	-		
TERMINALS APPLIED			
TE TERMINAL	TE TERMINAL	TE TERMINAL	TE TERMINAL
170030-1	170030-2	170030-3	170030-4
170030-5	170030-9	170340-1	170340-3
1-170340-3	-	-	-

WIRE SIZE	CRIMP HEIGHT mm [INCH]	CRIMP HEIGHT REFERENCE SETTING
14 AWG OR 2.00mm2	1.68 +/- 0.05 [.066 +/- .002]	6.8
1.50mm2	1.63 +/- 0.05 [.064 +/- .002]	7.0
16 AWG OR 1.25mm2	1.55 +/- 0.05 [.061 +/- .002]	8.1
18 AWG OR 0.85mm2	1.42 +/- 0.05 [.056 +/- .002]	9.4



- RECOMMENDED SPARE PARTS
- GREASE BEARING SURFACES LIGHTLY
- LUBRICATE DAILY PER THE APPLICATOR INSTRUCTION SHEET SUPPLIED WITH THE APPLICATOR.
- APPLICATOR SPECIFIC DATA TO BE ENTERED INTO BLANK MEMORY CHIP AT ASSEMBLY. SEE BELOW FOR PART NUMBER:  
PNEUMATIC FEED WITH "SMART APPLICATOR" CONVERSION: 8-2150041-4  
SERVO FEED WITH "FINE CRIMP HEIGHT ADJUST": 8-2150041-5
- ADJUSTMENT OF THE STRIPPER MAY BE REQUIRED WHEN MOVING THE APPLICATOR BETWEEN BENCH AND LEADMAKER APPLICATIONS.
- APPLY PART NUMBER 1-23419-5 LOCTITE TO THREADS OF ITEMS 50, 62 & 242.
- GREASE THREADS, GROOVE AND O-RING ON ITEMS 139 & 153.
- MAGNET, ITEM 166 MUST BE ORIENTED CORRECTLY IN ORDER TO PROPERLY ACTUATE THE COUNTER.
- CRIMP HEIGHT REFERENCE SETTING WAS THE SETTING USED WHEN THE APPLICATOR WAS QUALIFIED AT THE FACTORY. ADJUSTMENT MAY BE NECESSARY WHEN RUNNING APPLICATOR IN THE FIELD.
- TERMINAL PITCH NOT COMPATIBLE WITH MECHANICAL FEED.

**\*WARNING**  
ON INSTALLATION, SET WIRE DISC, ITEM 40 TO LARGEST WIRE SIZE SETTING. USE OF SETTINGS BELOW MINIMUM REQUIRED CRIMP HEIGHT SETTING WILL CAUSE DAMAGE TO CRIMP TOOLING.

ITEM NO	PART NO	DESCRIPTION	ITEM NO
261	455888-3	SPACER, CRIMPER	
251	2119782-1	FINE ADJUST HEAD ASM, PACIFIC STYLE	
250	2119640-1	PUSH ROD, AIR FEED	
249	2079988-1	BUSHING, LCH5-12, MISUMI	
246	1-22279-3	SPRING, COMPRESSION	
244	2119082-9	CAM, SNAIL, INSULATION ADJUSTMENT	
-77-27-25-22	PART NO	DESCRIPTION	ITEM NO

PACIFIC VERSION  
Shown on sheets 3 of 4 & 4 of 4  
(Atlantic version shown on sheets 1 of 4 & 2 of 4)

SET UP GAUGE	LOC	DIST	REVISIONS			
2119599-2	A	66	REV	DATE	OWN	APPV
			-	SEE SHEET 1	-	-

REV	DATE	OWN	APPV	DESCRIPTION	DATE	OWN	APPV
-	1 1 1			2079764-1	WASHER, WAVE SPRING, CREST-TO-CREST		243
-	1 1 1			2119083-1	RETAINER, INSULATION DIAL		242
-	2 -			2168400-7	SHCS, LOW HEAD, RoHS, M5 X 10		240
-	- - 1			2063440-2	AIR FEED MODULE		238
-	2 2 2			1-2079383-0	SCR, BHSC, RoHS (M3 X 6)		230
-	- 1 -			2119740-2	TAG, IDENTIFICATION		213
-	4 4 4			2079383-9	SCR, BHSC, RoHS (M6 X 20)		186
-	- REF -			1901697-1	FEED FINGER ASSEMBLY, EF		183
-	1 1 1			1-1976053-7	LOCATOR BLOCK, TERMINAL		179
-	1 1 1			6-993111-6	PIN, SLOTTED SPRING 3.0 X 14.0		177
-	1 1 1			8-22280-7	SPRING, COMPRESSION		176
-	1 1 1			1752353-2	GUIDE PIN, HOLDDOWN		175
-	1 1 1			1901680-2	GUIDE PIN, HOLDDOWN		174
-	- - 2			21045-3	RING, RETAIN, EXTERN, 3/16 CRESCENT		172
-	1 1 1			994969-1	MAGNET, RARE EARTH HIGH ENERGY		166
-	REF REF REF			994970-2	COUNTER, MAGNETIC		164
-	- - 1			240638-1	SPRING, FEED FINGER		163
-	1 1 1			8-21084-1	O-RING, .801 ID, .070 DIA. MAT.		153
-	- - 1			2119641-2	FEED CAM, AIR FEED		152
-	1 1 1			2119798-2	DETENT PIN		145
-	1 1 1			2079383-8	SCR, BHSC, RoHS (M4 X 16)		144
-	- - -			2119653-2	FEED CAM, POST FEED		142
-	1 1 1			2119655-6	APPLICATOR BASIC ASSEMBLY, EF		141
-	1 1 1			2119651-1	RAM, ASIAN STYLE, END FEED		140
-	1 1 1			2119092-2	BOLT, ADJUSTMENT		139
-	- - 1			3-23627-7	PIN, RETAIN, GRVD, 3/16 X .854		137
-	- REF -			SEE NOTE 4	MEMORY CHIP, PROGRAMMED		135
-	- 1 -			1633743-1	SERVO FEED LATCH ASM		133
-	1 1 1			455888-5	SPACER, CRIMPER		82
-	1 1 1			2119791-9	DEPRESSOR, WIRE		73
-	1 1 1			2119956-2	DOCUMENTATION PACKAGE		71
-	2 2 2			2-18032-2	SCR, SET, FLT POINT M3 X 10.0		70
-	1 1 1			2119943-1	WASHER, SPACER		69
-	1 - 1			2119740-1	TAG, IDENTIFICATION		67
-	2 2 2			2168078-1	SCREW, DRIVE, RH, RoHS, 2 x .188		66
-	1 1 1			1-1901681-5	HOLDDOWN, TERMINAL		65
-	1 1 1			2119793-1	LIMITER, ADJUSTMENT BOLT		63
-	3 3 3			992763-5	SCR, SET, SOC, CONE POINT, M3 x 4.0		62
-	4 4 4			2168400-4	SHCS, LOW HEAD, RoHS, M4 X 8		57
-	2 2 2			2168083-8	SCR, SKT HD CAP, RoHS, M4 X 16		56
-	2 2 2			5018030-2	NUT, HEX, REG, RoHS, M4		55
-	2 2 2			5018030-1	NUT, HEX, REG, RoHS, M3		54
-	2 2 2			986965-8	NUT, LOCK, HEX, TORQUE (M4)		53
-	1 1 1			1-5018030-0	NUT, HEX, REG, RoHS, M3.5		52
-	- - 1			2119792-2	PAWL, EF, AIR		51
-	1 1 1			1-1752354-1	STANDOFF, HOLD-DOWN		50
-	- - 1			18023-9	SCR, SKT HD CAP M4 X 6.0		49
-	1 1 1			2079383-7	SCR, BHSC, RoHS (M8 X 25)		41
-	1 1 1			2119645-1	DISC, NUMBERED FA WIRE ADJUSTMENT		40
-	1 1 1			2119957-1	APPLICATOR SHIM PACK		39
-	1 1 1			1-2119644-2	RAM WASHER, PRECISION		38
-	8 8 8			1-18028-2	WASHER, FLAT, REG M4		33
-	2 2 2			2168083-9	SCR, SKT HD CAP, RoHS, M4 X 20		31
-	2 2 2			1-2168083-0	SCR, SKT HD CAP, RoHS, M4 X 10		29
-	1 1 1			240639-1	STRIPPER (MACHINING)		27
-	2 2 2			1320906-1	STUD, THREADED		25
-	1 1 1			1752371-1	PLATE, STRIP GUIDE		24
-	2 2 2			2-22281-3	SPRING, COMPRESSION		22
-	1 1 1			1752373-4	DRAG		20
-	1 1 1			1901696-3	STRIP GUIDE, REAR		19
-	1 1 1			1901695-3	STRIP GUIDE, FRONT		18
-	1 1 1			1-240641-5	SPACER		16
-	1 1 1			1752360-1	SPACER, HOLD-DOWN		13
-	1 1 1			240644-1	PLATE, REAR SHEAR		11
-	- - -			-	-		10
-	1 1 1			2-690482-7	PLATE, FRONT SHEAR		9
-	1 1 1			1-1333219-1	ANVIL, COMBINATION		8
-	1 1 1			1-2217206-1	BLADE, SLUG		7
-	1 1 1			1-240641-0	SPACER		5
-	1 1 1			238009-1	BLOCK, FL CRIMPER SPACER		4
-	1 1 1			2119582-3	CRIMPER, INSULATION F PREMIUM		3
-	1 1 1			455888-1	SPACER, CRIMPER		2
-	1 1 1			456408-6	CRIMPER, WIRE PREMIUM		1

DIMENSIONS:		TOLERANCES UNLESS OTHERWISE SPECIFIED:	
mm	0 PLC ±.5	1 PLC ±.13	5 PLC ±.013
	1 PLC ±.05	4 PLC ±.0001	ANGLES ±.0001
	FINISH		

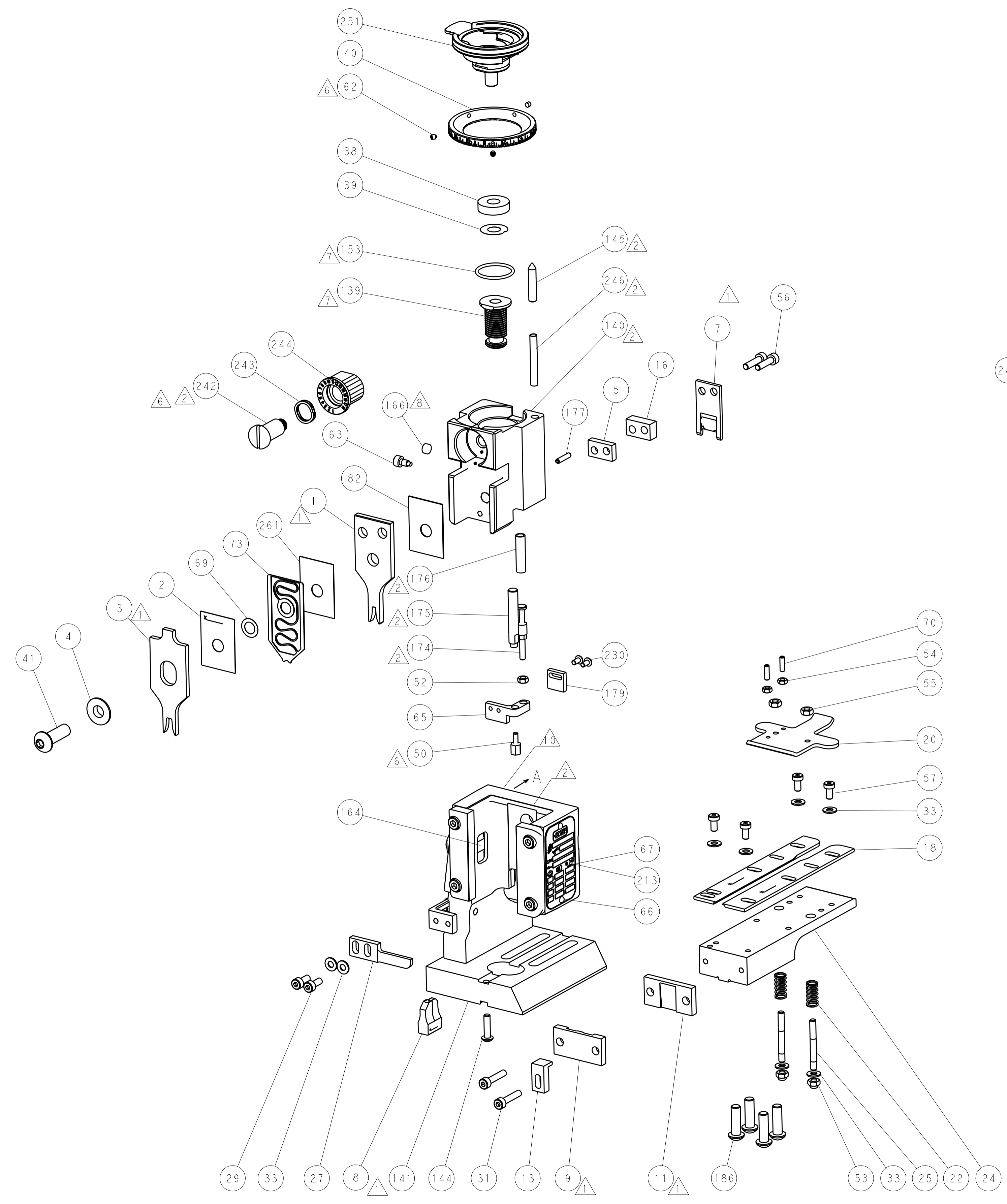
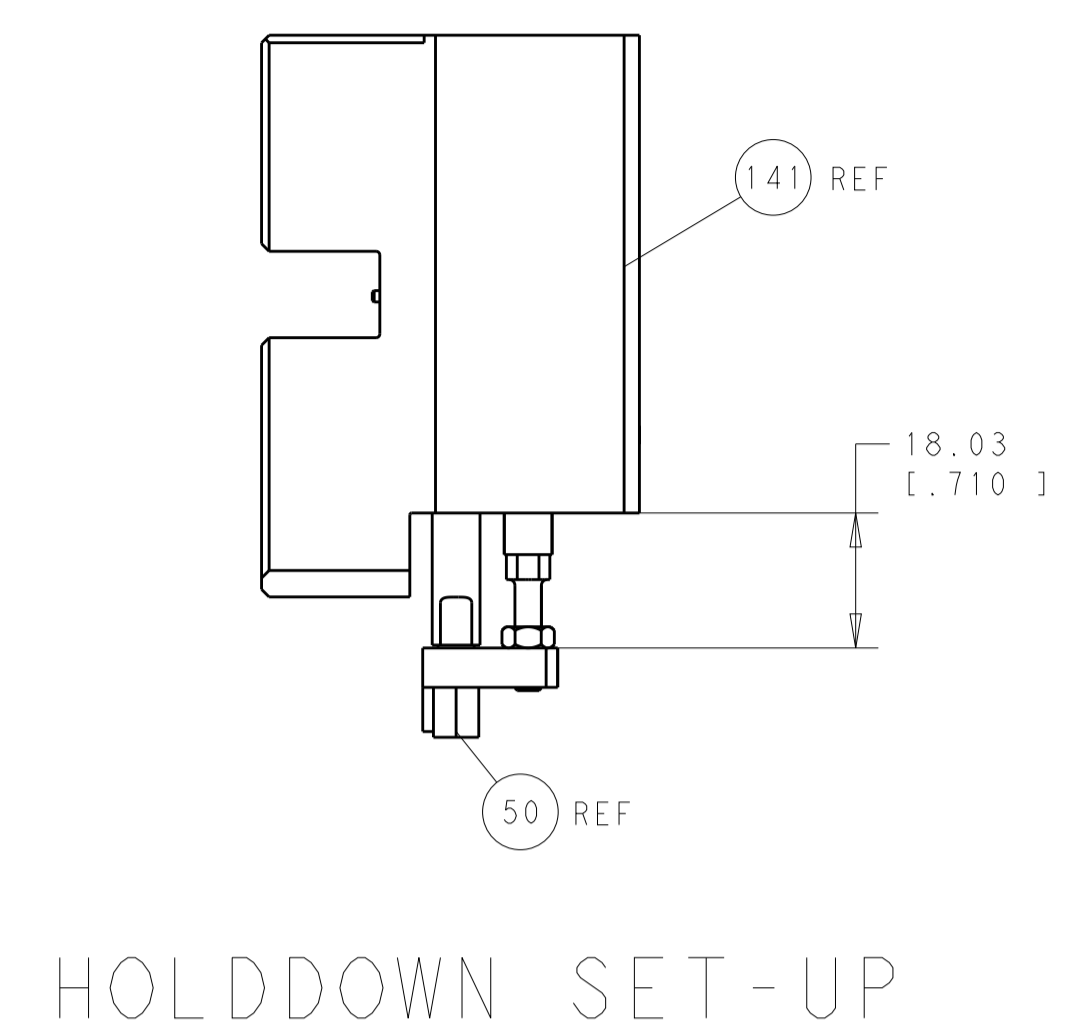
OWNER	DATE	REV	DESCRIPTION
H. HUANG	13JAN2012	1	CHK
S. XI	13JAN2012	2	CHK
I. CRUZ	13JAN2012	3	APPV

PRODUCT SPEC	APPLICATION SPEC	SIZE	CAGE CODE	DRAWING NO	RESTRICTED TO
-	-	A1	00779	©=2150041	-

SCALE	SHEET	OF	REV
1:1	3	4	A1

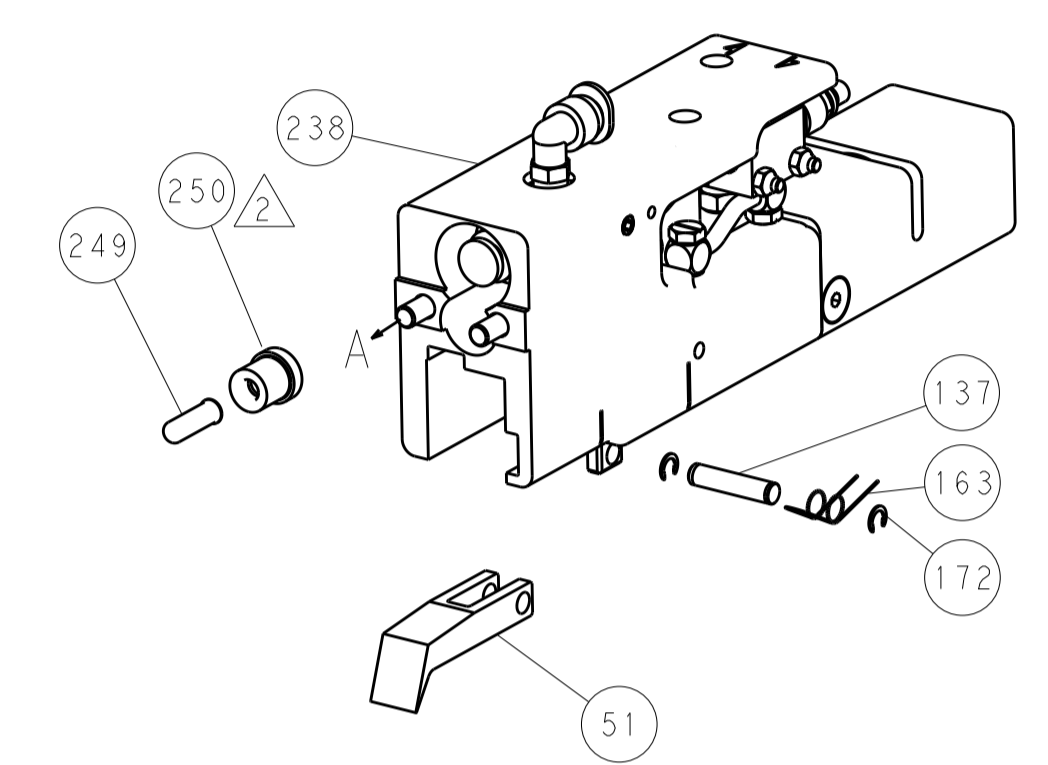
Customer Accessible Production Drawing

LOC		DIST		REVISIONS			
A	66	P	LTM	DESCRIPTION	DATE	DWN	APVD
		-	-	SEE SHEET 1	-	-	-

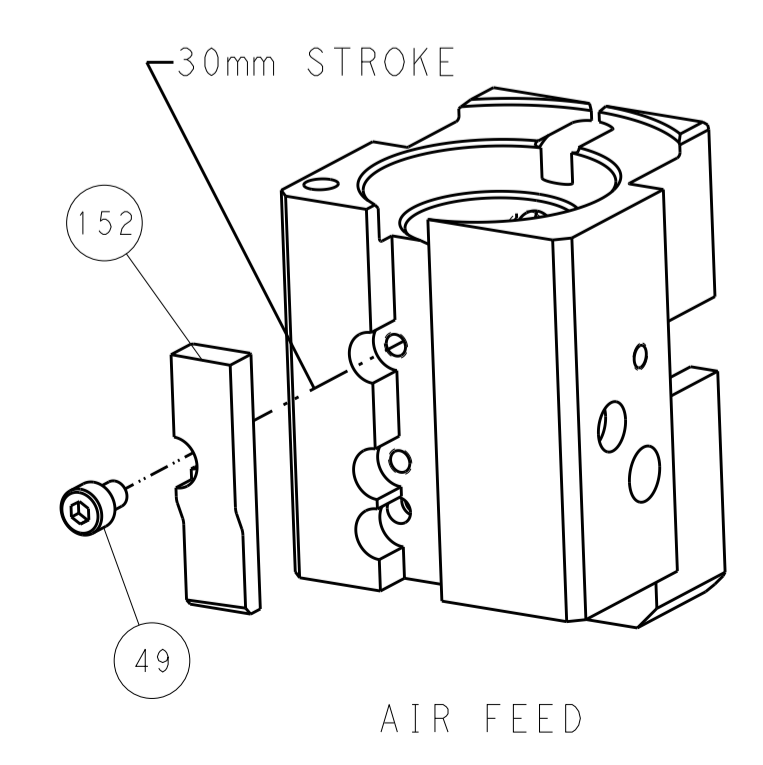


FEED TYPE

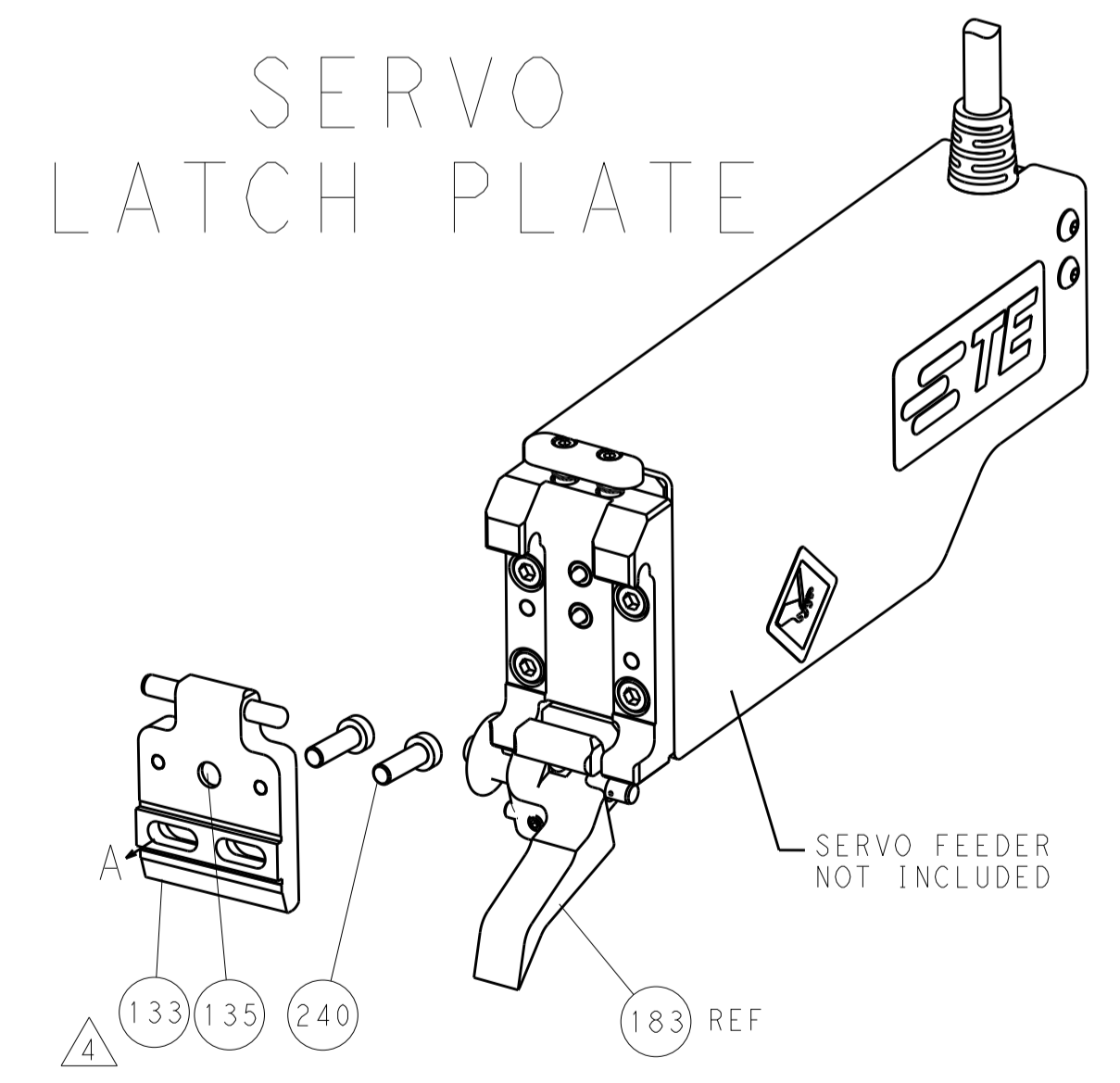
PNEUMATIC



CAM POSITION



SERVO LATCH PLATE



PACIFIC VERSION  
 Shown on sheets 3 of 4 & 4 of 4  
 (Atlantic version shown on sheets 1 of 4 & 2 of 4)

DIMENSIONS:		TOLERANCES UNLESS OTHERWISE SPECIFIED:		DWN R. HUANG 13JAN2012		STE TE Connectivity Harrisburg, PA 17105-3608	
mm	0 PLC ±.5	1 PLC ±0.5	2 PLC ±0.13	3 PLC ±0.013	4 PLC ±0.001	APVD S. XI 13JAN2012	NAME Ocean End Feed Applicator
MATERIAL	FINISH	ANGLES	WEIGHT	SCALE	1:1	SIZE A1	CAGE CODE 00779
Customer Accessible Production Drawing				SCALE		SHEET 4 OF 4	