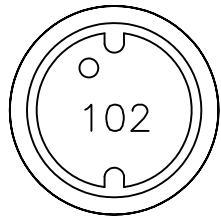
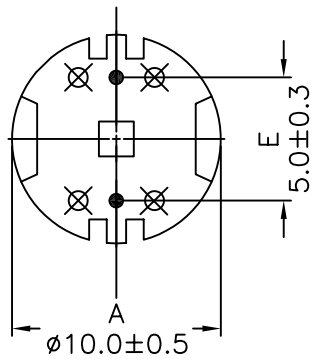
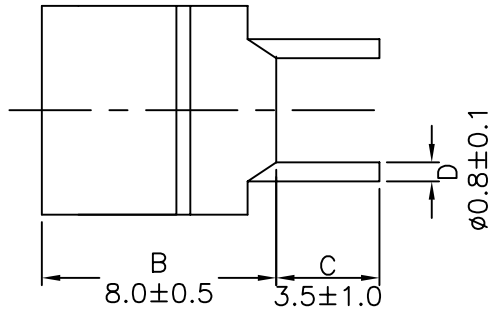


### 1. Mechanical Dimensions:

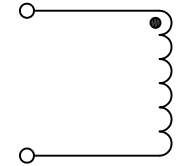


Top View



Bottom View

### 2. Schematic:



### 3. Electrical Specifications: @25°C

INDUCTANCE: 1000uH±10% @1KHz 1.0V

Q: tbd Min @1KHz 1.0V

DCR: 2.30 Ohms Max

RATED CURRENT: 0.40A<sub>dc</sub> Max (25% OCL drop/40°C Temp Rise)

**PRELIMINARY**

**Notes:**

1. Solderability: Leads shall meet MIL-STD-202G, Method 208H for solderability.
2. Flammability: UL94V-0
3. ASTM oxygen index: > 28%
4. Insulation System: Class F 155°C. UL file E151556
5. Operating Temperature Range: All listed parameters are to be within tolerance from -30°C to +105°C
6. Storage Temperature Range: -55°C to +125°C
7. Aqueous wash compatible
8. Electrical and mechanical specifications 100% tested
9. RoHS Compliant Component

Doc. Rev. A/1

<b>XFMRs Inc.</b> www.XFMRs.com	Title: <b>Shielded Power Inductor</b>		
	UNLESS OTHERWISE SPECIFIED TOLERANCES: .xx ±0.25 Dimensions in MM	P/N: XFRCR108D-102K	REV. A
SHEET 1 OF 1	DWN.	Feng	May-30-11
	APP.	YK Liao	May-30-11