

6

5

4

3

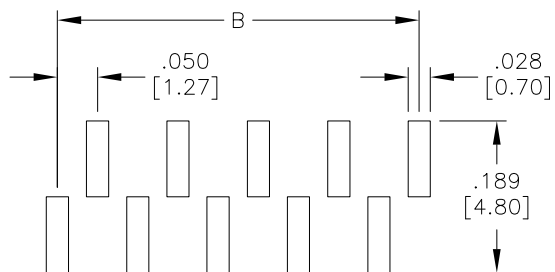
2

1

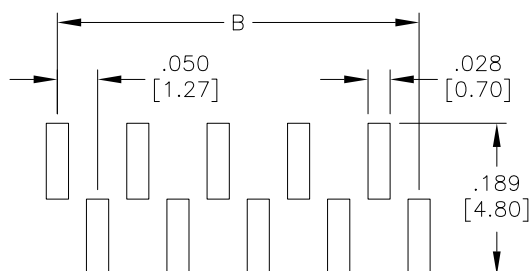
APPROVED: _____

DATE: _____ TITLE: _____

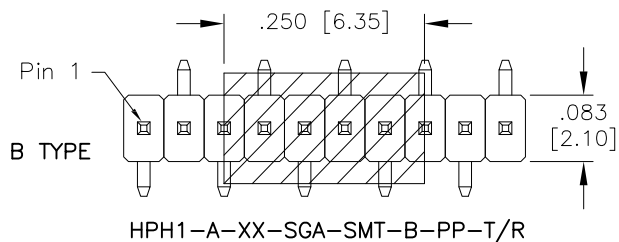
Rev	AWO #	Description	Date	Appr
-		RELEASED	3/29/16	



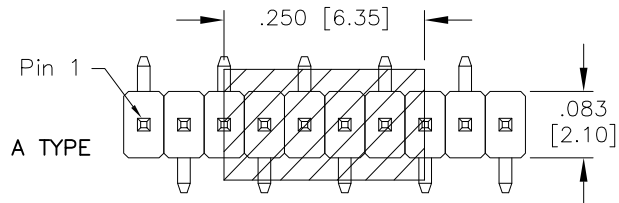
B TYPE
RECOMMENDED P.C.B LAYOUT



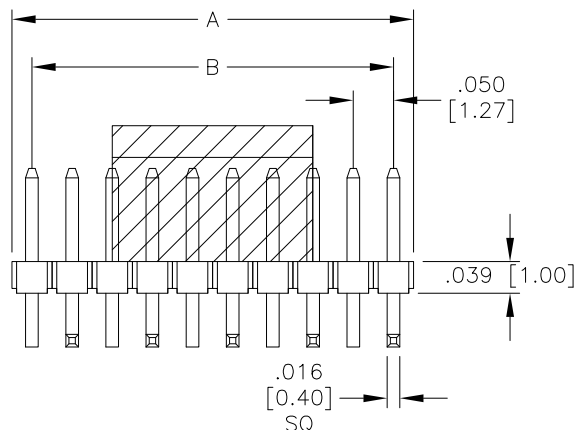
A TYPE
RECOMMENDED P.C.B LAYOUT



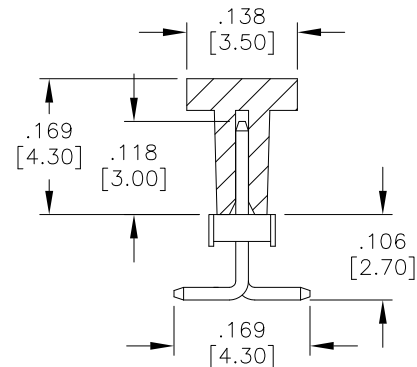
HPH1-A-XX-SGA-SMT-B-PP-T/R



HPH1-A-XX-SGA-SMT-A-PP-T/R



SQ
 Positions: 02 thru 50
 A= .050 [1.27] x No. of Positions -.008 [0.20]
 B= .050 [1.27] x No. of Spaces



SPECIFICATIONS:

Material:
 Insulator: Hi-Temp Thermoplastic, rated UL 94V-0
 Insulator color: Black

Contacts: Brass
 Plating:

Gold flash Nickel underplate on contact area,
 Tin over Copper underplate on solder tails

Electrical:
 Current rating: 1 Amp max.
 Contact resistance: 20 mohms max @ 100mA.
 Insulation resistance: 5,000 Mohms min @ 500 VDC.
 Dielectric withstanding voltage: 500 VAC for 1 minute

Temperature Rating:
 Operating temperature: -40°C to +105°C

Environmental:
 Lead free, RoHS compliant



PACKAGED ON TAPE & REEL

UNLESS OTHERWISE SPECIFIED
 ALL DIMENSIONS ARE INCHES [MM]
 TOLERANCES: EXCEPT AS NOTED

INCHES	HOLES
.X ± .10	Ø.X ± .10
.XX ± .020	Ø.XX ± .015
.XXX ± .015	Ø.XXX ± .010

ADAM TECH

909 Rahway Avenue, Union, NJ 07083
 Phone: 908-687-5000 Fax: 908-687-5710

TITLE		.050 [1.27] SINGLE ROW PIN HEADER, SMT	
SIZE	PART NO.	REV.	
X	HPH1-A-XX-SGA-SMT-X-PP-T/R	-	
REF:	S00059T	SCALE:	NTS
		SHEET 1 OF 1	

APPROVALS		DATE
DRAWN	AY	3/29/16
CHECKED	TW	3/29/16
APPROVED		

6

5

4

3

2

1