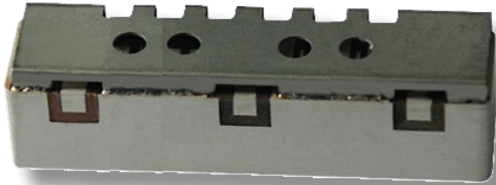


UPD: Universal-footprint Pico Cell Duplexers

Carrier-grade pico-cell performance without compromises



CTS Electronic Components introduces the new high-reliability, surface-mounted ceramic filters that delivers the isolation and rejection required for $\leq 0.5W$ at Antenna carrier-grade Pico Cells and remote radio heads including applications needing multi-band co-location and linearized PAs.

Product family offers versions for all of the major frequency bands while sharing a common PCB layout enabling a platform solution.

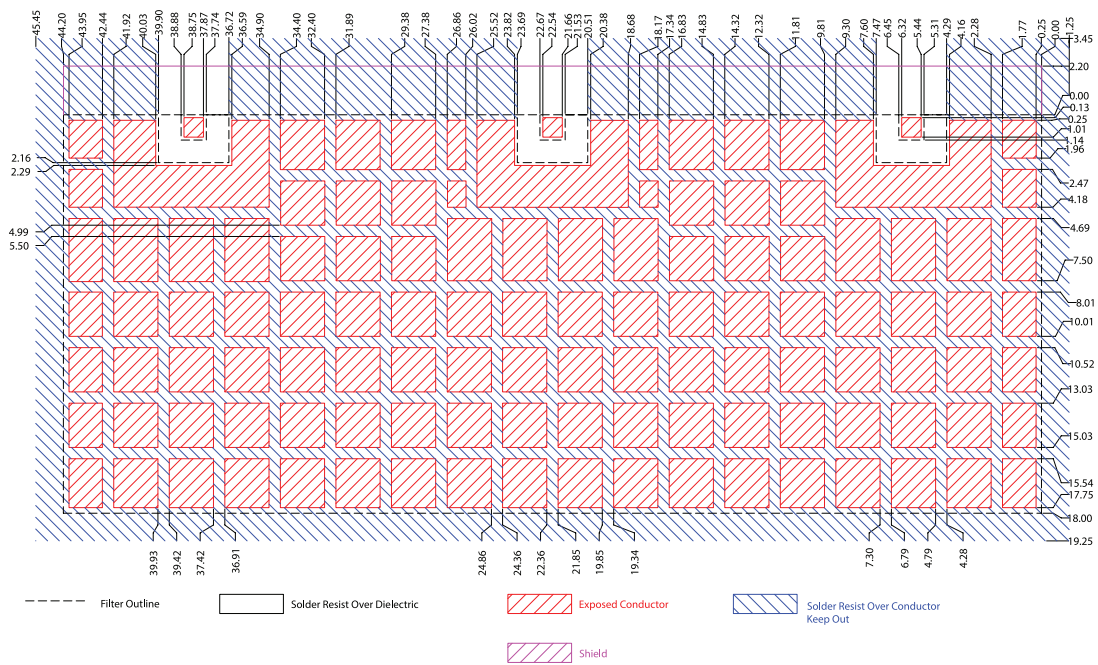
Model	Freq Band#	DL Freq Range [MHz]	UL Freq Range [MHz]
UPD001A	1	2110 - 2170	1920 - 1980
UPD002A	2	1930-1990	1850 - 1910
UPD003A	3	1805 - 1880	1710 - 1785
UPD004A	4	2110 - 2155	1710 - 1755
UPD005A	5	869 - 894	824 - 849
UPD007A	7	2620 - 2690	2500 - 2570
UPD008A	8	925 - 960	880 - 915
UPD010A	4 10	2110 - 2180	1710 - 1780
UPD012A	12 17	728 - 746	698 - 716
UPD013A	13	746 - 756	777 - 787
UPD014A	14	758 - 768	788 - 798
UPD020A	20	791 - 821	832 - 862
UPD025A	2 25	1930-1995	1850 - 1915
UPD026A	5 26	859 - 894	814 - 849
UPD027A	27	851 - 869	806 - 824
UPD028A	28	758 - 803	703 - 748
UPD030A	30	2350 - 2360	2305-2315

Insertion Loss (5MHz avg)	< 3.0 dB
Uplink Atten	63 dB typ 61 dB min
Downlink Atten	57 dB typ 55 dB min
Return Loss	> 12.0 dB
Input Power Rating	1.5W Avg 15W Peak
Size (L x W x H) (incl shield)	44.2 x <20.0 x 6.5mm
Max Weight	<18 g
Temperature Range	-40°C to +85°C

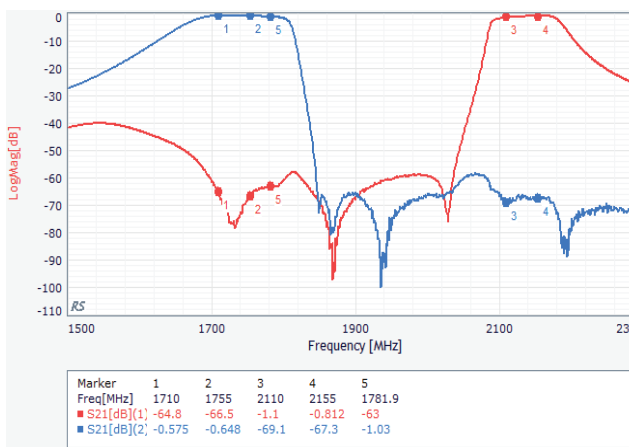


Universal PCB Footprint for all UPD frequency versions:

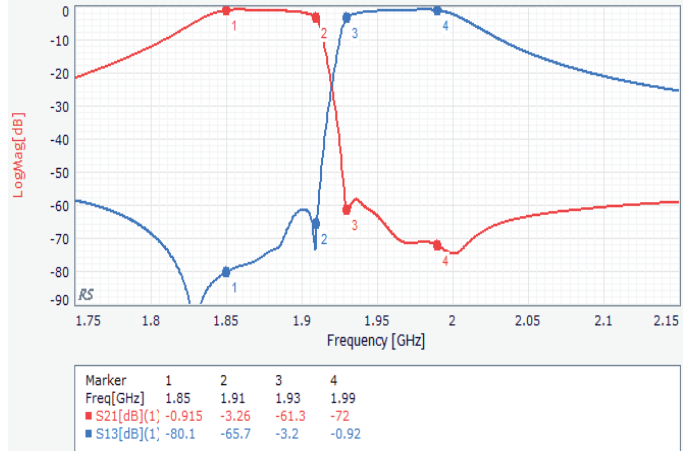
(a smaller universal footprint can be supported for frequencies >1.7GHz)



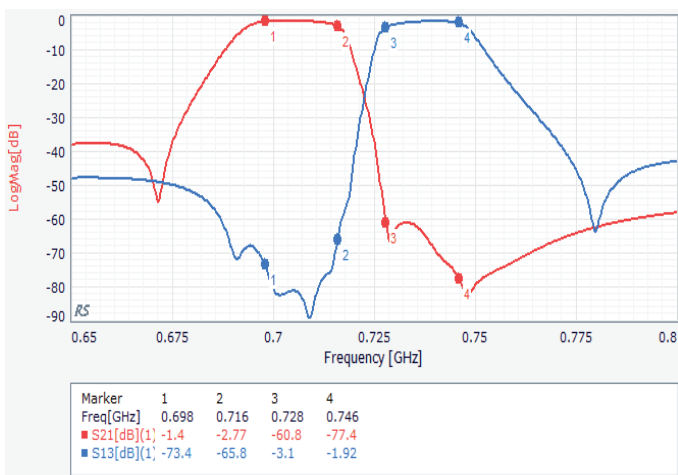
UPD004A (measured)



UPD002A (simulated)



UPD012A (simulated)



UPD008A (simulated)

