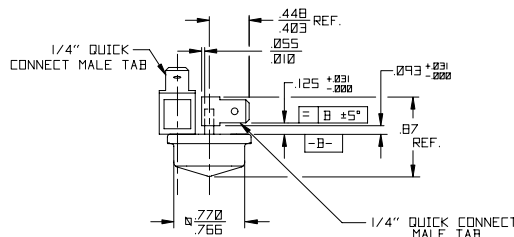
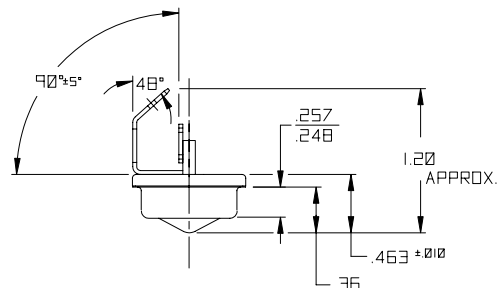
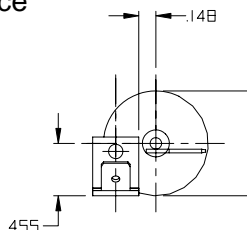


# Part No: T03-1054 T03 Series Tip Over Switch – Mercury



- Features:**
- \* Meets UL Heat Rise Specification
  - \* Un-Insulated
  - \* Form: NC/SPST/Vertical Mount as shown
  - \* Angles Referenced from vertical
  - \* Dual Male Fastons w/ Mounting Boss
  - \* Hermetically Sealed
  - \* Small Package Size
  - \* High Current Capability
  - \* Low Contact Resistance
  - \* Long Life



Shown in normally closed position.  
Tip over switches "break" when the electrode is tilted from the vertical and "make" when returned to the vertical.

Drawing dimensions in inches.

Must Break Angle * :	25° to 45° in any direction When switch is inverted there shall be no continuity * from vertical 0° reference
Switch Ratings:	
Max Switching Voltage:	240VAC
Max Switching Current:	12.5A, 1500W/120V resistive, 1500W Tungsten, 1/6hp 120V
Initial Contact Resistance (Max):	25 milli Ohms
Stand Off Voltage (contact to contact):	1240VAC
Operating Temperature:	-37° to 220° F / -38° to 105° C
Storage Temperature:	-40° to 356° F / -40° to 180° C
Typical number of operations at specified load:	3,000,000
G-Force Activation G-Level/Range:	N/A
Dimensions:	
Weight per 100pcs. Lbs / Kgs:	3.20 / 1.45
Body Length (less leads). Inches / Millimeters:	0.87 / 22.1
Maximum Diameter. Inches / Millimeters:	0.94 / 24.0
Materials:	
Termination Type:	¼" Male Quick Connect
Lead wire length/skive/termination:	N/A
Finish:	Nickel



© American Electronic Components Inc 2006

**American Electronic Components Inc.,**  
1101 Lafayette Street, Elkhart, Indiana. USA  
Tel: +1-574-295-6330 Fax: +1-574-293-8013  
Email: [sales@aecensors.com](mailto:sales@aecensors.com)  
<http://www.aecensors.com>