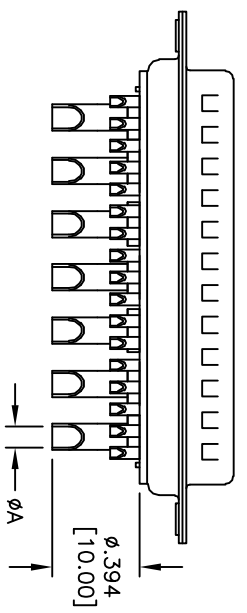
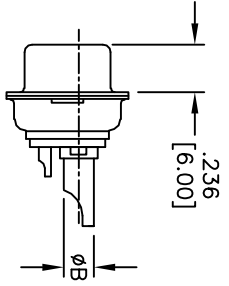
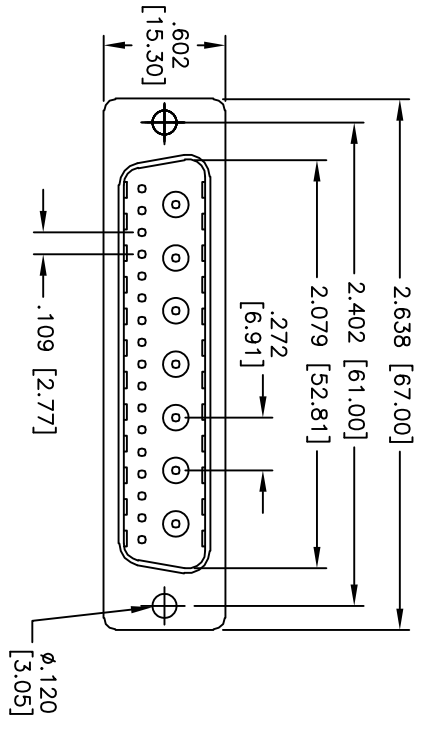


Rev	AWO #	Description	Date	Appr
-		RELEASED	5/30/12	

APPROVED: _____
 DATE: _____ TITLE: _____



ADAM P/N	Current Rating	Dim ϕA	Dim ϕB
D24W7-PDP-6-1	40 Amps	ϕ .181 [4.60]	ϕ .217 [5.50]
D24W7-PDP-5-1	30 Amps	ϕ .146 [3.70]	ϕ .181 [4.60]
D24W7-PDP-4-1	20 Amps	ϕ .106 [2.70]	ϕ .142 [3.60]
D24W7-PDP-3-1	10 Amps	ϕ .067 [1.70]	ϕ .098 [2.50]

SPECIFICATIONS:
 Material:
 Insulator: Thermoplastic, glass filled, rated UL 94V-0
 Insulator color: White
 Contacts: Brass
 Shell: Steel, Tin plated
 Plating:
 Gold flash over Nickel underplate overall
 Electrical:
 Current rating: 10 – 40 Amps
 Contact resistance: 10 mohms max
 Insulation resistance: 5,000 Mohms min
 Dielectric withstanding voltage: 1,000 VAC for 1 minute
 Temperature Rating:
 Operating temperature: -55°C to +125°C
 Environmental:
 Lead free, RoHS compliant

ADAM TECH

909 Rahway Avenue, Union, NJ 07083
 Phone: 908-687-5000 Fax: 908-687-5710

TITLE: D-SUB CONNECTOR, SIGNAL-POWER TYPE, PLUG, SOLDER CUP, PCB

UNLESS OTHERWISE SPECIFIED ALL DIMENSIONS ARE INCHES [MM]	
INCHES	HOLDS
.X ± .10	ϕ X ± .10
.XX ± .020	ϕ XX ± .015
.XXX ± .015	ϕ XXX ± .010
APPROVALS	DATE
DRAWN AY	5/30/12
CHECKED OC	5/30/12
APPROVED	

SIZE	PART NO.	REV.
X	D24W7-PDP-X-1	-
REF: S000'9T	SCALE: NTS	SHEET 1 OF 1

