

FEATURES

Small size – Extended Life – Low cost

APPLICATIONS

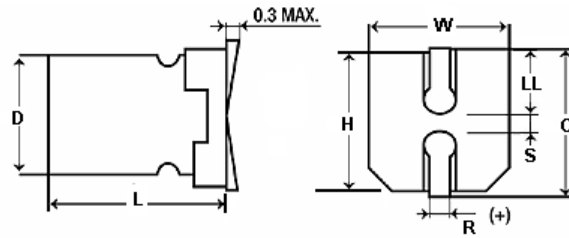
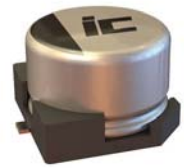
Filtering – Bypass – Coupling – Blocking

Operating Temperature Range		-40°C to +105°C (6.3 to 100WVDC) -25°C to +105°C (160 to 450WVDC)												
Capacitance Tolerance		+20% at 120 Hz, 20°C												
Surge voltage	WVDC	6.3	10	16	25	35	50	63	100	160	200	250	400	450
	SVDC	7.9	13	20	32	44	63	79	125	200	250	300	450	500
Dissipation Factor	WVDC	6.3	10	16	25	35	50	63	100	160	200	250	400	450
	tan δ	.3	.24	.2	.16	.14	.14	.18	.18	.2	.2	.2	.25	.25
	D>12.5	.35	.3	.34	.26	.22	.18	.14	.18	.2	.2	.2	.25	.25
Leakage current		2 Minutes .01CV or 3μA, Whichever is greater												
Low temperature stability Impedance ratio (120 Hz)	Rated WVDC	6.3	10	16	25	35	50	63	100	160-450				
	-25°C/+20°C	4	3	2	2	2	2	2	2	4				
	-40°C/+20°C	8	8	4	4	3	3	3	3	-				
Load Life		2000 hours at 105°C with rated WVDC												
		Capacitance change		≤30% of initial measured value										
		Dissipation factor		≤300% of maximum specified value										
		Leakage current		≤100% of maximum specified value										
Shelf Life		1000 hours at 105°C with no voltage applied												
		Capacitance change		≤30% of initial measured value										
		Dissipation factor		≤300% of maximum specified value										
		Leakage current		≤100% of maximum specified value										
Resistance to soldering heat		Capacitors placed on a 250°C hot plate for 30 seconds with their electrode terminations facing downward will fulfill the following conditions after being cooled to room temperature												
		Capacitance change		≤10% of initial measured value										
		Dissipation factor		≤100% of maximum specified value										
		Leakage current		≤100% of maximum specified value										
Ripple Current Multipliers		Frequency (Hz)												
		50	120	400	1k	10k	100k							
		0.7	1.0	1.17	1.38	1.5	1.5							

SVH

Surface Mount Capacitors

+105°C Long Life



D	L	W \pm 0.2	H \pm 0.2	C \pm 0.2	R	LL \pm 0.2	S \pm 0.2
4.0	5.4 \pm 0.3	4.3	4.3	5.0	0.5~0.8	1.8	1.0
5.0	5.4 \pm 0.3	5.3	5.3	6.0	0.5~0.8	2.1	1.4
6.3	5.4 \pm 0.3	6.6	6.6	7.3	0.5~0.8	2.4	2.2
6.3	7.7 \pm 0.3	6.6	6.6	7.3	0.5~0.8	2.4	2.2
8.0	10.5 \pm 0.3	8.3	8.3	9.0	0.7~1.0	2.9	3.1
10.0	10.5 \pm 0.3	10.3	10.3	11.0	0.7~1.0	3.2	4.5
12.5	13.5 \pm 0.5	13.0	13.0	15.0	0.7~1.1	4.8	4.4
12.5	16.0 \pm 0.5	13.0	13.0	15.0	0.7~1.1	4.8	4.4
16.0	16.5 \pm 0.5	17.0	17.0	19.0	0.7~1.1	6.3	6.4

ic ILLINOIS CAPACITOR

Your Global Source for World-Class Capacitors

© 2013 Illinois Capacitor, Inc.

North America
Tel: 847.675.1760
sales@illcap.com

Asia
Tel: 852.2793 0931
sales@illcap.com.hk

SVH

+105°C, Long Life, 2000 hours

Capacitance (µF)	WVDC	IC PART NUMBER	Maximum ESR (Ω) 120 Hz, +20°C	Maximum RMS Ripple Current (mA) 120 Hz, +105°C	Dims DxL (mm)
1	50	105SVH050MCR	232.1	6.3	4x5.4
2.2	50	225SVH050MCR	105.5	11	4x5.4
3.3	50	335SVH050MCR	70.33	14	4x5.4
3.3	450	335SVH450MTP	125.6	40	12.5x13.5
4.7	6.3	475SVH6R3MCR	10.82	31	4x5.4
4.7	35	475SVH035MCR	49.38	16	4x5.4
4.7	50	475SVH050MDR	49.38	19	5x5.4
4.7	450	475SVH450MTP	88.1843	45	12.5x13.5
6.8	35	685SVH035MCR	31.13	25	4x5.4
10	25	106SVH025MCR	26.53	13	4x5.4
10	50	106SVH050MER	23.21	30	6.3x5.4
10	200	106SVH200MTP	33.1573	80	12.5x13.5
10	400	106SVH400MTP	41.4466	50	12.5x13.5
10	450	106SVH450MTBW	41.4466	75	12.5x16
22	6.3	226SVH6R3MCR	22.61	22	4x5.4
22	16	226SVH016MCR	12.06	29	4x5.4
22	25	226SVH025MDR	12.06	23	5x5.4
22	35	226SVH035MER	10.55	44	6.3x5.4
22	50	226SVH050MEL	10.55	51	6.3x7.7
22	100	226SVH100MFE	13.56	100	8x10.5
22	200	226SVH200MTBW	15.0715	110	12.5x16
22	250	226SVH250MTP	15.0715	105	12.5x13.5
22	450	226SVH450MKQ	18.8394	85	16x16.5
33	6.3	336SVH6R3MCR	15.07	29	4x5.4
33	10	336SVH010MDR	12.06	35	5x5.4
33	16	336SVH016MDR	8.04	40	5x5.4
33	25	336SVH025MER	8.04	38	6.3x5.4
33	50	336SVH050MEL	7.03	60	6.3x7.7
33	100	336SVH100MFE	9.04	120	8x10.5
33	100	336SVH100MGE	9.04	150	10x10.5
33	160	336SVH160MTP	10.0477	95	12.5x13.5
33	200	336SVH200MTBW	10.0477	120	12.5x16
33	400	336SVH400MKQ	12.5596	85	16x16.5
47	6.3	476SVH6R3MDR	10.58	36	5x5.4
47	16	476SVH016MDR	5.6438	42	5x5.4
47	25	476SVH025MER	5.64	48	6.3x5.4
47	50	476SVH050MEL	4.94	63	6.3x7.7
47	63	476SVH063MFE	6.35	170	8x10.5
47	100	476SVH100MTP	6.3493	250	12.5x13.5
47	100	476SVH100MFE	6.35	170	8x10.5
47	100	476SVH100MGE	6.35	250	10x10.5
47	200	476SVH200MKQ	7.0547	220	16x16.5
47	250	476SVH250MKQ	7.0547	220	16x16.5
100	16	107SVH016MER	3.32	60	6.3x5.4
100	25	107SVH025MEL	2.6526	100	6.3x7.7
100	25	107SVH025MEL	2.65	100	6.3x7.7
100	35	107SVH035MEL	2.65	100	6.3x7.7
100	50	107SVH050MFE	2.82	230	8x10.5
100	63	107SVH063MGE	2.98	340	10x10.5
100	100	107SVH100MTP	2.98	300	12.5x13.5
100	160	107SVH160MKQ	3.3157	250	16x16.5
150	6.3	157SVH6R3MGE	3.32	86	6.3x5.4
150	25	157SVH025MEL	1.77	91	6.3x7.7
150	35	157SVH035MFE	1.55	260	8x10.5
150	50	157SVH050MGE	1.55	250	10x10.5
150	63	157SVH063MGE	1.99	360	10x10.5
220	6.3	227SVH6R3MER	2.261	80	6.3x5.4
220	10	227SVH010MEL	1.8086	120	6.3x7.7

SVH

+105°C, Long Life, 2000 hours

Capacitance (µF)	WVDC	IC PART NUMBER	Maximum ESR (Ω) 120 Hz, +20°C	Maximum RMS Ripple Current (mA) 120 Hz, +105°C	Dims DxL (mm)
220	16	227SVH016MEL	1.51	105	6.3x7.7
220	25	227SVH025MFE	1.21	240	8x10.5
220	35	227SVH035MFE	1.5071	170	8x10.5
220	50	227SVH050MGE	1.06	375	10x10.5
220	63	227SVH063MTP	1.3564	470	12.5x13.5
330	6.3	337SVH6R3MEL	1.507	140	6.3x7.7
330	25	337SVH025MFE	0.8	320	8x10.5
330	35	337SVH035MGE	0.7	410	10x10.5
330	50	337SVH050MTP	0.9043	490	12.5x13.5
330	50	337SVH050MTP	0.9043	490	12.5x13.5
330	63	337SVH063MKQ	0.7033	650	16x16.5
470	16	477SVH016MFE	0.71	240	8x10.5
470	25	477SVH025MGE	0.56	450	10x10.5
470	35	477SVH035MTP	0.78	520	12.5x13.5
470	50	477SVH050MTBW	0.5644	550	12.5x16
470	63	477SVH063MKQ	0.4938	700	16x16.5
680	6.3	687SVH6R3MFE	0.73	340	8x10.5
680	25	687SVH025MGE	0.39	490	10x10.5
680	35	687SVH035MTP	0.54	590	12.5x13.5
1000	10	108SVH010MGE	0.4	450	10x10.5
1000	25	108SVH025MTP	0.43	510	12.5x13.5
1000	35	108SVH035MKQ	0.36	800	16x16.5
1000	50	108SVH050MKQ	0.3	800	16x16.5
1500	6.3	158SVH6R3MGE	0.39	460	10x10.5
1500	25	158SVH025MTBW	0.29	590	12.5x16
1500	35	158SVH035MKQ	0.24	1000	16x16.5
2200	10	228SVH010MTP	0.23	680	12.5x13.5
2200	25	228SVH025MTP	0.2	900	16x16.5