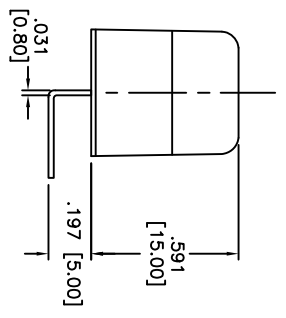
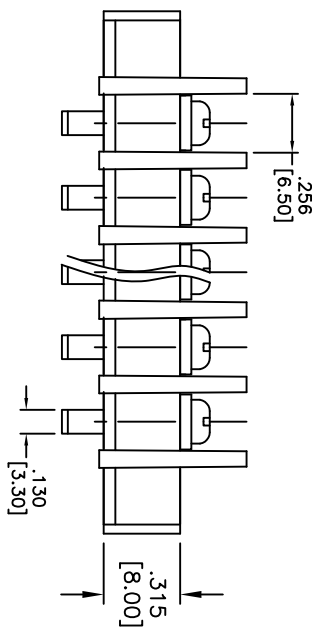
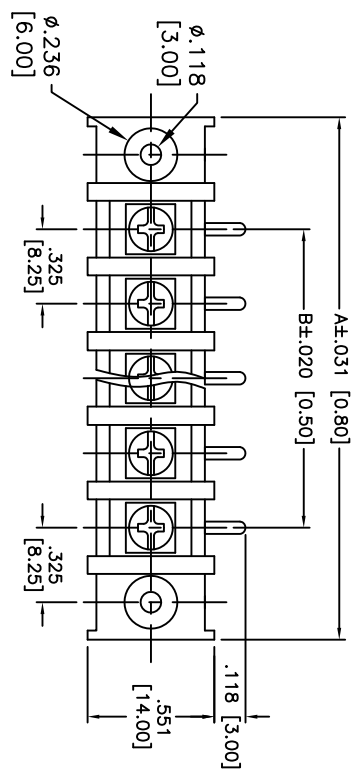


Rev	AWO #	Description	Date	Appr
-		RELEASED	6/8/05	
A		REDRAWN	3/12/14	AV/SY
B		REVISED DIM.	3/20/14	HR/QZL

APPROVED: _____
 DATE: _____ TITLE: _____



SPECIFICATIONS:
 Material: Insulator: Nylon66, rated UL 94V-0
 Insulator color: Black
 Contacts: Barss
 Screw: M3.0, Barss, Nickel plated
 Plating: Tin over Copper underplate overall
 Electrical: Operation voltage: 300 VAC
 Current rating: 15 Amps
 Mechanical: Wire Range: 12-22 Awg
 Screw Torque Value: 10kg-cm
 Insulation resistance: 500 Mohms min @ 500 VDC
 Dielectric withstanding voltage: 2000 VAC for 1 minute
 Temperature Rating: Operating temperature: -40°C to +105°C
 Environmental: Lead free, RoHS Compliant

Positions: 02 thru 32
 A = .325 [8.25] x No. of Positions + .720 [18.30]
 B = .325 [8.25] x No. of Spaces

UNLESS OTHERWISE SPECIFIED
 ALL DIMENSIONS ARE INCHES [MM]
 TOLERANCES: EXCEPT AS NOTED

INCHES	HOLE	DATE
.X ± .10	ØXX ± .10	
.XX ± .020	ØXXX ± .015	
.XXX ± .015	ØXXXX ± .010	

ADAM TECH
 909 Railway Avenue, Union, NJ 07083
 Phone: 908-687-5000 Fax: 908-687-5710

TITLE: .325 [8.25] CENTERLINE BARRIER BLOCK
 RIGHT ANGLE PCB TAILS, MOUNT ENDS

DRAWN	SS	6/8/05	SIZE	PART NO.	REV.
CHECKED			X	TBD-XX-03-M	A
APPROVED			REF:	S0003IT	

ROHS COMPLIANT