

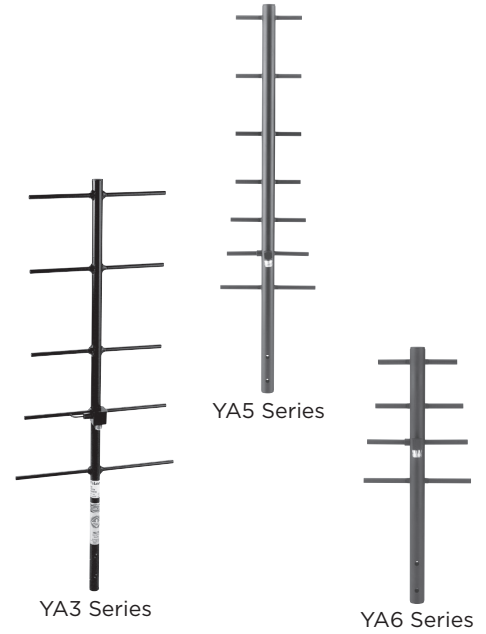
BASE STATION ANTENNAS

YAGIS

All Pulse/Larsen Yagis have the following specifications:

Construction: Fully Welded Elements **Wind Load:** 100 mph
VSWR: 2.0:1 **Feed Connection:** N Female
Power Rating: 300 Watts **Mounting Hardware:** Included

| Model | # of Elements | Frequency (MHz) | Gain (dBd/dBi) | Length (In) |
|----------|---------------|-----------------|----------------|-------------|
| YA3406WN | 5 | 406-430 | 9/11 | 42.25 |
| YA3450WN | 5 | 450-470 | 9/11 | 36.25 |
| YA5740W | 7 | 740-806 | 9/11 | 32.75 |
| YA6740W | 4 | 740-806 | 6/8 | 19.25 |
| YA5800W | 7 | 806-866 | 9/11 | 31.25 |
| YA6800W | 4 | 806-866 | 6/8 | 17.5 |
| YA5825W | 7 | 824-896 | 9/11 | 31.25 |
| YA6825 | 4 | 824-896 | 6/8 | 17.5 |
| YA5900W | 7 | 890-960 | 9/11 | 30 |
| YA6900W | 4 | 890-960 | 6/8 | 17.5 |



BASE STATION ANTENNAS

OMNI BASE STATION ANTENNAS

Omni Base Station part numbers ending in “WA” do not include mounting hardware. All others include the appropriate FB2BRACKET or FB3BRACKET for mounting. See Page 45 for FB brackets.

| Model | Type | Frequency (MHz) | Gain (dBd/dBi) | Max Height (In) | Power Rating (Watts) | Whip Color | Feed Connection |
|-------------|---------------------------------|-----------------|----------------|-----------------|----------------------|------------|-----------------|
| BSA45C | Base Loaded 1/4 λ | 45-50 | 0/2 | 51.75 | 200 | Stainless | N Female |
| BSA118B | 5/8 λ | 118-121 | 3/5.2 | 64 | 200 | Black | UHF Female |
| BSA132B | 5/8 λ | 131-135 | 3/5.2 | 54.5 | 200 | Black | UHF Female |
| BSA150B | 5/8 λ | 144-174 | 3/5.2 | 51.75 | 200 | Black | UHF Female |
| BSA150C | 5/8 λ | 144-174 | 3/2.5 | 51.75 | 200 | Black | UHF Female |
| BSA220C | 5/8 λ | 200-225 | 3/5.2 | 33.75 | 200 | Stainless | UHF Female |
| BSA406C | 5/8 over 1/2 λ | 406-420 | 3.5/5.6 | 32 | 200 | Stainless | UHF Female |
| BSA440C | 5/8 over 1/2 λ | 440-460 | 3.5/5.6 | 32 | 200 | Stainless | UHF Female |
| BSA450C | 5/8 over 1/2 λ | 450-470 | 3.5/5.6 | 32 | 200 | Stainless | UHF Female |
| BSAKIT | Base Station Ground Plane Kit | | | | 200 | | UHF Female |
| FB1136 | 5/8 over 1/2 λ | 136-230 | 3.5/5.6 | 96 | 200 | Stainless | UHF Female |
| FB2406 | 5/8 over 1/4 λ | 406-420 | 3.2/5.4 | 32.5 | 200 | Black | N Female |
| FB2450 | 5/8 over 1/4 λ | 450-470 | 3.2/5.4 | 32.5 | 200 | Black | N Female |
| FB2406W/A | 5/8 over 1/4 λ | 406-420 | 3.2/5.4 | 32.25 | 200 | Black | N Female |
| FB2420W/A | 5/8 over 1/4 λ | 420-440 | 3.2/5.4 | 32.25 | 200 | Black | N Female |
| FB2450W/A | 5/8 over 1/4 λ | 450-470 | 3.2/5.4 | 32.25 | 200 | Black | N Female |
| FB3800 | 5/8 over 1/4 λ | 806-866 | 3.2/5.4 | 16 | 150 | Black | N Female |
| FB3825 | 5/8 over 1/4 λ | 824-896 | 3.2/5.4 | 16 | 150 | Black | N Female |
| FB3740WA | 5/8 over 1/4 λ | 740-806 | 3.2/5.4 | 16 | 150 | Black | N Female |
| FB3800WA | 5/8 over 1/4 λ | 806-866 | 3.2/5.4 | 16 | 150 | Black | N Female |
| FB3825WA | 5/8 over 1/4 λ | 824-896 | 3.2/5.4 | 16 | 150 | Black | N Female |
| FB35T800 | 5/8 over 5/8 over 1/4 λ | 806-866 | 3.2/5.4 | 32 | 150 | Black | N Female |
| FB35T825 | 5/8 over 5/8 over 1/4 λ | 824-896 | 3.2/5.4 | 32 | 150 | Black | N Female |
| FB35T800WA | 5/8 over 5/8 over 1/4 λ | 806-866 | 5/7.2 | 32 | 150 | Black | N Female |
| FB35T825WA | 5/8 over 5/8 over 1/4 λ | 824-896 | 5/7.2 | 32 | 150 | Black | N Female |
| FB900 | 5/8 over 1/4 λ | 890-960 | 3.2/5.4 | 16 | 150 | Black | N Female |
| FB3900WA | 5/8 over 1/4 λ | 890-960 | 3.2/5.4 | 16 | 150 | Black | N Female |
| FB35T900 | 5/8 over 5/8 over 1/4 λ | 890-960 | 5/7.2 | 23 | 150 | Black | N Female |
| FB35T900WA | 5/8 over 5/8 over 1/4 λ | 890-960 | 5/7.2 | 23 | 150 | Black | N Female |
| FB45T2400 | 5/8 over 5/8 over 1/4 λ | 2400-2485 | 5/7.2 | 16.5 | 100 | Black | N Female |
| FB45T2400WA | 5/8 over 5/8 over 1/4 λ | 2400-2485 | 5/7.2 | 9 | 100 | Black | N Female |

