

**NOTES:**

**ELECTRICAL:**

1. VOLTAGE RATING : 150 VAC RMS.
2. CURRENT RATING : 1.5 AMP.
3. CONTACT RESISTANCE : 20 MILLIOHMS MAX.
4. INSULATION RESISTANCE: 1000 MEGOHMS MIN @ 500 VDC.
5. DIELECTRIC STRENGTH : 1000 VAC RMS 60Hz, 1MIN.

**MECHANICAL:**

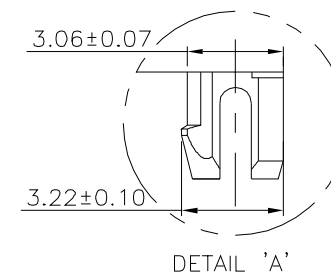
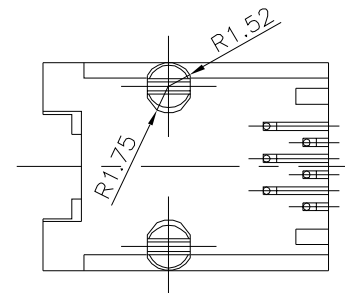
1. HOUSING MATERIAL : PBT GLASS FILLED POLYESTER UL94V-0. COLOR GRAY
2. CONTACT MATERIAL : PHOSPHOR BRONZE  $\phi$ 0.46mm.
3. PLATING : GOLD PLATING OVER NICKEL.
4. OPERATING LIFE : 750 CYCLES MIN.
5. PCB RETENTION PRE-SOLDER : 1 LB MIN.
6. PCB RETENTION POST-SOLDER: 10 LBS MIN.

**ENVIRONMENTAL:**

1. STORAGE TEMPERATURE : -40°C TO +85°C.
2. OPERATION TEMPERATURE: -40°C TO +85°C.
3. WAVE SOLDERING TEMPERATURE: 230-250°C(3-5 SECONDS).
4. RoHS COMPLIANT.

MATES WITH MODULAR PLUG CONFORMING TO FCC PART 68, SUBPART F.

PART NUMBER	CONTACT	COLOR	GOLD PLATING
E5362-300NG2-L	2	GRAY	6u"
E5364-300NG2-L	4	GRAY	6u"
E5366-300NG2-L	6	GRAY	6u"



8

7

6

5

4

3

2

1

DETACHED LISTS	MM (INCH)	<b>RoHS Compliant</b>				
	TOLERANCES EXCEPT AS NOTED		TITLE			
	MM	±	11.5mm SIDE PCB JACK 6P			
.0 ± 0.2	±					
.00 ± 0.15	±					
.000 ± 0.075	±					
ANGLES ± 0.5		DFTO Cothy		DRAWING NO. CE533A42-LC		
		DATE 08/21/2006		/PART NO. SEE TABLE		
THIRD ANGLE PROJECTION		SCALE : 3:1		DO NOT SCALE DRAWING		
				SIZE	REV	
				A3	O	
				SHEET 1	OF 1	

H  
G  
F  
E  
D  
C  
B  
A